



---

## **Committee on Conservation & State Lands**

**Tuesday, October 2, 2007**

**1:00 PM–4:00 PM**

**216 Capitol**

# **REVISED**

# Committee Meeting Notice

## HOUSE OF REPRESENTATIVES

Speaker Marco Rubio

### Committee on Conservation & State Lands

**Start Date and Time:** Tuesday, October 02, 2007 01:00 pm

**End Date and Time:** Tuesday, October 02, 2007 04:00 pm

**Location:** 216 Capitol

**Duration:** 3.00 hrs

Presentation by:

Department of Environmental Protection on land management activities by Division of State Lands.

Update on Interim Project Report Land Acquisition, Capital Projects, and Long-term Land Management

Discussion of possible topics for upcoming committee meetings.

**NOTICE FINALIZED on 09/25/2007 16:17 by SIMS-DAVIS.LINDA**



# The Florida House of Representatives

Environment & Natural Resources Council

Committee on Conservation & State Lands

Marco Rubio  
Speaker

Will Kendrick  
Chair

## AGENDA

Tuesday, October 02, 2007  
1:00 P.M., Room 216 Capitol

1. Call to Order

2. Opening remarks by Chair

3. Introduction/Welcome:

Representative Robert Schenck

4. Presentation by:

Department of Environmental Protection, Division of State Lands

Deborah Poppell, Acting Director - Division of State Lands

Bill Torres, Bureau Chief - Bureau of Invasive Plant Management

Mike Bullock, Director - Division of Recreation and Parks

Jim Wood, Assistant Director - Office of Greenways & Trails

Ellen McCarron, Assistant Director - Office of Coastal/Aquatic Managed Areas

5. Interim Project Update

Land Acquisitions, Capitol Projects and Long-term Land Management

Leonard C. Zeiler, Staff Director

Steven L. Palmer, Senior Legislative Analyst

Larry Novey, Chief Legislative Analyst for OPPAGA

6. Topics/Issues for up-coming meetings

7. Adjournment

# COMMITTEE ON CONSERVATION & STATE LANDS



REP. WILL KENDRICK  
COMMITTEE CHAIR



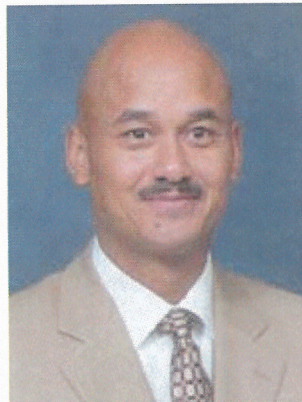
REP. FAYE CULP  
COMMITTEE VICE-CHAIR



REP. RICHARD MACHEK  
RANKING DEMOCRATIC MEMBER



REP. MARY BRANDENBURG



REP. CHARLES CHESTNUT



REP. RENE GARCIA



REP. DOUG HOLDER

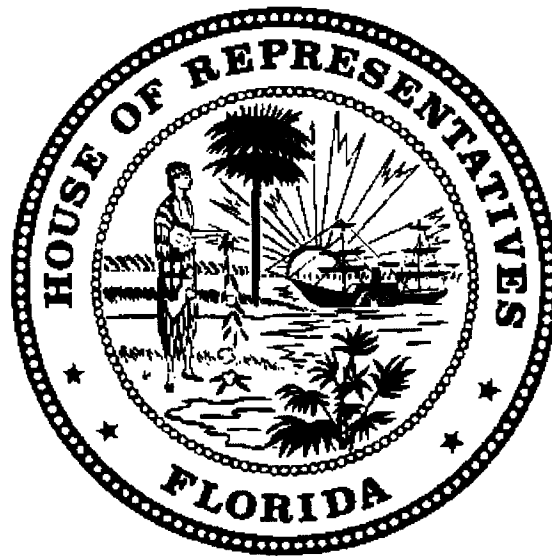


REP. ROBERT SCHENCK



REP WILL WEATHERFORD





# **ADDENDUM A**

---

## **Committee on Conservation & State Lands**

**Tuesday, October 2, 2007  
1:00 PM –4:00 PM  
216 Capitol**

# Committee Meeting Notice

## HOUSE OF REPRESENTATIVES

**Speaker Marco Rubio**

### Committee on Conservation & State Lands

**Start Date and Time:** Tuesday, October 02, 2007 01:00 pm

**End Date and Time:** Tuesday, October 02, 2007 04:00 pm

**Location:** 216 Capitol

**Duration:** 3.00 hrs

Presentation by:

Department of Environmental Protection on land management activities by Division of State Lands.

Update on Interim Project Report Land Acquisition, Capital Projects, and Long-term Land Management

Discussion of possible topics for upcoming committee meetings.

**NOTICE FINALIZED on 09/25/2007 16:17 by SIMS-DAVIS.LINDA**

# State Land Management



Division of State Lands  
Division of Recreation & Parks  
Office of Greenways & Trails  
Division of Coastal & Aquatic Managed Areas

---

---

---

---

---

---

---

---

## Division of State Lands

- o Land Acquisition
- o Land Administration
- o Land Management Oversight
- o Land Management Assistance



---

---

---

---

---

---

---

---

## Land Acquisition

(Do we consider management cost up front?)

- o P2000 and Florida Forever both set aside management money for overall program
- o Individual projects:
  - Management Prospectus & Policy Statement during ARC evaluation
  - Prospectus summary & policy statement included in ARC reports to Board of Trustees (Feb. & Aug.)
  - Board of Trustees review prospectus & policy statement during initial acquisition of land within each project



---

---

---

---

---

---

---

---

## Conservation Easement Ownerships

Source: Florida Natural Areas Inventory - March 2007

Government Entity	Acres Restricted
<b>State Board of Trustees</b>	<b>150,146</b>
Northwest Florida WMD	6,204
Suwannee River WMD	113,520
St. Johns River WMD	104,818
Southwest Florida WMD	69,117
South Florida WMD	20,529
Local Government	3,258
Federal Government	3,026
<b>Total</b>	<b>470,618</b>




---

---

---

---

---

---

---

---

---

---

## Easement Monitoring *(as of 9/07)*

- 158,804 acres under 107 different easements
- 92,803 acres under 101 easements monitored by Division of State Lands using 4 consultants
  - Total cost \$354,730 (FYs 04-07)
  - 87 sites monitored more than once
  - 3 sites yet to be monitored (*newly acquired*)
  - 99% compliance with easement terms - owners very enthusiastic & supportive, including new owners
- 6 monitored by other entities:
  - 3 by St. Johns River Water Management District
  - 1 by Fla. Fish & Wildlife Conservation Comm.
  - 1 by DEP's Bureau of Mine Reclamation
  - 1 by U.S. National Park Service




---

---

---

---

---

---

---

---

---

---

## Management Plan Reviewed by Acquisition & Restoration Council

- Plans for areas > 160 acres reviewed every 10 years
- Plans prepared pursuant to rule 18-2.021, F.A.C.
- Council Members:
  - Secretary, Department of Environmental Protection
  - Director, Div. Forestry, Dept. Agriculture & Consumer Services
  - Executive Director, Fish & Wildlife Conservation Commission
  - Director, Div. Historical Resources, Department of State
  - Secretary, Department of Community Affairs
  - 4 Governor appointees from scientific disciplines related to land, water or environmental sciences (4-year terms)




---

---

---

---

---

---

---

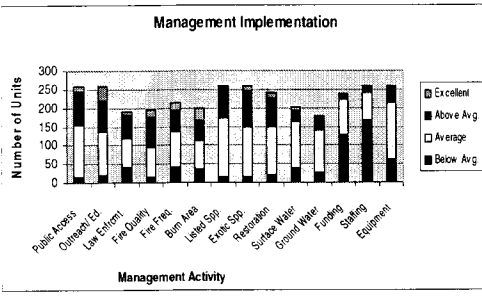
---

---

---



### How Are We Doing?




---

---

---

---

---

---

---

---

### Land Management Funding Assistance

- **CARL management funding**
  - ⦿ Interim management funds
  - ⦿ Long-term management funds
- **Invasive Plant Management**
  - ⦿ Upland invasive species
  - ⦿ Aquatic plant control




---

---

---

---

---

---

---

---

### Interim Management Funding (1)

- Memorandum of Agreement – Feb. 1993
- \$4.5 million appropriated annually from Conservation & Recreation Lands (CARL)
- Primary purpose = start-up funds to open newly acquired areas for immediate public use
- Funds distributed to managers at time of acquisition closing on new property




---

---

---

---

---

---

---

---

## Land Management Uniform Cost-Accounting Council

- Established in 2001 (*s. 259.037, F.S.*)
- Members:
  - ✦ Dept. Environ. Protection's Divs. State Lands and Recreation & Parks, and Offices Greenways & Trails and Coastal & Aquatic Managed Areas
  - ✦ Div. Forestry (Dept. Ag. & Consumer Services)
  - ✦ Fish & Wildlife Conservation Commission
  - ✦ Div. of Historic Resources (Dept. State)
- Rotating chair & 1 vote per state agency
- Purpose: To establish uniform cost-accounting categories across state agencies that manage conservation lands




---

---

---

---

---

---

---

---

## Land Management Costs (FY 05-06)

Agency	Units	Acres Managed	Total Costs
DRP	159	724,629	\$85,236,533
CAMA	3	55,949	\$3,839,515
OGT	9	86,964	\$10,376,194
DOF	33	1,001,668	\$30,240,662
FWCC	40	1,346,391	\$49,242,169
DHR	n/a	n/a	\$7,733,179
DSL	n/a	n/a	\$9,586,876
<b>Totals</b>	<b>244</b>	<b>3,215,601</b>	<b>\$196,255,130</b>

Source: Land Management Uniform Cost-Accounting Council 2006 Annual Report




---

---

---

---

---

---

---

---

## Land Management Funding Categories

- **Resource Management**
  - ✦ Exotic species management
  - ✦ Prescribed burning
  - ✦ Cultural resources (*archaeological & historic*)
  - ✦ Timber management
  - ✦ Hydrological management
  - ✦ Other resource management activities (*natural communities restoration, species surveys, monitoring & research, endangered & threatened species management*)
- **Administration**
  - ✦ Central & district office general administration – budgets, personnel, purchasing, records keeping, supervisory
  - ✦ Units/Projects general administration, utilities, basic services...




---

---

---

---

---

---

---

---

## Land Management Funds (FY 05-06)

Source: Land Management Uniform Cost Accounting Council 2006 Annual Report

Agency	CARL Funds	Other Funds	%CARL
DRP	\$21,381,032	\$63,855,501	25%
CAMA	\$1,138,286	\$2,701,229	30%
OGT	\$2,215,571	\$8,160,623	21%
DOF	\$20,294,381	\$9,946,281	67%
FWCC	\$16,291,383	\$32,950,786	33%
<b>Totals</b>	<b>\$61,320,653</b>	<b>\$117,614,421</b>	<b>34%</b>




---

---

---

---

---

---

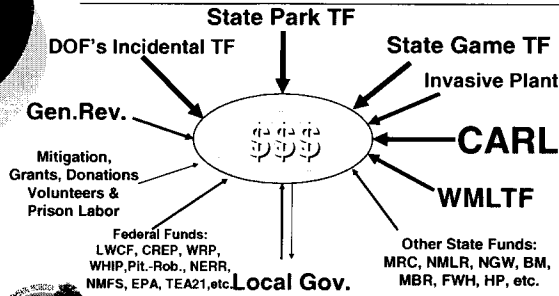
---

---

---

---

## Management Funding




---

---

---

---

---

---

---

---

---

---



The Department of Environmental Protection is designated by the Florida Legislature as the lead agency for...

Coordinating and funding two statewide programs controlling invasive aquatic and upland plants in waterways and on public conservation lands




---

---

---

---

---

---

---

---

---

---

### ***Public Water Bodies***

- Sovereignty lands
- Public ramps
- 455 lakes and rivers
- 1.26 million acres
- 350 active management programs
- \$29 million spent annually



---

---

---

---

---

---

---

---

### ***Funding Priorities***

- Floating plants (hyacinth/lettuce)
- New hydrilla infestations
- Plants blocking access & navigation
- Open areas in dense hydrilla mats
- Large-scale hydrilla control
- Control other noxious plants
- Residential canals

---

---

---

---

---

---

---

---

### ***Floating Plant Problems***



***Water lettuce & Water hyacinth***  
Flood control  
Navigation  
Recreation  
Environmental



---

---

---

---

---

---

---

---

### ***Environmental Control***



---

---

---

---

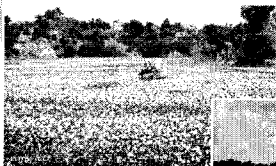
---

---

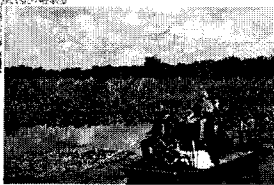
---

---

### ***Maintenance Control***



Crisis management



Treating small infestations

---

---

---

---

---

---

---

---

### ***Centralize / Standardize***

- **Statewide goals and plans**
- **Statewide priority fund distribution**
- **Reduce administration**
- **Coordinate operations**
- **Avoid duplication / neglect**
- **Ensure consistency**
  - ◊ **Policy, goals, administration, methods**

---

---

---

---

---

---

---

---

**Florida's Upland Invasive Plant Management Program**



Australian melaleuca trees, Everglades

---

---

---

---

---

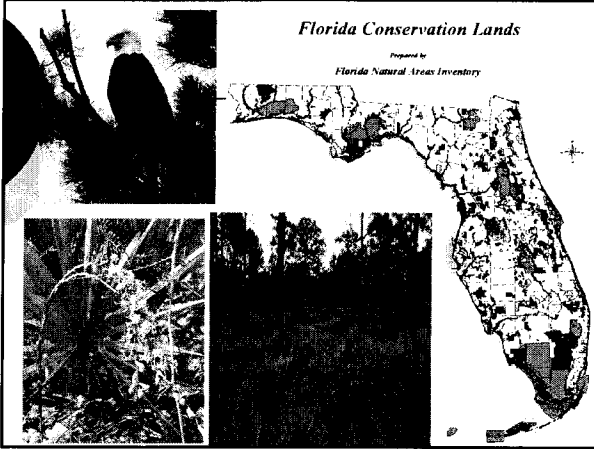
---

---

---

**Florida Conservation Lands**

*Prepared by  
Florida Natural Areas Inventory*



---

---

---

---

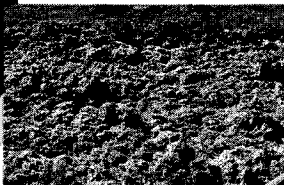
---

---

---

---

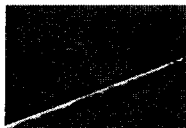
**Problems**



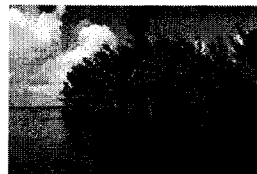
Old World climbing fern



Kudzu



Brazilian pepper forest



Australian pines

---

---

---

---

---

---

---

---

## Management Strategies:

### Regional Working Groups

#### BIPM PROJECT FUNDING CRITERIA

- Cost-share/matching funds available
- Target species with high invasiveness
- Current control technologies available
- Benefit listed (T&E) species
- Perpetual site management

---

---

---

---

---

---

---

---

## 10-Year Program Results

### **MELALEUCA**



- > \$2 million dedicated annual funding (minimum) since 1992
- > 1997 – 2007 165,000 acres of trees controlled (70% of total acres)

### **BRAZILIAN PEPPER**

700,000 acres South Florida public lands 2005

1997 – 2007 56,000 AC controlled (25% of total acres)



---

---

---

---

---

---

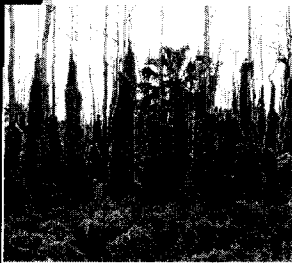
---

---

## 10-Year Program Results

### **CLIMBING FERNS**

(*Lygodium* species)



- > 250,000 acres pre-'04 hurricanes
- > Airborne spores spread statewide
- > 1997-2007 20,000 acres controlled (8.5% of total acres)
- > BIPM started 'Strike Team' 2004



---

---

---

---

---

---

---

---





## Resource Management

- **Prescribed Burning**
  - 268,000 Acres of Fire Dependent Land
  - Partnered with Other Agencies such as DOF, TNC
  - 1 Million Acres Burned To-Date
- **Invasive Exotic Plant Removal**
  - FY 06/07 Over 4,000 Acres
- **Sea Oats Restoration**
  - FY 05/06 Over 3.7 Million Planted
- **Springs Protection**
  - Protecting Minimum Flow Levels at 10 First Magnitude Springs
- **Managing Historic and Cultural Sites**
  - 350 Historic Sites Maintained
  - 147 Parks have Archeological Sites




---

---

---

---

---

---

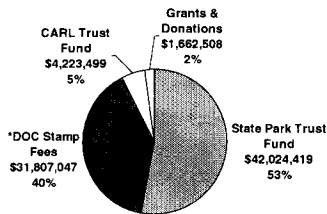
---

---

---

---

## Operating Budget FY 07/08 \$79,717,473



*\*A portion of Documentary Stamp Taxes in the Land Acquisition Trust Fund are transferred into the State Park Trust Fund each fiscal year.*




---

---

---

---

---

---

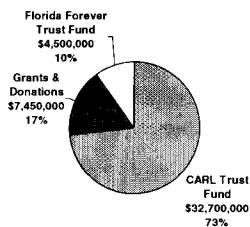
---

---

---

---

## Fixed Capital Outlay Budget FY 07/08 \$44,650,000




---

---

---

---

---

---

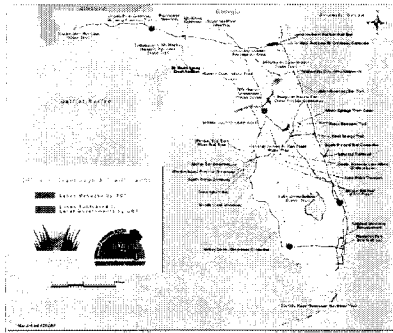
---

---

---

---

## Greenways & Trails



---

---

---

---

---

---

---

---

## Greenways & Trails Management

### 86,992 Total Acres

- o 11 Managed Properties (83,841 acres)
- o 27 Subleased Properties (3,151 acres)
  - 23,377 Acres (27%) -- Receives CARL Long Term Management Funding
  - 63,615 Acres (73%) - Does **Not** Receive CARL Funding

---

---

---

---

---

---

---

---

## Positions Breakdown

- o 41 Total FTEs
- o 27 Land Management FTEs
  - o 4 Administration and Support
  - o 4 Field Management
  - o 18 Field Staff
  - o 1 Construction Projects Management

---

---

---

---

---

---

---

---

## Partners & Volunteers

- Volunteers
- Local Governments
- State and Federal Agencies
- Non-Profit Organizations
- Developers
- Visit Florida and Local Tourism Organizations



---

---

---

---

---

---

---

---

## Innovative Efficiencies

- Volunteers
- Multi-disciplinary Training for Staff
- Private Donations of Land and Dollars
- Lease of Private Lands
- Private Lands Designation for Trail
- Law Enforcement Residences on OGT Managed Lands
- Inmate Labor
- Sheriff's Work Farm
- Local Government Management and Development of OGT Acquired Lands
- Department of Transportation (Federal Funding)



---

---

---

---

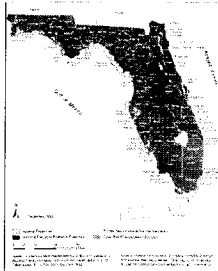
---

---

---

---

## Coastal & Aquatic Managed Areas



---

---

---

---

---

---

---

---

## Services to the Public

- o Outdoor recreation – hiking, biking, horseback riding, hunting, nature observation, picnicking, primitive camping
- o Coastal access – boating, fishing, beach activities
- o Education and outreach – formal educational programs, interpretative displays, technical training and workshops
- o Resource management – natural and cultural resource protection and restoration to provide a quality environment for public use
- o None of these services are provided by private contracts, however, contractors contribute to their completion. For example, contractors maintain fire lanes, perform major exotic plant removal projects, and maintain and construct facilities and infrastructure.
- o **In FY 06-07 CAMA had 439,944 visitors, and provided 2,467 outreach events.**




---

---

---

---

---

---

---

---

## Partners and Volunteers

- o **Activities include:**
  - o interagency fire fighting teams
  - o control of exotic species
  - o restoration of habitats and watersheds
  - o environmental education programs
  - o management of protected species
  - o research
  - o monitoring
- o **Major partners include:**
  - o Florida Park Service
  - o Fish and Wildlife Conservation Commission
  - o Division of Forestry
  - o Division of Historical Resources
  - o Water Management Districts
  - o Universities
  - o Florida Natural Areas Inventory
  - o National Oceanic and Atmospheric Administration
  - o National Estuary Programs
  - o U.S Fish and Wildlife Service
  - o National Forestry Service
  - o local governments
  - o community-based organizations

40,761 volunteer hours (~\$400K value, 20 FTE equivalent) in FY 06-07

CSO established in each managed upland site




---

---

---

---

---

---

---

---

## How do we stretch our dollars and increase our efficiency?

- o pursue grant funding (29% of land management costs in FY 06-07)
- o regional fire management teams with the Florida Park Service, Division of Forestry, U.S. Fish and Wildlife Service and the U.S. Department of Agriculture.
- o Engage in cooperative monitoring efforts – shorebirds, protected species, water quality, invasive species
- o work closely with local governments on education and outreach programs.
- o share facilities and other resources with state universities when possible.
- o rely on the expertise of the Division of Forestry on the management of forestry resources on its lands.
- o cooperate closely with Bureau of Invasive Plants in control, survey and project management
- o use volunteers extensively for resource management, construction, maintenance and outreach.




---

---

---

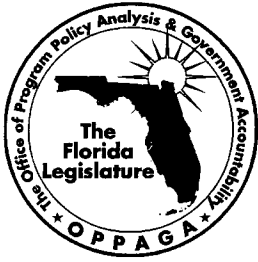
---

---

---

---

---



The Florida Legislature  
Office of Program Policy Analysis & Government Accountability

## Survey of Participants in Land Management Reviews

The Florida Legislature's Office of Program Policy Analysis and Government Accountability (OPPAGA) in support of the Joint Legislative Sunset Committee is conducting research on land management reviews coordinated by the Florida Department of Environmental Protection (DEP) as required by s. 373.591(5), *F.S.*, or s. 259.036(6), *F.S.* The purpose of the research is to examine the process and outcomes of the reviews and offer recommendations for improvement.

We are asking that you answer the questions below on the land management review process. We will not report information in a manner that will identify individual respondents.

As an alternative to completing the survey online, you may fax your completed survey to (850) 487-9213. Thank you for your assistance. If you have any questions regarding this survey or our project, please contact Larry Novey at (850) 487-3768 or [novey.larry@oppaga.fl.gov](mailto:novey.larry@oppaga.fl.gov), or Claire Mazur at (850) 487-9211 or [mazur.claire@oppaga.fl.gov](mailto:mazur.claire@oppaga.fl.gov), or at (800) 531-2477.

---

### 1. Please indicate your role in the land management review process.

- Representative of the county or local community in which the parcel or project is located
- Representative of the Department of Environmental Protection, Division of Recreation and Parks
- Representative of the Department of Agriculture and Consumer Services, Division of Forestry
- Representative of the Fish and Wildlife Conservation Commission
- Representative of the Department of Environmental Protection's district office in which the parcel is located
- Employee of a water management district
- Employee from Department of Environmental Protection
- Private land manager
- Member of the local soil and water conservation district
- Member of a conservation organization
- Manager of the public lands subject to review
- Other (please specify) \_\_\_\_\_

2. How many land management reviews did you participate in during the period from July 2004 through June 2007? \_\_\_\_\_

3. For the reviews that you participated in, were all required participants present?

Yes.

No. If no, what was the effect on the review process?

4. If you participated in more than one review, do you feel that the process was consistent between the reviews?

Yes.

No. If no, please explain your response.

5. What training or information did DEP provide to explain the land management review process and prepare you for your participation in the review(s)? Please check all that apply.

Information that explained the management review process

Land management plan

Florida Natural Areas Inventory (FNAI) data

Maps or other property information

Other \_\_\_\_\_

No training or property information was provided



6. Is there any other information that DEP could have provided that would have helped you understand the land management review process?

Yes. If yes, please explain your response.

No.

7. Is there any other information that DEP could have been provided that would have helped you understand the condition of the specific property(ies) that you reviewed?

Yes. If yes, what additional information could have been provided?

No.

8. In general, was there sufficient time allowed for conducting the land management review(s)?

Yes.

No.

Please explain your response.

9. Was land management funding considered in the land management review(s)?

Yes.

No.

Please explain your response.

--	--

10. Does the current land management review process allow for free and open discussion of the property and land manager being reviewed?

Yes.

No.

Please explain your response.

--	--

**11. Does the composition of land management review teams provide professional expertise and perspective to the process?**

Yes.

No. **If no, why not?**

**Do you have any suggestions for changing the composition of the teams?**

**12. Do you feel the current land management review process allows you to evaluate how well the management plan was implemented?**

Yes.

No.

**Please explain your response.**

13. Based on your experience with land management reviews, does the current review process allow for an adequate evaluation of the extent to which land management plans and managers provide the services described below? (Please provide a response for each management service listed.)

	Yes	No	Don't have knowledge to make an evaluation	Comments
a. protection of threatened or endangered species	<input type="checkbox"/>	<input type="checkbox"/>	<input type="checkbox"/>	
b. protection of unique or important natural or physical features	<input type="checkbox"/>	<input type="checkbox"/>	<input type="checkbox"/>	
c. protection of geological functions	<input type="checkbox"/>	<input type="checkbox"/>	<input type="checkbox"/>	
d. protection of hydrological functions	<input type="checkbox"/>	<input type="checkbox"/>	<input type="checkbox"/>	
e. protection of archaeological features	<input type="checkbox"/>	<input type="checkbox"/>	<input type="checkbox"/>	
f. areas for recreation compatible with conservation purposes	<input type="checkbox"/>	<input type="checkbox"/>	<input type="checkbox"/>	
g. public access	<input type="checkbox"/>	<input type="checkbox"/>	<input type="checkbox"/>	
h. timber resource management	<input type="checkbox"/>	<input type="checkbox"/>	<input type="checkbox"/>	
i. management of land for the purposes for which it was acquired	<input type="checkbox"/>	<input type="checkbox"/>	<input type="checkbox"/>	

**14. How useful do you feel the land management reviews are to the various stakeholders who receive the management review reports?**

- Very useful
- Somewhat useful
- Not very useful
- Not at all useful
- Don't know

**Please comment on your response.**

--

**If you are NOT the manager of the property(ies) reviewed, please go to question 16.**

**15. If you are the manager of the property(ies) reviewed, how useful do you feel the land management review(s) are to you in planning and managing your property?**

- Very useful
- Somewhat useful
- Not very useful
- Not at all useful
- Don't know

**Please comment on your response.**

--

**16. Do you have any other comments, concerns, or suggestions that you would like to share regarding the land management review process or any suggestions as to how to improve land management reviews?**


---

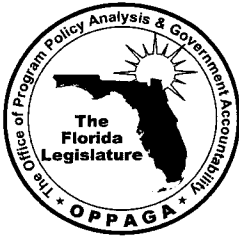
**Contact Information**

Name of person completing survey	<input type="text"/>
Title	<input type="text"/>
Email address	<input type="text"/>
Phone number	<input type="text"/>

**Thank you for taking the time to give us your opinions regarding the land management review process.**

**Please click "Submit Survey" below to submit your survey. If you want a copy of your responses, please print this survey with your responses before you submit it.**

<a href="#">Submit Survey</a>
-------------------------------



The Florida Legislature  
Office of Program Policy Analysis & Government Accountability

## State Agency Conservation Land Management Practices

The Florida Legislature's Office of Program Policy Analysis and Government Accountability (OPPAGA) is conducting research on state agencies' conservation land management practices as part of our support to the Joint Legislative Sunset Committee. The purpose of the research is to examine the process and outcomes related to these practices and to offer recommendations for improvement.

Accordingly, we request that you provide the information below. Please complete and return the information request via e-mail to Larry Novey at [novey.larry@oppaga.fl.gov](mailto:novey.larry@oppaga.fl.gov) by **August 10, 2007**. Thank you for your assistance. If you have any questions, please contact Larry Novey at (850) 487-3768 or Claire Mazur at (850) 487-9211 or (800) 531-2477.

---

### Land Management Planning and Coordination of Activities

1. What are your agency's overall land management goals (i.e., guiding principles regarding public access, groundwater protection, timber management, reforestation, etc.)?

2. How does your agency balance goals related to *conservation of natural resources* with objectives related to *public use* of lands?

3. How do your agency's land management goals relate to the use of land management funds? For example, if public access is a major goal, are funds primarily used to increase access? If no, why not?

4. What are your agency's **major land management** activities? How do you prioritize these activities?

5. How is your agency involved in making land management decisions about projects or parcels prior to their acquisition by the state?

6. What are your primary land management concerns prior to land acquisition?



7. How are primary and secondary/cooperating land managers selected?

8. How do the roles and responsibilities of primary and secondary/cooperating land managers differ?

9. Please use the table below to provide the number of acres you managed as a lead manager for the last three fiscal years.

<b>Total Number of Acres You Managed as Primary Land Manager in Fiscal Years 2004-05, 2005-06, 2006-07</b>			
<b>Fiscal Year</b>	<b>2004-05</b>	<b>2005-06</b>	<b>2006-07</b>
<b>Number of Acres</b>	<input type="text"/>	<input type="text"/>	<input type="text"/>

10. Please answer the following questions about land management activities on lands you own and/or are the primary manager.

a. What land management activities are conducted by other public entities? Why are these activities conducted by these entities? Please list activities and entities.

b. What monitoring or accountability mechanisms does your agency use to help ensure that these activities are performed efficiently and effectively?

11. Please answer the following questions about land management plans.

a. What process does your agency follow in developing its land management plans?

b. What entities are involved in developing the plans?

c. Once a management plan is implemented what steps are taken to ensure that management activities comply with the plan?

d. What measures are in place to gauge progress toward accomplishing the goals and objectives outlined in land management plans?

12. How does your agency coordinate land management activities with other entities (federal, state, and local governments; private entities) in the areas listed below? Please give specific examples of coordination activities and the frequency with which they occur.

**Coordination Activities and Frequency**

a. Prescribed burning and other fire related issues

b. Hydrologic restoration -- activities

c. Invasive plant management -- activities

d. Other (please specify)

13. Are there opportunities for increasing the coordination of activities identified in Question 10?

Yes. If Yes, please describe the opportunities.

No.

14. Are there any impediments to interagency coordination?

Yes. If Yes, please describe the impediments and how they can be addressed.

No.

---

**Staffing, Funding, and Contracting**

15. How does your agency allocate staff and funding for land management activities on *public* lands?

16. Are any land management activities on public lands that you manage performed by private, contracted entities?

Yes. If Yes, please describe the contracted activities and explain why your agency decided to contract for them.

What monitoring or accountability mechanisms does your agency use to help ensure that these activities are performed efficiently and effectively.

No.

17. Please use the table below to provide the total dollar amount expended for land management activities. Please provide the total amount and source (e.g., General Revenue, CARL Trust Fund, etc.).

**Expenditures for land management activities conducted on public lands**

Land management services provided by:	Fiscal Year 2004-05		Fiscal Year 2005-06		Fiscal Year 2006-07	
	Amount	Source	Amount	Source	Amount	Source
Your agency as a lead manager						
Your agency as a secondary/cooperating manager						
Other entities						
<b>Total land management expenditures</b>						

18. Please use the table below to provide the total number of FTEs assigned to land management activities.

**Expenditures for land management activities conducted on public lands**

	Fiscal Year 2004-05	Fiscal Year 2005-06	Fiscal Year 2006-07
<b>Total number of land management FTEs</b>			

19. Are any of your agency's lands solely managed by contracted entities?

Yes. If Yes, please indicate how many parcels and how many acres are managed by contracted entities.

No.

20. Please answer the following questions about land management activities performed by volunteers.

a. What land management activities (including visitor services) are conducted by volunteers?

b. How do you ensure the quality of services provided by volunteers (e.g., ensure the accuracy of species inventories, quality of educational programs)?

c. How many hours of land management activities were conducted by volunteers during the last three fiscal years?

d. Please provide any other comments you may have regarding the use of volunteers to perform land management activities.

---

## Public Access for Recreational Activities

21. What is your decision-making process for determining the types and amounts of recreational activities allowed on the land managed by your agency?

22. Does the presence of law enforcement affect the amount and type of recreational activities allowed on your lands?

Yes. If Yes, how?

No.

23. Please answer the following questions about public access to your lands.

a. How many acres and what percentage of your total land is closed for public access?

Acres       %

b. For what reasons does your agency not allow access to certain lands?

c. How does your agency determine the number of designated access points to its lands?

d. When there are competing interests by users, how does your agency determine what activities will be allowed?

e. How does your agency inform the public as to what activities are allowed on state lands?

24. What public access issues affect your agency and how are they being addressed?

25. When the state purchases private lands, how does public access change when your agency assumes management (e.g., opening land to hunting or other activities, prohibiting vehicles, etc.)?

26. How does your agency inform the public concerning changes in access?

27. What concerns do you receive from the public regarding access to public lands?

How is this information used?

---

## Land Management Outcomes

28. What qualitative and quantitative information do you use to assess the condition of lands managed by your agency?

29. Does your agency have performance measures for its land management activities?

- Yes. If Yes, please provide measures and performance data for each measure for Fiscal Years 2004-05, 2005-06, and 2006-07.

If yes, please describe how the measures are used in making management decisions.

- No. If No, please explain why you don't have performance measures.

30. Please answer the questions below regarding land management reviews required by sections 259.036(6) and 373.591(5), *Florida Statutes*.

a. In general, what have been the findings and recommendations of the reviews?

b. How do you use review findings and recommendations?

c. What do you see as the strengths and weaknesses of the land management review process?

d. Are land management reviews needed? (Please explain your answer.)

Yes.

No.

e. How could the land management reviews be improved?

31. What are the major challenges faced by your agency in conducting its land management activities and how could these challenges be addressed?

---

Name of Agency:

Contact Person:

Phone Number:

E-mail Address:

Please complete this survey and return it to OPPAGA by **August 10, 2007**.

Thank You!

[Print Form](#)

[Submit by Email](#)