



---

# Health Quality Subcommittee

**Tuesday, December 4, 2012  
8:30 AM - 10:00 AM  
306 HOB**

**Will Weatherford  
Speaker**

**Kenneth L. "Ken" Roberson  
Chair**

# Committee Meeting Notice

## HOUSE OF REPRESENTATIVES

### Health Quality Subcommittee

**Start Date and Time:** Tuesday, December 04, 2012 08:30 am  
**End Date and Time:** Tuesday, December 04, 2012 10:00 am  
**Location:** 306 HOB  
**Duration:** 1.50 hrs

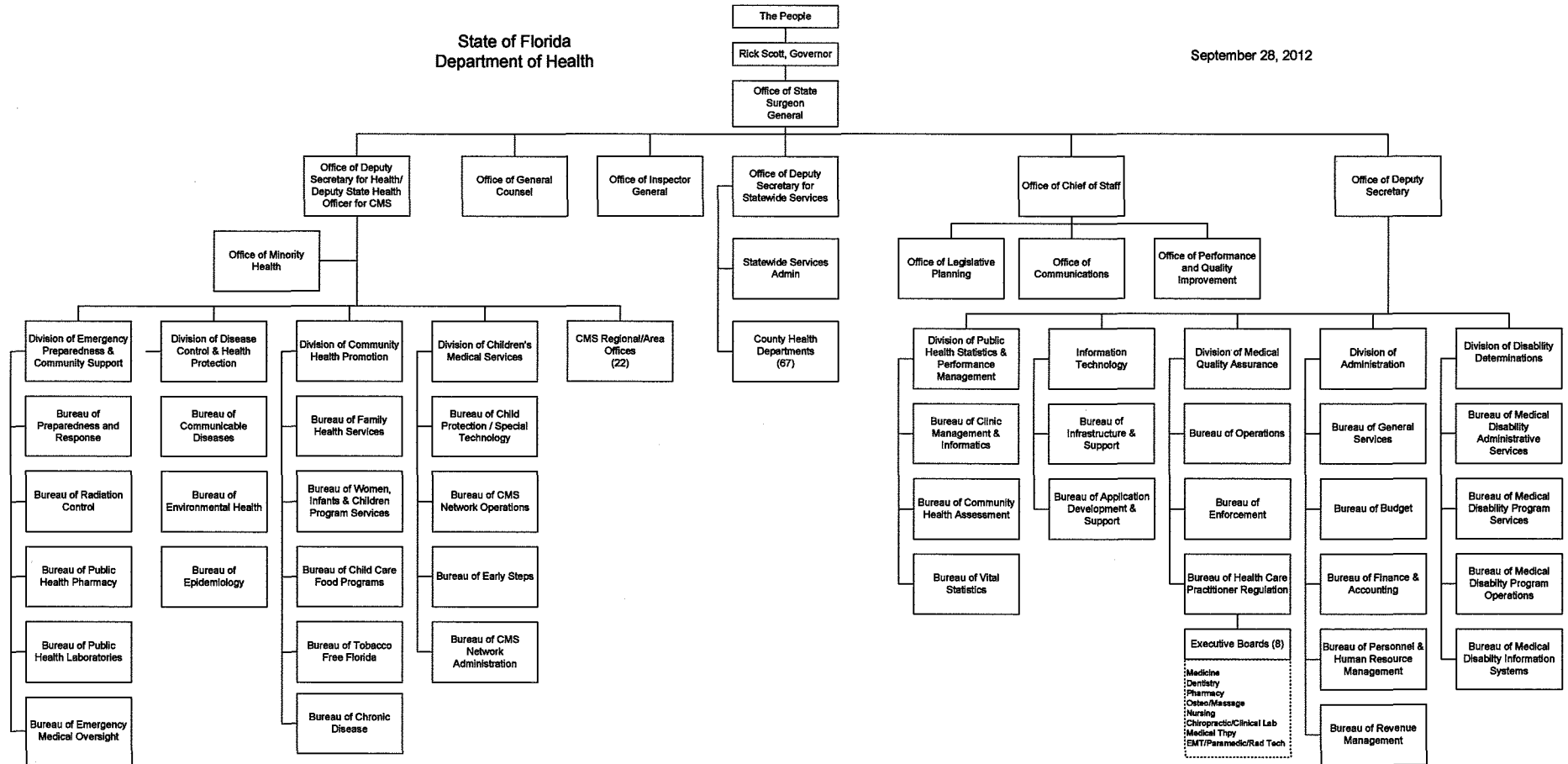
Presentation of Overview by the Department of Health

**NOTICE FINALIZED on 11/27/2012 16:13 by Iseminger.Bobbye**





# Who we are



# Who we are

- Authority: Established by the Legislature in 1996
- Employees: 16,500 statewide
- Organization:
  - A State Health Office in Tallahassee, 9 Divisions with statewide responsibilities
  - 67 County Health Departments
  - 22 Children's Medical Services area offices
  - 12 Medical Quality Assurance regional offices
  - 9 Disability Determination regional offices and
  - 4 public health laboratories

# Who we are

- **Nine Divisions**
  - Disease Control & Health Promotion
  - Community Health Promotion
  - Emergency Preparedness & Community Support
  - Children's Medical Services
  - Medical Quality Assurance
  - Disability Determination
  - Public Health Statistics & Performance Management
  - Information Technology
  - Administration

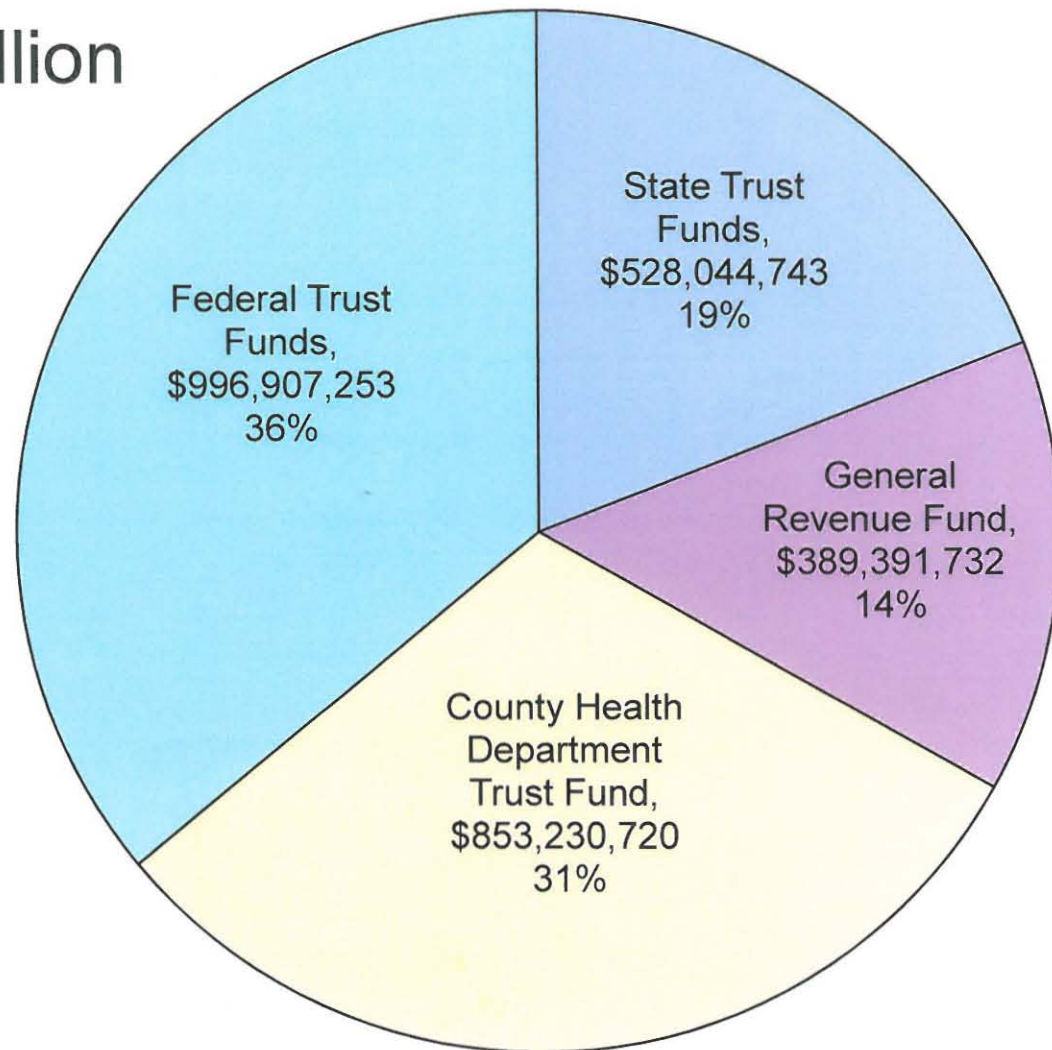
## What we do

***Mission Statement:*** To protect and promote the health of all residents and visitors in the state through organized state and community efforts, including cooperative agreements with counties.



# Budget

- Budget: \$2.79 billion (FY 2012-13)



# Medical Quality Assurance

- **BOARDS**

- *Acupuncture*
- *Athletic Training*
- *Chiropractic Medicine*
- *Clinical Laboratory Personnel*
- *Clinical Social Work, Marriage and Family Therapy, and Mental Health Counseling*
- *Dentistry*
- *Hearing Aid Specialists*
- *Massage Therapy*
- *Medicine*
- *Nursing*
- *Nursing Home Administrators*
- *Occupational Therapy*
- *Opticianry*
- *Optometry*
- *Orthotists and Prosthetists*
- *Osteopathic Medicine*
- *Pharmacy*
- *Physical Therapy Practice*
- *Podiatric Medicine*
- *Psychology*
- *Respiratory Care*
- *Speech-Language Pathology and Audiology*

- **COUNCILS**

- *Certified Nursing Assistants*
- *Dietetics and Nutrition Practice*
- *Electrolysis*
- *Licensed Midwifery*
- *Medical Physicists*
- *Physician Assistants*

- **DEPARTMENT REGULATED PROFESSIONS**

- *Dental Laboratories*
- *Certified Master Social Worker*
- *Office Surgery Centers*
- *Optical Establishments*
- *Pain Management Clinics*
- *School Psychologists*

# Medical Quality Assurance

- The **Prosecution Services Unit (PSU)** is responsible for providing legal services in the regulation of all health care boards and councils.
  - Attorneys review the investigative report to recommend a course of action which may include:
    - **Emergency Orders (EO):** The State Surgeon General issues EOs against licensees who pose an immediate threat to the health, safety, and welfare of the people of Florida.
      - 333 Emergency Suspension Orders Issued - 11/1/2011 – 11/1/2012
      - 8 Emergency Restriction Orders Issued - 11/1/2011 – 11/1/2012
    - **Expert Review:** Due to the nature and complexity of health care cases, professional health care experts may be obtained to review completed investigations and render an opinion, where applicable.
  - Final disciplinary action, if any, is determined by DOH Boards and Councils.

# Disability Determination

- The Division of Disability Determinations is responsible for making decisions regarding the medical eligibility of Florida citizens applying for disability benefits under the federal Social Security and Supplemental Security Income programs, and the state Medically Needy program. It is also responsible for conducting reviews of existing beneficiaries under the federal programs and determining continuing eligibility.
  - 1,020,416 Florida citizens received \$10 billion in cash federal disability benefits.

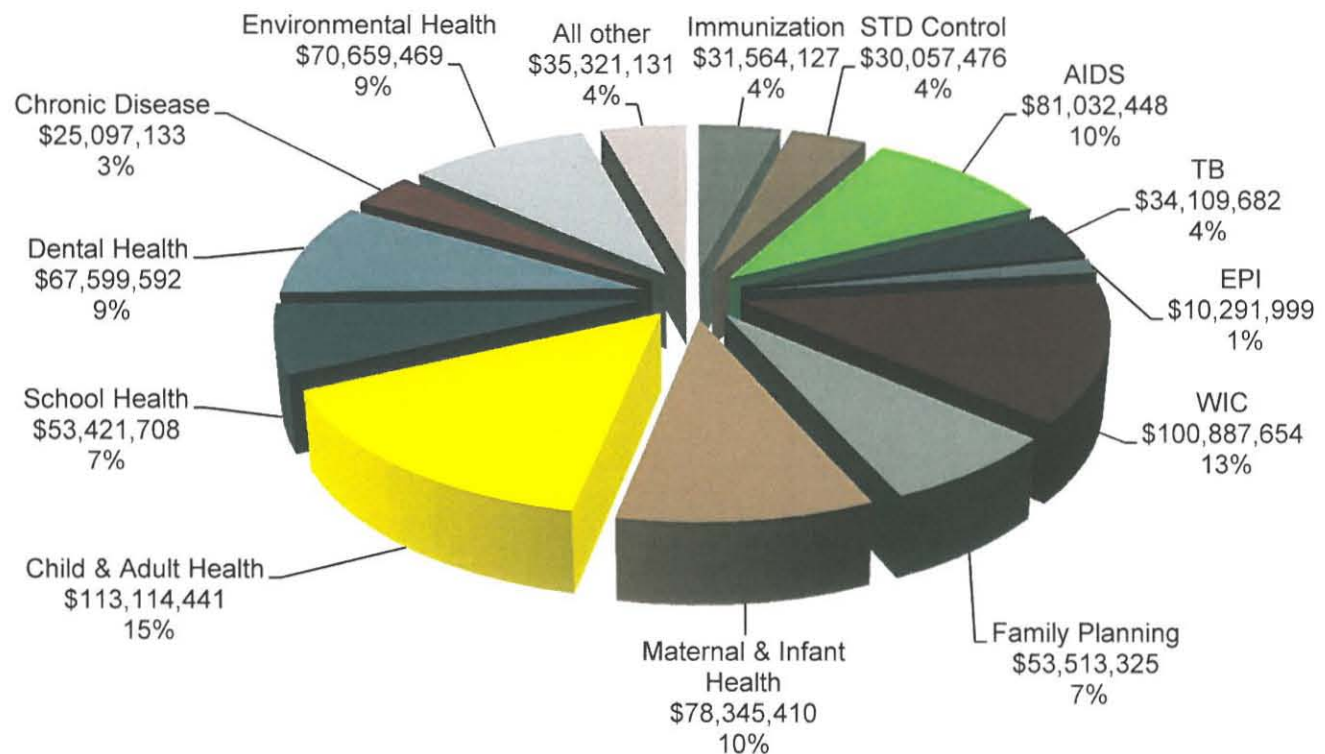
# Public Health Statistics & Performance Management

- **Bureau of Vital Statistics:** Provides for the issuance of certifications of birth, death, fetal death, marriage, and divorce records(2.5 million/yr.).
- **www.FloridaCHARTS.com:** In support of community and state level health assessment and planning activities Florida Charts provides a county by county analysis where you can look up health indicators such as injuries, chronic diseases, communicable diseases, statistics on births, disease morbidity and mortality, health risk behaviors, socio-economic and health resources.

# County Health Departments

- Make up 72% of the Department's workforce.
- Delivery arm of programs and services throughout state.

County Health  
Departments  
Estimated  
Expenditures  
FY 2012-2013  
\$785,015,595



# Disease Control & Health Protection

- **Bureau of Environmental Health:**

- Safe food and water.
- Safe disposal of wastewater through onsite sewage systems.

- **Bureau of Epidemiology:**

- Surveillance of more than 100 reportable diseases.

- **Bureau of Communicable Diseases:**

- AIDS Drug Assistance Program.
- Immunizations.
- Hepatitis Prevention.

# Community Health Promotion

- **Tobacco Free Florida:**

- \$65 million in state funds.
- \$2 million in federal funds.
- Decreases in smoking estimated to save \$4.2 billion in health care.

- **WIC Program Services:**

- Provides nutritious foods to women, infants and children up to age 5 who are at a minimum of 185% Federal Poverty Level.
- Serves, on average, over 495,000 clients/month.

- **Biomedical Research Program:**

- Provides funding for biomedical research through the James & Esther King and the Bankhead/Coley programs.



# Community Health Promotion

- **Bureau of Child Care Food Programs:**

- Provides nutritious meals to children through public-private partnerships with organizations. Programs are funded by the U.S. Department of Agriculture Food and Nutrition Service.

- **Public Health Dental program:**

- Promotes and administers oral health education, preventive dental programs through the County Health Departments.

- **Healthy Start:**

- Assists pregnant women, infants, and children up to age 3 to obtain the health care and social support needed to reduce the risks for poor maternal and child health outcomes including infant mortality, and to promote good health and developmental outcomes.

# Emergency Preparedness & Community Support

- **Bureau of Preparedness and Response:**
  - Provides all-hazards planning, for potential catastrophic events, natural and man-made.
- **Bureau of Emergency Medical Oversight:**
  - Ensures emergency medical services and trauma centers meet standards of care, and provides a system of care for traumatic brain/spinal cord injured survivors.
- **Bureau of Radiation Control:**
  - Regulates and inspects radiation machines, laboratory testing of soil, water, air samples for radiation detection and control.
- **Bureau of Public Health Pharmacy:**
  - Supports pharmaceutical services provided by county health departments, including repackaging, dispensing, and the purchase and distribution of immunizations and other pharmaceuticals.

# Children's Medical Services

- **CMS Network:**

- Serves children with chronic and serious conditions who are enrolled in Medicaid, Kidcare or who are not covered by these programs and have specialized unmet health care needs (Safety Net).
- 80,796 children enrolled as of November 2012.

- **CMS Early Steps:**

- Provides early intervention services to a child who has a developmental delay or is at risk of a developmental delay of eligible infants and toddlers from birth to 36 months and their families.
- 27,213 children enrolled as of October 2012.

# Children's Medical Services

- **Newborn Screening:**

- Identifies 36 rare metabolic, endocrine, enzymatic, and other genetic disorders and tracks screening for hearing loss.
- 212,652 newborns screened of 213,699 live births in 2011.
- 265,362 specimens tested, 486 newborns diagnosed with metabolic or other disorder, 216 newborns diagnosed with hearing loss in CY 2011.

- **Child Protection Teams:**

- Provides medical, psychological, psychosocial and other needed assessments to help diagnose a history of child abuse or neglect.
- 28,953 children served in FY 2011-12.

# Office of Minority Health

- Primary responsibility is to improve health and health care outcomes for racial and ethnic minority communities.
- Seeks to eliminate health disparities as they relate to groups impacted by disability, gender, age, socio-economic status, mental/behavioral health problems and sexual orientation.
- We are committed to culturally and linguistically competent systems that will ensure the needs of minority communities are integrated and addressed within health-related programs across the state.

# Contact information

- Kristina Wiggins, Deputy Secretary
  - Kristina\_Wiggins@doh.state.fl.us
  - 850-245-4259
- Dr. Dennis Cookro, Deputy Secretary for Health and Children's Medical Services
  - Dennis\_Cookro@doh.state.fl.us
  - 850-245-4208
- Michael Cantens, Legislative Affairs Director
  - Michael\_Cantens@doh.state.fl.us
  - 850-245-4006