



Healthy Families Subcommittee

Meeting Packet

Wednesday, February 19, 2014
9:00 AM – 11:00 AM
Webster Hall

Will Weatherford
Speaker

Gayle B. Harrell
Chair

Committee Meeting Notice

HOUSE OF REPRESENTATIVES

Healthy Families Subcommittee

Start Date and Time: Wednesday, February 19, 2014 09:00 am
End Date and Time: Wednesday, February 19, 2014 11:00 am
Location: Webster Hall (212 Knott)
Duration: 2.00 hrs

Consideration of the following bill(s):

HB 715 Family Care Councils by Diaz, J.

Human Trafficking: Presentations by providers of residential victim services

- Natasha Nascimento, Executive Director, Redefining Refuge
- Charles Bender, Ed.D., Founding Executive Director, Place of Hope/Hope House
- Trudy Novicki, Executive Director, Kristi House
- Kimberly McGrath, Psy.D., and Maria Alonso, Citrus Health Network, CHANCES program
- Mary Frances Bowley, Founder/Chief Strategic Officer, Wellspring Living

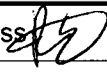
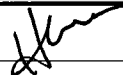
Pursuant to rule 7.12, the deadline for amendments to bills on the agenda by non-appointed members is 6:00 p.m., Tuesday, February 18, 2014.

By request of the chair, all committee members are asked to have amendments to bills on the agenda submitted to staff by 6:00 p.m., Tuesday, February 18, 2014.

NOTICE FINALIZED on 02/12/2014 16:20 by Villar.Melissa

HOUSE OF REPRESENTATIVES STAFF ANALYSIS

BILL #: HB 715 Family Care Councils
SPONSOR(S): Diaz
TIED BILLS: IDEN./SIM. **BILLS:** SB 762

REFERENCE	ACTION	ANALYST	STAFF DIRECTOR or BUDGET/POLICY CHIEF
1) Healthy Families Subcommittee		Entress 	Brazzell 
2) Health & Human Services Committee			

SUMMARY ANALYSIS

Family Care Councils (FCCs) are local councils that advise the Agency for Persons with Disabilities on the needs of self-advocates and their families. The bill amends s. 393.502, F.S., to change membership eligibility of FCCs. The bill allows grandparents and persons waiting to receive services to be members of FCCs.

The bill does not appear to have a fiscal impact on state or local government.

The bill provides an effective date of July 1, 2014.

FULL ANALYSIS

I. SUBSTANTIVE ANALYSIS

A. EFFECT OF PROPOSED CHANGES:

Current Situation

The Agency for Persons with Disabilities

The Agency for Persons with Disabilities (APD) was created to serve the needs of Floridians with developmental disabilities. APD works in partnership with local communities and private providers to assist people who have developmental disabilities and their families. APD serves more than 50,000 individuals with autism, cerebral palsy, spina bifida, intellectual disabilities, down syndrome, and Prader-Willi syndrome.¹

APD is unable to provide services to all individuals with developmental disabilities. Individuals who are eligible for APD services are prioritized according to need and some individuals are placed on a waiting list for services.² As of February 2, 2014, 29,915 individuals were receiving services from APD and 21,290 individuals were on the waiting list to receive services.³

Family Care Councils

In 1993, the Florida Legislature established Family Care Councils (FCCs) to advise on policy issues relevant to the community and family support system in the local area.⁴ FCCs are located within each service area of APD, of which there are 15.⁵ Examples of services provided by APD include adult day training, personal care services, and specialized therapies.⁶

The primary functions of the local FCCs are to:

- Assist in providing information and outreach to families;
- Review the effectiveness of service programs and make recommendations with respect to program implementation;
- Advise the agency with respect to policy issues relevant to the community and family support system in the local area; and
- Meet and share information with other local family care councils.⁷

Membership of Family Care Councils

Each local FCC must have between 10 and 15 members. Members of each FCC must be recommended by a majority vote of the local FCC and then appointed by the Governor. Each FCC must include the following members:

- At least three of the members of the council must be consumers.⁸
 - One of these members must be a consumer who received services within the four years prior to the date of recommendation, or the legal guardian of such a consumer.

¹ Agency for Persons with Disabilities, *About Us*, accessible at: <http://apd.myflorida.com/about/> (last accessed 2/12/14).

² Agency for Persons with Disabilities, *Waiting List*, accessible at: <http://apd.myflorida.com/customers/waitlist/> (last accessed 2/12/14).

³ E-mail correspondence with Jared Torres, Legislative Affairs Director, Agency for Persons with Disabilities, 2/10/14.

⁴ S. 393.502 (7), F.S.

⁵ S. 393.502(1), F.S.

⁶ S. 393.006 (3), F.S.

⁷ S. 393.502 (7), F.S.

⁸ The term "consumers" is not defined in ch. 393, F.S., but is used by APD to refer to individuals eligible for APD services per ch. 393, F.S.

- The remainder of the council members must be parents, guardians, or siblings of persons with developmental disabilities who qualify for services pursuant to Ch. 393, F.S.⁹

At least three of the members must be self-advocates, and the remaining membership must be family or guardians of qualified consumers.¹⁰

APD has experienced difficulty recruiting and retaining membership on the FCCs.¹¹

Effect of Proposed Changes

The bill amends the membership eligibility for FCCs. The bill allows grandparents of persons with developmental disabilities who qualify for services pursuant Ch. 393, F.S., to serve on FCCs.

The bill also changes the requirement for the three members of the councils that are consumers. The bill allows these members to be persons currently receiving or waiting to receive services from APD rather than only consumers.

B. SECTION DIRECTORY:

Section 1: Amends 393.502, F.S., relating to family care councils.

Section 2: Provides for an effective date.

II. FISCAL ANALYSIS & ECONOMIC IMPACT STATEMENT

A. FISCAL IMPACT ON STATE GOVERNMENT:

1. Revenues:

None.

2. Expenditures:

None.

B. FISCAL IMPACT ON LOCAL GOVERNMENTS:

1. Revenues:

None.

2. Expenditures:

None.

C. DIRECT ECONOMIC IMPACT ON PRIVATE SECTOR:

None.

D. FISCAL COMMENTS:

The bill does not have a fiscal impact on state or local government.

⁹ S. 393.502(2)(a), F.S.

¹⁰ APD analysis of HB 715, January 31, 2014, on file with subcommittee staff.

¹¹ APD legislative proposal.

III. COMMENTS

A. CONSTITUTIONAL ISSUES:

1. Applicability of Municipality/County Mandates Provision:

Not applicable. This bill does not appear to affect county or municipal governments.

2. Other:

None.

B. RULE-MAKING AUTHORITY:

None.

C. DRAFTING ISSUES OR OTHER COMMENTS:

None.

IV. AMENDMENTS/ COMMITTEE SUBSTITUTE CHANGES

HB 715

2014

1
2
3
4
5
6
7
8
9
10
11
12
13
14
15
16
17
18
19
20
21

A bill to be entitled
An act relating to the family care councils; amending
s. 393.502, F.S.; revising membership criteria for
family care councils; providing an effective date.

Be It Enacted by the Legislature of the State of Florida:

Section 1. Paragraph (b) of subsection (2) of section
393.502, Florida Statutes, is amended to read:

393.502 Family care councils.—

(2) MEMBERSHIP.—

(b) At least three ~~of the~~ members of the council must be
persons currently receiving or waiting to receive services from
the agency consumers. One such member shall be a person who has
been receiving consumer who received services within the 4 years
prior to the date of recommendation, ~~or the legal guardian of~~
~~such a consumer~~. The remainder of the council members shall be
parents, grandparents, guardians, or siblings of persons who
have with developmental disabilities and who qualify for
services pursuant to this chapter.

Section 2. This act shall take effect July 1, 2014.

**Presentations on
Human Trafficking**



Trudy Novicki Biographical Sketch

Trudy Novicki has spent her career of 35 years in public service, beginning as a prosecutor in Miami-Dade in 1978. For 25 years she served in the State Attorney's Office, including as Chief Assistant, winning important cases and locking up high profile criminals. Ms. Novicki began her second career and followed her calling in 2003 when she began overseeing the care and healing of child sexual abuse victims as leader of Kristi House, the Children's Advocacy Center serving large, diverse Miami-Dade County. Through her role as a prosecutor, she understood the particular challenges in trying child sexual abuse cases and was well suited to lead the Child Advocacy Center's multidisciplinary team.

Kristi House has grown significantly under Ms. Novicki's leadership, and became a member of National Child Traumatic Stress Network in 2012 as a federal SAMHSA grantee to improve the capacity of the child welfare system in South Florida to deliver evidence-based interventions for child sexual-related trauma.

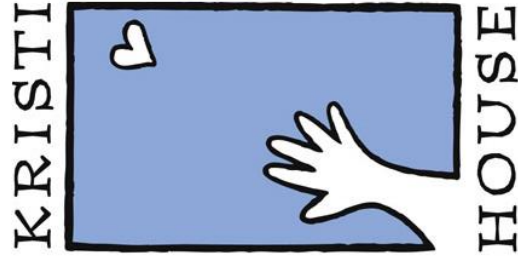
Another major initiative under Ms. Novicki that began in 2007 addresses children exploited in prostitution and pornography. The agency's Project GOLD program provides services for commercially sexually exploited children 11 to 17 to help them escape sex trafficking and receive trauma-informed intervention, medical and mental health services to help them restore their lives.

Kristi House has become a leading voice in Florida, nationally and internationally around the issue of child sex trafficking as one of the first CACs to recognize and respond to the problem of CSEC. Ms. Novicki authored the bill and advocated for Florida's Safe Harbor Act, which became law in 2013. Ms. Novicki and her team have trained many other communities throughout the country on how to set up a similar program.

Ms. Novicki has been a member of the adjunct faculty of the University of Miami Law School since 1989. She holds a JD degree from Vanderbilt University and a bachelor's degree from University of Maryland. She is the mother of five children, now adults.

Kristi House & CSEC

Project GOLD



Trudy Novicki, JD
Executive Director
Kristi House, Inc.
Children's Advocacy Center
Miami

From child prostitute to exploited child (2007-2010)

- Training – GEMS 2007, Dallas Police Dept. 2008
- Miami CSEC Working Group, Working Group, Statewide DCF/ FDLE Task Force

Miami CSEC Working Group

Alliance for GLBTQ Youth	Miami-Dade Police Strategic Investigations Unit
Center for Family and Child Enrichment	Miami Bridge
ChildNet, Inc.	Miami Dade Public Schools
Children's Home Society	Miami Dade Women's Fund
Citrus Health	Miami Gardens Police Dept. Economic Crimes
Connect 2 Protect - UM Adolescent Medicine	Miami Movement Against Human Trafficking
DCF	Miami Police Department Special Victims Unit
DCF - Refugee Services - S. Region	Mount Degl & Associates
Delta Psychological Group	Office of the Attorney General
Family Counseling Services	Open Arms International (CFCE)
FBI	Our Kids
FBI Miami	Shared Hope International
Florida Department of Health	Stand Up For Kids Miami
Florida Coalition Against Human Trafficking	State Attorney's Office - Sex Bat/Child Abuse Unit
Florida Freedom Partnership	The Children's Hope, Inc.
Florida Immigrant Advocacy Center	The Children's Trust
Girls Advocacy Project	The Journey Institute Program
His House Children's Home	The Village South
Homestead Police Department	UM Adolescent Medicine
Juvenile Court Operations	UM Health, Miller School of Medicine
Juvenile Justice Center	UM Law Student- Org. for Human Rights
Juvenile Services Department	United States Attorney's Office
Key Biscayne Presbyterian Church	University of Miami
Kristi House	Victim Response Inc./The Lodge
Miami-Dade Police Domestic Crimes Bureau	Women Protecting Women
Miami-Dade Police Sexual Crimes Unit	

From child prostitute to exploited child **(2007-2010)**

- Training – GEMS 2007, Dallas Police Dept. 2008
- Miami CSEC Working Group, Statewide DCF/FDLE Task Force
- Kristi House Board expands definition of sexual abuse to include exploited children



From child prostitute to exploited child **(2007-2010)**

- Training – GEMS 2007, Dallas Police Dept. 2008
- Miami CSEC Working Group, Statewide DCF/FDLE Task Force
- Kristi House Board expands definition of sexual abuse to include exploited children
- DCF expands child maltreatment code to include trafficked children

From *child prostitute* to *exploited child* (2007-2010)

- International and national support
 - National Children’s Alliance, first *Urban Initiative*
 - World Childhood Foundation
 - U.S. Department of Justice – training and services over 3 years, through FNCAC



NATIONAL
CHILDREN'S
ALLIANCE®

ACCREDITED
MEMBER



CHILDHOOD

FOUNDED BY H.M. QUEEN SILVIA OF SWEDEN

WORLD CHILDHOOD FOUNDATION

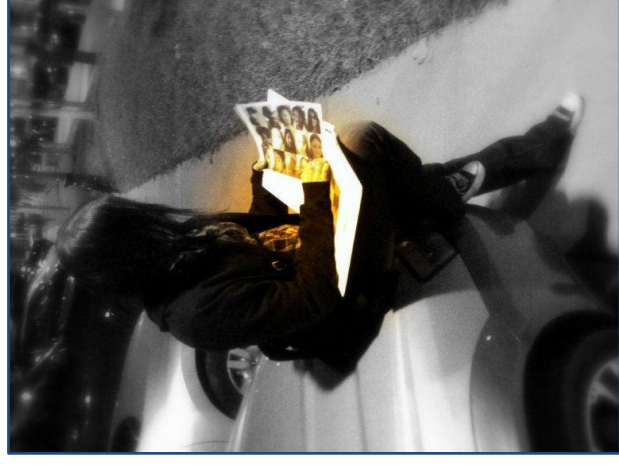


From *child prostitute to exploited child* (2007-2010)

- Initial focus: awareness, outreach, case management and therapy



Super Bowl Training, Miami, 2010



Street Outreach

From child prostitute to exploited child **(2007-2010)**

- Initial focus: awareness, outreach, case management and therapy
-Kristi House Project GOLD (Girls Owning their Lives and Dreams)



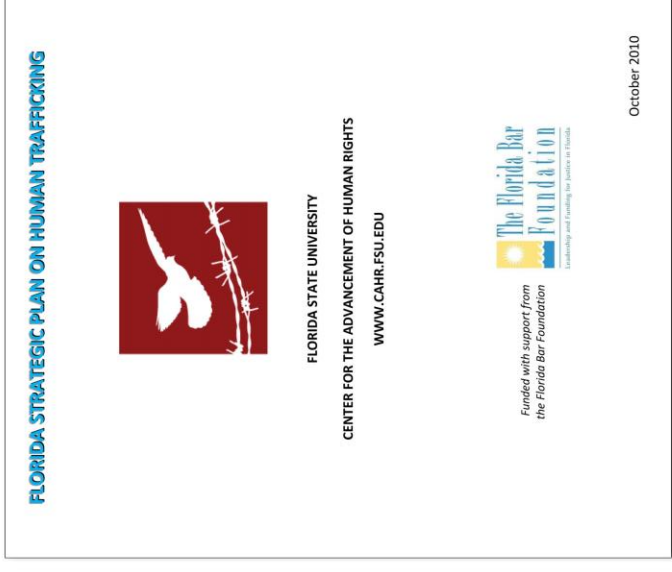
From *Delinquency to Dependency* and from *Pimp to Trafficker* (2010-2013)

- Miami CSEC Working Group – specialized housing needed



From *Delinquency to Dependency* and from *Pimp to Trafficker* (2010-2013)

- Miami CSEC Working Group – specialized housing needed
- Florida Strategic Plan on Human Trafficking – critical housing need



From *Delinquency to Dependency* and from *Pimp to Trafficker* (2010-2013)

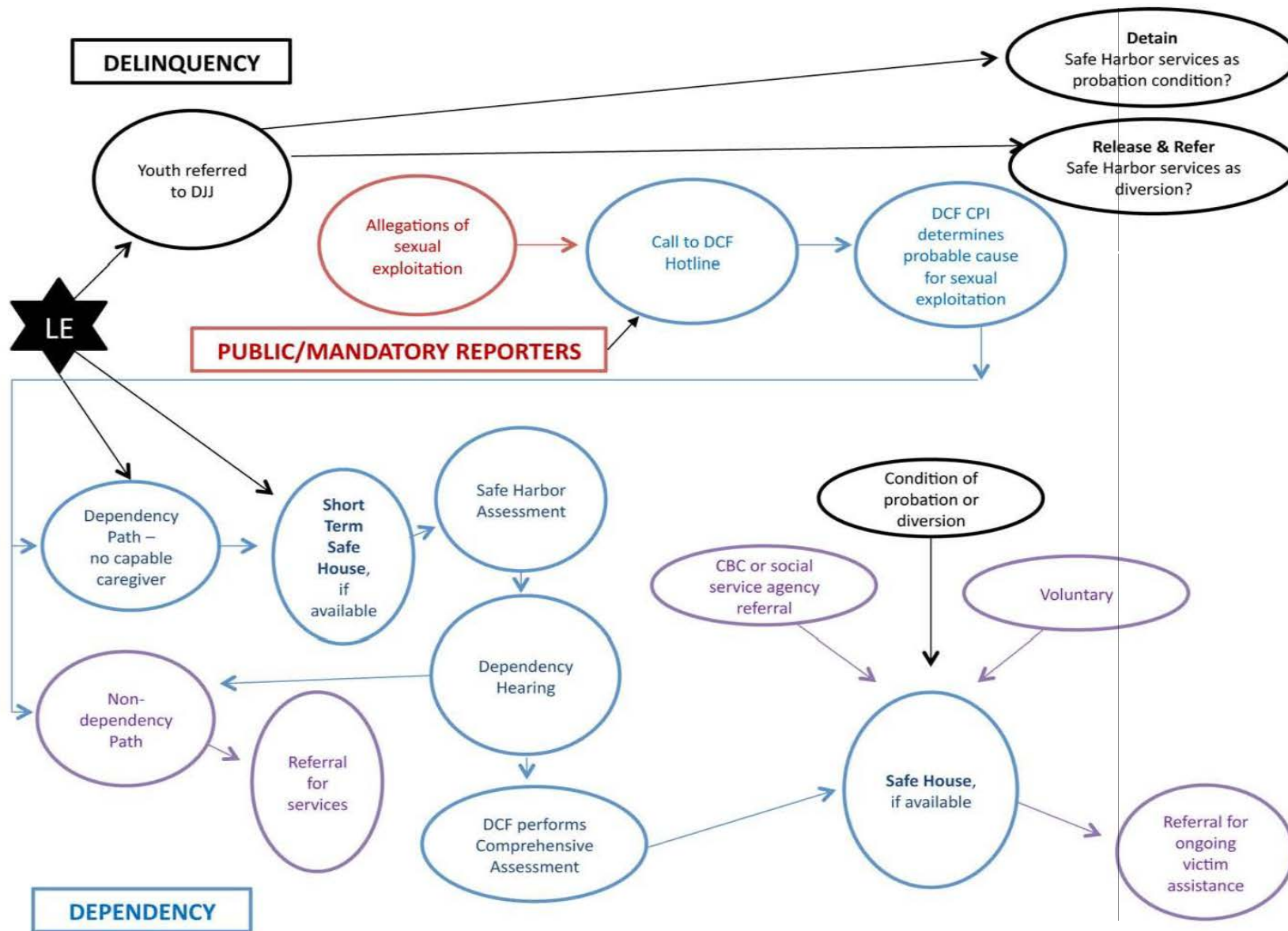
- Miami CSEC Working Group – specialized housing needed
- Florida Strategic Plan on Human Trafficking – critical housing need
- Birth & evolution of Safe Harbor framework



Gov. Scott signing Safe Harbor into law at
Kristi House, June 2012

From *Delinquency to Dependency* **and from *Pimp to Trafficker* (2010-2013)**

- Miami CSEC Working Group – specialized housing needed
- Florida Strategic Plan on Human Trafficking – critical housing need
- Birth & evolution of Safe Harbor framework
- **Implementation planning – with DCF**



The Kristi House Short-Term Safe House

The Vision vs. The Reality (March-June 2013)

- Drop in center/short term emergency shelter transitioning to long term safe house (the vision)

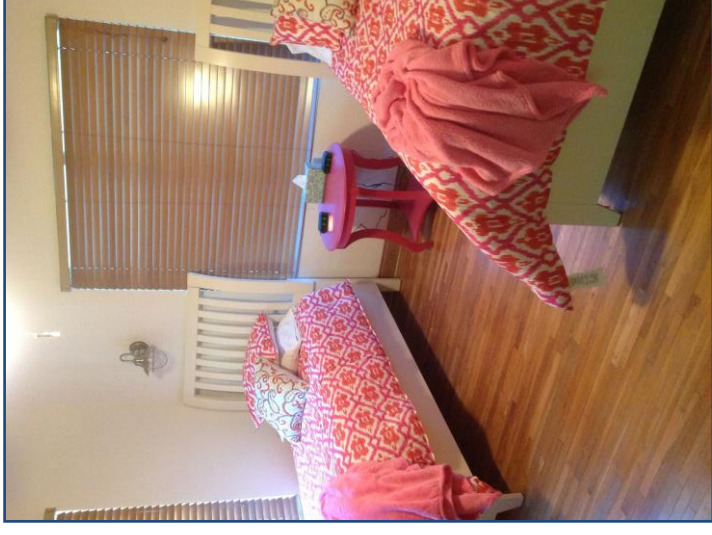


Holland & Knight volunteers in March 2013
prepare the house for opening

The Kristi House Short-Term Safe House

The Vision vs. The Reality (March-June 2013)

- Drop in center/short term emergency shelter transitioning to long term safe house (the vision)
- 30 days++ shelter (the reality)



The Kristi House Short-Term Safe House

The Vision vs. The Reality (March-June 2013)

- Drop in center/short term emergency shelter transitioning to long term safe house (vision)
- 30 days++ shelter (the reality)
- Runaways expected vs. zero tolerance by DCF

The Kristi House Short-Term Safe House

The Vision vs. The Reality (March-June 2013)

- Drop in center/short term emergency shelter transitioning to long term safe house (vision)
- 30 days++ shelter (the reality)
- Runaways expected vs. zero tolerance by DCF
- Staffing – doubled required DCF licensing levels

The Kristi House Short-Term Safe House

The Vision vs. The Reality (March-June 2013)

- Drop in center/short term emergency shelter transitioning to long term safe house (vision)
- 30 days++ shelter (the reality)
- Runaways expected vs. zero tolerance by DCF
- Staffing – doubled required DCF licensing levels
- Funding – private, DCF/Our Kids bed rate, BHOS inadequate

The Kristi House Short-Term Safe House

The Vision vs. The Reality (March-June 2013)

- Drop in center/short term emergency shelter transitioning to long term safe house (vision)
- 30 days++ shelter (the reality)
- Runaways expected vs. zero tolerance by DCF
- Staffing – doubled required DCF licensing levels
- Funding – private, DCF/Our Kids bed rate, BHOS inadequate
- **Lessons learned: strengths & weaknesses**

Project GOLD Drop In Center & Kristi House Therapy (2014 & on)

- Back to our roots

Victim, Survivor, Leader™

New York, NY
March 2013

GEMS
Girls Empowering Mentors & Survivors

PROJECT GOLD
GIRLS OWNING THEIR LIVES AND DREAMS

Drop In Center

What is it?
The Drop In Center is home to Project GOLD, a membership organization for girls who have been exposed to sexual exploitation. The Center welcomes all sexually exploited girls, regardless of their current residential placement. It is a place where girls are empowered to find their strengths in a non-judging, healing environment.

Who is it for?
Girls who have been affected by sexual exploitation are welcome at the Center any time we are open. A counselor is always available to talk or girls can just relax or study in the home-like setting. Food is always available and casual supporters will be provided during evening groups.

Drop In Center
Programming is based on the Victim, Survivor, Leader model of G.E.M.S.™, widely regarded as the forerunner in helping girls and young women escape sexual exploitation. Project GOLD is shaped and directed by survivor input, reflected in the program name created by founding clients. Project GOLD = Girls Owning their Lives and Dreams.

We encourage girls to consider membership in Project GOLD in order to take full advantage of the Program's incentives. Project GOLD also encourages referrals from public and private agencies, law enforcement, and the judiciary. The referrals can be general and open ended, or for a specific number of visits as part of a diversion program.

Since the program is client-informed, exact offerings will change from month to month. A specific monthly schedule can always be obtained by calling the hotline. Referrals can be made by email or by calling the hotline. There is no charge for Project GOLD services and some transportation is available.

Project GOLD Hotline: 1-877-GOLD-916
projectgoldreferrals@kristihouse.org

Project GOLD Drop In Center & Kristi House Therapy (2014 & on)

- Back to our roots
- NCTSN and University of Miami research on CSEC victims
 - what our research is telling us
 - ongoing projects



Profile comparison of adolescent victims of commercial sexual exploitation vs. sexually abused adolescents: A pilot study

January 2014

 **UHealth** | **MILLER**
UNIVERSITY OF MIAMI HEALTH SYSTEM | SCHOOL OF MEDICINE
UNIVERSITY OF MIAMI

Department of Psychiatry
Division of Child and Adolescent Psychiatry

Jon Shaw, MD
Chitva Harvey, MD
John Lewis, PhD
Trudy Novicki, JD

Project GOLD Drop In Center & Kristi House Therapy (2014 & on)

- Victim, Survivor, Leader...back to our roots
- NCTSN and University of Miami research on CSEC victims
 - what our research is telling us
 - ongoing projects
- Expanding the role of the MDT team



Trudy Novicki • Kristi House • Project GOLD

Project GOLD Drop In Center & Kristi House Therapy (2014 & on)

- Victim, Survivor, Leader...back to our roots
- NCTSN and University of Miami research on CSEC victims
 - what our research is telling us
 - ongoing projects
- Expanding the role of the
- Training and prevention

Calendar of Events

APR 9 Wed

CSEC Training (Commercial Sexual Exploitation of Children) @ Kristi House
1:30 pm – 4:30 pm

This is a 3-hour training geared for staff and volunteers of child-serving organizations and programs as well as parents and teachers. Kristi House offers this free community training every other month at Kristi House. There is no cost to attend, however participants are asked to RSVP at least 3 days ahead of time by contacting Maria Clara Rodriguez as listed. There is parking at the lot on which Kristi House sits; it is controlled by the County and parking is \$7 by car.

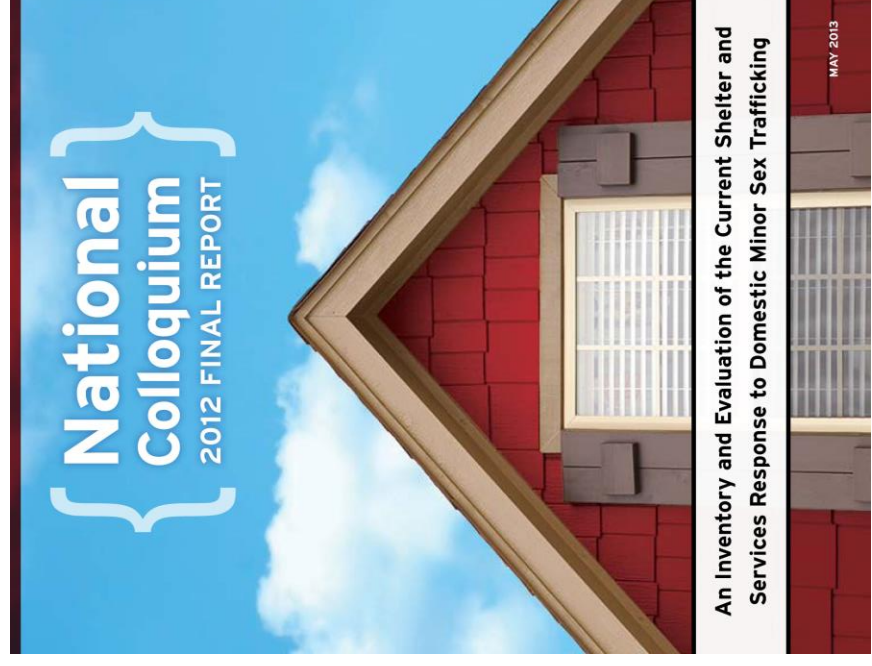
This workshop provides a basic overview of commercial sexual exploitation of children (CSEC), the extent of the problem and the impact this type of trauma has on children. It will also include tips for identifying and engaging victims and discussion of services victims need for healing and reintegration into mainstream society. The material is offered in lecture form through a PowerPoint presentation and videos. Group participation is encouraged. Participants will examine the following topics:

- What is the Commercial Sexual Exploitation of Children (CSEC) – Language and Sensitivity
- CSEC Related Issues: Child Sexual Abuse, Sexual Exploitation of Children, Domestic Minor Sex Trafficking, Sex Trafficking
- CSEC Risk Factors
- Pathways to Entry
- Addressing Demand
- Identification of CSEC Victims
- Impact of CSEC and Needs of Victims
- Tips for service provision (customized for audience)
- (This training is also appropriate for parents/caregivers.)

[Read more →](#)

Looking Ahead, Recommendations

- Safe Harbor – framework sound, time needed
- Knowing our communities
- Monitoring outcomes
- Training remaining critical
- Human Trafficking Czar managing the multiple agencies and stakeholders





Major support for Project GOLD has come from Robert Wood Johnson Local Funding Partnerships which joins the resources of a national foundation with local grantmakers to support ambitious new community initiatives that meet people where health starts—where they live, learn, work and play. Kristi House received a \$500,000 matching grant from the Robert Wood Johnson Foundation, 2011-2015, matched by:

- Allegany Franciscan Ministries
- Trish and Dan Bell
- Braman Family Charitable Fdn.
- Caring for Miami
- Eliza and Hugh Culverhouse
- Health Fdn. of South Florida
- The Ethel and W. George Kennedy Family Foundation
- Link Construction Group
- List Family Foundation
- Lourdes Leon-Vega & Otto Vega, MD
- Dr. John T. Macdonald Fdn.
- The Miami Foundation
- National Children's Alliance
- Sheri L. Orlowitz
- Paul Palank Memorial Fdn.
- The Joseph H. and Florence A. Roblee Foundation
- Trelles Cabarrocas Architects
- U.S. Department of Justice
- The Ware Foundation
- Women's Fund of Miami-Dade
- World Childhood Foundation
- Steve Zarbatany

PROJECT GOLD

GIRLS OWNING THEIR LIVES AND DREAMS

KRISTI



HOUSE

Kristi House's Project GOLD provides outreach and services to children exploited in sex trafficking to help them escape dangerous lives at the hands of traffickers and predators.

Community Collaboration Kristi House began leading the Miami community response to commercial sexual exploitation of children (CSEC) in 2007 with a program encompassing collaboration, prevention and treatment. • Project GOLD has brought the legal and provider community together around the issue of child sex trafficking, while providing health, social and legal services linkages, and mental health support to sexually exploited girls, ages 11-17. • Partners include Florida Department of Children and Families, State Attorney's Office Human Trafficking Task Force, University of Miami Child Protection Team, Miami Police Department, Our Kids of Miami-Dade/Monroe, Shared Hope International Restorative Work Group and GEMS.

Most sexually exploited children were first child sexual abuse victims.

Pimps use deception, violence and coercion to commercially sexually exploit vulnerable children.

South Florida is ranked as the third busiest hub for child sex trafficking in the United States.

Understanding Project GOLD also focuses on raising awareness about the reality of children being bought and sold in the commercial sex industry and building community capacity to treat and heal victims. • Kristi House specialists have trained thousands of professionals throughout the U.S. on CSEC. • Kristi House advocated for the Florida Safe Harbor Act, which became law in 2013, now assuring exploited children are viewed as victims of crime rather than as perpetrators.

Services More than 200 children in the past five years have received services on an outpatient basis at the Project GOLD drop-in center. • Project GOLD uses a strengths-based, survivor-advised approach to help girls see a better future for themselves and restore their lives. • Kristi House hopes to continue to build its partnerships with other residential providers, and provide the best services possible for girls escaping prostitution and pornography.

Kristi House, Inc. Orlowitz-Lee Children's Advocacy Center
1265 NW 12th Avenue • Miami, Florida 33136
305-547-6800 • www.kristihouse.org

Project GOLD Hotline: 1-877-GOLD-916

September 2013



Kristi House Short-Term Safe House MANUAL Table of Contents



SECTION 1: OVERVIEW

Kristi House
Project GOLD Description
Guiding Values
Short Term Safe House Description
Organizational Chart
Job Descriptions
 Assistant Executive Director
 Residential Coordinator
 Therapist/supervisor
 Residential Child Advocate
 Residential Child Care Worker
 Safe House support staff

SECTION 2: HOUSE PROCEDURES

KH Office Locations & Hours
Directory
Safe House Security Alarm
Safe House Hours
Safe House Location & Confidentiality
 Confidentiality Agreement
Employee Recruitment & Retention
Shift Changes and coverage
Staff Orientation & Training
 Orientation Checklist
Employee Performance Evaluations
 90-Day Performance Evaluation
 Annual Work Evaluation
Volunteers & Interns
 Information Checklist
 Volunteer Timesheet
Safe House Maintenance
 Maintenance Log
 Fire Drill Log
Toxic substances

SECTION 3: DOCUMENTATION

Database Entry
Case Note Type Definitions
Errors
Email, Text and Social Media
Safe House Chart Order
End of Shift Daily Activities Communication
Communications Log Book
Visitor's Sign-in Sheet
Intake/Discharge Log

SECTION 4: ADMISSIONS PACKET

Referral Form
Referral and Intake log
Initial Screening
Client Information Form
Bio Psychosocial Form
Resident Handbook
Resident Safe House Contract
Phone and Camera Agreement
Field Trip Policy Agreement
Rights and Grievances Agreement
Resident Program Agreement

Resident Inventory Sheet
Guardian Information Packet
Guardian Confidentiality Agreement
Safe House Services Consent
Behavior Management Consent
Notice of Privacy Practices
Receipt of Privacy Practices
Research Consent Form
Victim's Compensation Form
Authorization to Release Medical Info
Authorization to Release Non-Medical Info
Release of Information Log
Medication Management Log
Medipass Change Form
Dept. of Health Referral Form
Health Check-Up Form
Oral Health Check-Up Form
Homebound School Application
Miami-Dade Public School Consent Form
URICA Assessment
URICA Scoring
Safety Plan Form
Admissions Checklist

SECTION 5: ADMISSIONS

Eligibility Criteria
Referrals and Screening
Admission Process
Admissions Forms Explanation
Case Record Confidentiality
Victim Compensation Claim
Bio Psychosocial Assessment
Bio Psychosocial Aid
Biopsychosocial Assessment Sample
Safety Planning
URICA Assessment
Medical Initial Evaluations

SECTION 6: DAILY LIFE

Daily Activities
Daily Schedule and Activities
Clothing & Personal Effects
Field Trips
Goals & Expectations
Phone & Camera Protocol
 Phone Log
 Approved Contact list
Food & Dietary Needs
 Dietary Needs Form
 Allergy Alert Form
Menus
Client Accounts
 Client Account Form
Transportation
Visitation
Education
Resident Searches
 Resident Search Form
 Nightly Bed Check Form
Safe House Youth Schedule

SH Schedule Audit
SH Planning Group

SECTION 7: WORKING w/ RESIDENTS

Boundaries
Transference & Vicarious Trauma
Motivational Interviewing
 Change Talk Update Form
Stages of Change in CSEC Counseling
MDT Staffings
MDT Info Sharing Guidelines
Grievances
 Grievance Form
Behavior Management
Circles
Medical Care
 Medical and Dental Care Log
 Medical Alert Form
 Medical Alert Progress Notes
Medication Management
 Medication Management Log
 Medication Count Shift Change

SECTION 8: CLINICAL TREATMENT

Assessment Procedures
Trauma Evaluation
TSSC
UCLA PTSD index for DSM-IV
Treatment Plans
Baker Act
Psychiatric Services
Progress Reports
Suicide Prevention

SECTION 9: DISCHARGE / CLOSING

Shelter Discharge
 Shelter Discharge Form
Referrals to Outside Agencies
Follow Up / Ongoing Cases
Case Closing Checklist

SECTION 10: SPECIAL CASES

Critical Incident Reporting
Crisis Intervention
Emergency Situations
Sexual Misconduct Among Residents
Runaways
Recruiters
Infants & Children
Domestic Violence
Disaster Plan
 Evacuation Site Agreement
 Hurricane Prep Checklist

SECTION 11: GROUPS / WORKSHOPS

Guidelines for Group Leaders
Therapeutic Support Group
Youth Leadership Program
 Curriculum Table of Contents

KRISTI



HOUSE

PROJECT GOLD

GIRLS OWNING THEIR LIVES AND DREAMS

Drop In Center

What is it?

The Drop In Center is home to Project GOLD, a membership organization for girls who have been exposed to sexual exploitation. The Center welcomes all sexually exploited girls, regardless of their current residential placement. It is a place where girls are empowered to find their strengths in a non-judging, healing environment.

Who is it for?

Girls who have been affected by sexual exploitation are welcome at the Center any time we are open. A counselor is always available to talk, or girls can just relax or study in the home-like setting. Food is always available and casual supporters will be provided during evening groups.

The Center is generally open from 10 a.m. to 7 p.m. on weekdays. Special after-hours accommodations can be made by calling the 24-hour Project GOLD hotline. The Center is located in a residential neighborhood close to midtown.

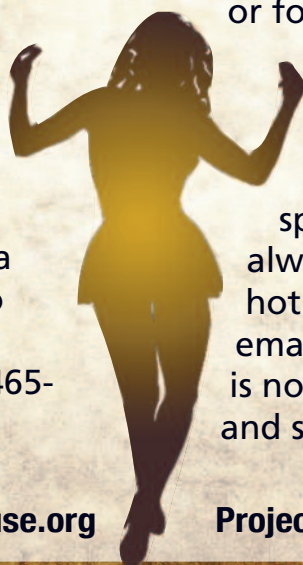
Please call the Hotline (1-877-465-3916) for address and directions.

Programming is based on the Victim, Survivor, Leader model of G.E.M.S.,¹ widely regarded as the forerunner in helping girls and young women escape sexual exploitation. Project GOLD is shaped and directed by survivor input, reflected in the program name created by founding clients. Project GOLD = Girls Owning their Lives and Dreams.

We encourage girls to consider membership in Project GOLD in order to take full advantage of the Program's incentives.

Project GOLD also encourages referrals from public and private agencies, law enforcement, and the judiciary. The referrals can be general and open ended, or for a specific number of visits as part of a diversion program.

Since the program is client-informed, exact offerings will change from month to month. A specific monthly schedule can always be obtained by calling the hotline. Referrals can be made by email or by calling the hotline. There is no charge for Project GOLD services and some transportation is available.



projectgoldreferrals@kristihouse.org

Project GOLD Hotline: 1-877-GOLD-916

How does the Project GOLD Drop In Center work?

While Project GOLD works as a team for each girl, we do believe that one-to-one relationship-building is essential to healing. Therefore, each girl who becomes a Member at the Drop In Center will be assigned a specific staff member for mentoring, advocacy, and coordination for their specialized needs relating to exploitation. Each girl who becomes a Member will have the opportunity to earn monetary rewards by attending groups. Additional incentives are available in the educational initiative and through part-time internships and fellowships. These two pages describe the types of groups offered at the Center.

Project GOLD Drop In Center Programs

New Members' Orientation

Orientation is designed to welcome new Members and to help them get a better understanding of the organization, the program, staff and all services available. *Orientation takes place once a month.*

Parent Orientation

This Orientation is designed to help clients' parents/legal guardians get a better understanding of the organization, the program, staff and all services available. *Orientation takes place once a month.*

My Life (Trauma-Therapeutic Group)

This group is designed for clients to have the opportunity to discuss traumatic situations and/or events that have occurred in their lives. Clients will learn psycho education, feeling identification and regulation, and cognitive coping and processing. They will also be able to incorporate relaxation techniques such as controlled breathing, guided imagery and progressive muscle relaxation. This group takes place once a week and incorporates the first four modules of Trauma Focused Cognitive Behavioral Therapy. Girls, upon request, may transfer to individual therapy from this group.

Survivor Support Group (Therapeutic)

This therapeutic group provides a safe environment for survivors to share their experiences while gaining insight and support. It is also designed to empower survivors to make healthy decisions and avoid self-destructive behaviors. *Once a week.*

Mindfulness Workshop

In recent years, mindfulness has been introduced to schools and youth-based programs all over the world. Emerging research studies show

that this transformational practice decreases stress, improves attention-deficit problems, depression, anxiety, and hostility. It benefits overall health, well-being, social relations, emotional regulation and academic performance. In collaboration with Mindful Kids Miami, Inc.,² Project GOLD will be offering this training for youth based on the Mindfulness Based Stress Reduction Program (MBSR) by Jon Kabat-Zinn, Ph.D. *Once a week.*

Safer Sex

This class teaches girls appropriate use of various birth control and protection methods, with the goal of reducing the risk of getting a sexually transmitted disease or infection. In this class, Members will learn how to protect themselves and make healthier decisions. They will be able to explain the importance of STD testing and condom use, distinguish between bacterial and viral STDs and the consequences and treatment of each. They will also learn to identify key aspects of practicing safe sex, as well as the expiration dates and proper use of condoms. *This class will take place once every other month or more as needed.*

"Change Your Shoes and Lean In"

Empowerment Program

This six-week program designed by author and sexual abuse survivor, Kathy Andersen,³ in collaboration with author and Facebook COO, Sheryl Sandberg,⁴ guides girls through a series of exercises, processes, and creative inspirations designed to encourage them to discover their dreams and create the change they want to see in their world. Kathy Andersen is a Harvard-trained leadership, success and wellbeing expert, award-winning author, speaker, consultant, and "media go-to expert" for life change.

Life Skills Group

This group is designed to help promote the mental well-being and competence in girls as they learn the necessary skills to deal effectively with the demands and challenges of everyday life. The group empowers girls to master essential life skills needed for problem solving, critical thinking, effective communication, decision-making, creative thinking, interpersonal relationships, self-awareness-building, empathy, and coping with stress and emotions. *Once a week.*

Cooking Class

In this Life Skills class, girls will have hands-on experience and be exposed to various palates. This class is designed to help clients learn cooking skills that last a lifetime and that can also help them increase self-esteem, life skills, and perceptions of abilities. The class is designed by a Kristi House Therapist. *One a month.*

Arts & Crafts Group

The creative process involved in expressing oneself artistically can help girls resolve issues as well as develop and manage behaviors and feelings, reduce stress, and improve self-esteem and awareness. This group will enable girls to use different mediums to express themselves creatively and non-verbally, while discovering new talents and enhance existing ones. It will also develop artistic skills, craft abilities, fine motor skills, hand/eye coordination, analytic skills, color coordination and creativity with use of color. The class seeks to foster individual creativity and provide a sense of hope for the future. *Twice a month.*

Recreational Group

This group is designed to help girls improve their mental and emotional well-being and help reduce depression, stress and anxiety, build confidence and socialize more effectively through fun and recreational activities. Activities may incorporate sports, games, dance and movement, drama, music, movies and more. *Once a week.*

Yoga Classes

The Center's partner will provide classes that empower girls by addressing the symptoms of trauma and poverty such as limited education, addiction, violence, incarceration, teen pregnancy, HIV, and more through the practice of yoga. Girls will learn techniques for grounding, calming, and centering both their bodies and their minds. *Once a week.*

GED and Educational Initiative Program

The Educational Initiative Program is designed to recognize and encourage Members' school achievement. This program will assist girls with any questions they have regarding financial aid, tutoring, etc. Members will receive a stipend for passing all classes and continuing to further their education. Incentives are as follow:

- \$100 for enrolling into a GED Program, training program, or into College.
- \$500 for completing and passing all classes per school year. For Middle and High School students, this will be each report card.
- \$750 for earning a High School Diploma/GED
- \$2,000 for earning an Associate's Degree or a certificate/license for a long-term training/ vocational program.
- \$4,000 for earning a Bachelor's Degree
- The **Educational Initiative Members** meeting takes place once per week.
- The **GED Online Study** program takes place three times a week.

Youth Leadership Intensive Program

This group is based on the G.E.M.S. Youth Leadership Intensive Program designed to move Members from victims to survivors to leaders. This is an eight-week intensive program to help build critical thinking and concrete leadership skills in a supportive and loving environment.

Through this program, girls will be able to have a better understanding of the social conditions that keep commercial sexual exploitation in place. They will build public-speaking and community-organizing skills through outreach, events, advocacy and media work. The goal is to prepare youth survivors to lead the national movement to end CSEC as peer mentors and community educators.

Graduates of this program are eligible to apply for internship and later for fellowship positions at Project GOLD. Successful completion of both will make a client eligible to apply for permanent staff positions with the program. This program is also intended to help prepare participants for college and other educational settings.

Internships and Fellowships are a critical aspect in preparing girls to enter the professional working environment. The first step is the 90-day Internship (max. 10 hrs./wk), followed by the nine-month Fellowship (max, 15 hrs./wk during the academic year and 20-25 during the summer). Both are stipend activities.

The eight-week Youth Leadership Intensive takes places over the summer. Members must apply.

CHARLES L. BENDER, III

.....

Charles L. Bender, III is the Founding Executive Director of Place of Hope, Inc., a faith-based and state-licensed, family-style child welfare organization serving abused and neglected children, located in Palm Beach Gardens, Florida. He earned his bachelor's degree in Sociology from Florida Atlantic University in Boca Raton and also studied at the University of South Florida in Tampa. An accomplished administrator, Bender provides a solid combination of strategic vision, leadership, management experience, organizational development and advancement skills. Throughout his career, Bender has made it his main objective to positively impact the lives of people in need by empowering and equipping them to help themselves.

After many years of working with various housing, social and human services organizations in Palm Beach County, Bender helped establish and launch Place of Hope in 1998. Prior to the implementation and opening of Place of Hope, Bender was a primary volunteer in the multi-year visioning and development processes for the program at Christ Fellowship Church (the founding organization). Over the years, he has spearheaded numerous special initiatives in the County and has served on a variety of community committees, task forces and boards. Bender also has been an enthusiastic team member of several local leading organizations including Palm Beach County Housing and Community Development, Adopt-A-Family of the Palm Beaches, Inc., the City of Delray Beach Community Development Division, The Parent-Child Center and Charter Psychiatric Hospital. The majority of his work has involved low-income individuals and families, homeless and substance-abusing populations and at-risk and dependent children and teens.

Charles has guided Place of Hope from a 10-acre parcel of land into a safe haven for children in need. Under his direction, Place of Hope has grown from one group home to six group homes, one emergency shelter for boys, a traditional foster care program, an adoption program, a transitional independent living facility for young adults who are aging out of care, a maternity home for girls, and a safe house for victims of domestic minor sex trafficking. Under Charles' supervision, Place of Hope now serves more than 900 children and families a year. He has developed Place of Hope into a highly respected child welfare organization providing a full continuum of care for those children and youth who are in need. In fact, several local agencies have approached Place of Hope in hopes of a partnership due to the high level of respect that it has in the community. Place of Hope has partnered with KidSanctuary Campus and opened a southern campus in West Palm Beach and has also taken over The Haven in Boca Raton. Charles also devotes time to helping individuals who have a vision to help children in need to create similar organizations to serve the needs in their local communities and states.

EMPLOYMENT HISTORY

- Founding Executive Director, Place of Hope, Inc., 11/99 – Present
- Division Manager (Community Development), City of Delray Beach, 10/98 – 11/99
- Director of Operations, Adopt-A-Family of the Palm Beaches, 05/97 – 10/98
- Planner (Community Development), Palm Beach County Board of Commissioners, 12/93 – 05/97
- Counselor, Charter Hospital and Parent-Child Center, 1992 – 1993

ACCOMPLISHMENTS

In addition, Charles Bender has significant experience developing and administering social programs and award-winning low-income housing initiatives, executing growth plans, implementing federal, state and local funding programs, building organizational capacity and community coalitions, enhancing service delivery systems, raising capital and annual operating funds and managing non-profit operations. He has

more than seventeen years of direct experience interpreting, implementing and ensuring compliance with federal, state and local regulations and thirteen years in the delivery of human services and community development initiatives. His recent accomplishments include:

- Opened Place of Hope, Inc., a faith-based, family-style child welfare organization, November 1999.
- Leader and administrator of Place of Hope's activities.
- Director of comprehensive \$3 million infrastructure project, site development order and housing construction in support of unique residential campus for foster children.
- Served on the Korean Churches for Community Development Advisory Board, Los Angeles.
- Served on The Salvation Army Center of Hope Advisory Board.
- Served on the Federal Emergency Management Association's Emergency Food & Shelter Program through the local board of the United Way Palm Beach County.
- Guest presenter at the Seventh National Child Welfare Conference, Department of Health and Human Services (DHHS), Washington, D.C., 2002.
- Guest presenter for the Florida Faith-Based Association in collaboration with Governor Bush's "Faith-Based Summit," Orlando, 2002.
- Federal grant reviewer for Children's Bureau – Adoption, Abuse and Neglect Project (Discretionary Grant Program), DHHS, ACF, 2002.
- Federal panel chairman and grant reviewer for Compassion Capital Fund Demonstration Program, DHHS, Office of Community Services, 2002.
- Focus group participant, Committee on Child & Family Security, Florida House of Representatives, "Faith-Based Services for Children and Families Project," Tallahassee, October 2002.
- Guest presenter at the "Governor's Faith & Community Conference - Strengthening Florida's Families" (Children & Families – Healthy Marriage Promotion & Foster Care), Ft. Lauderdale, 2003.
- Guest presenter at the Florida Department of Children and Families' (DCF's) Community-Based Care Conference, "Working with Faith-Based Organizations," Tampa, 2003.
- Guest presenter for the Florida DCF Prevention Conference, "Sunshine on Prevention – Preventing Child Abuse and Neglect in Florida," Orlando, 2003.
- Invoked at the "Governor's Strengthening Families Symposium," Tallahassee, 2003.
- Member of the Palm Beach County Children's Services Council (independent taxing authority), appointed by Florida's Governor Jeb Bush, February 2003.
- Member of the Governor's Faith-Based Advisory Board, appointed by Florida's Governor Jeb Bush, May 2003.
- Federal panel chairman for Compassion Capital Fund Demonstration Program, DHHS, Office of Community Services, 2003.
- Guest presenter at the Annual Conference for Florida Community Development Association in 2005.
- Received Whitney Young Service Award from the Gulf Stream Council Boy Scouts of America, 2005.
- Opened Seven Stars Emergency Shelter for boys, 2006.
- Opened Villages of Hope, Inc., a transitional residential facility for emancipated foster and other homeless youth, 2006.
- Director of comprehensive infrastructure project, site development order and housing construction in support of unique residential campus for transitioning youth.
- Completed the Invite Only Palm Beach County Leadership Program, 2007.
- Steering Committee participant, Families and Children in the Court, 2007.
- Served on the Palm Beach County Child Fatality Review and the Local Abuse Death Review Committees, 2005-2008.
- Opened Homes of Hope, a traditional foster care and adoption recruitment and support program, 2008.
- Served on the Fifteenth Judicial Circuit Family Law Advisory Group, 2008-2009.

- Guest presenter for the HOPE Orphan Care, Foster Care and Adoption Seminar, 2008.
- Founded Voices of Hope Child Welfare Network, 2008.
- Served on the Governor's Faith-Based Adoption Initiative Core Group, 2008-2009.
- Member of the Office of Adoption and Child Protection Committee Executive Office of the Governor, appointed by Florida's Governor Charlie Crist, 2009.
- Received 10 Year Outstanding Service Award from the Board of Directors at Place of Hope, 2009.
- Received Community Champion Award from Florida Department of Children and Families, 2010.
- Received Shining Star Award from Child and Family Connections, 2010.
- Member of the Palm Healthcare Foundation Strategic Priorities - Behavioral Health Panel, 2010.
- Received American Achievement Award from the American Health Association, 2010.
- Subcommittee participant for Children and Families to Governor-Elect Rick Scott's Health and Human Services Transition Team, 2010.
- Participant of the Legislative Sub-Committee of the Community Alliance Committee, 2011.
- Received Excellence in Child Welfare Award from DCF, 2011.
- Guest presenter for Palm Beach Atlantic University on Child Abuse & Neglect, 2011.
- Jupiter Christian School Board Member, 2011-2013.
- Opened Joann's Cottage, a maternity home for young mothers and mothers-to-be, 2012.
- Board Member, Palm Beach County Food Bank, 2012-2013.
- Guest speaker on Charitable Giving for The Republican Club – Palm Beach County, 2012.
- Served on the Governor's Faith-based Adoption Initiative Core Group – Governor Rick Scott, 2012.
- Corporate Board Member, Florida Coalition for Children, 2012.
- Member, Governor Rick Scott's Transition Team for the Florida Department of Children and Families, 2012.
- Elected to Governance & Leadership's Co-Lead Role, 2012.
- Opened Hope House, Florida, the first safe house for victims of domestic minor sex trafficking in South Florida, 2012.
- Opened a southern Place of Hope Campus, Place of Hope at KidSanctuary Campus, 2012.
- Opened Treasures for Hope Charity Store, 2013.
- Opened Place of Hope at The Haven Campus in Boca Raton, 2013.
- Secured 1.25M Legislative Funds for Place of Hope at The Haven Campus, 2013.
- Awarded with Florida's Children First Children's Advocacy Award, 2013.
- Awarded with Florida's Coalition for Children Residential Caregiver of the Year Award, 2014.

Bender has been married since 1993 to his wife, Trish. Together, they are raising three beautiful children: Lauren, Emily, and Chase.

**Mary Frances Bowley
Founder, Wellspring Living**

Mary Frances Bowley is the Founder of Wellspring Living, an organization fighting childhood sexual abuse and exploitation since 2001. She has been a leader in bringing the fight against child sex-trafficking to Atlanta and is a founding member of the Governor's Task Force for CSEC Victims. Bowley was appointed to the Governor's Commission on Domestic Violence in 2010. Bowley has also received the Martin Luther King Community Service Award, AKA Humanitarian Award, the Daughters of the American Revolution (DAR) Community Service Award, the Soroptimist Ruby Award, the DDG Lifetime Achievement Award, and partner with PASSION Conferences. Mary Frances is on the Advisory Council for Shared Hope International and Abolition International. Wellspring Living, under her leadership shares their expertise with a variety of leaders and over 8 start-up non-profits interested in the issue of the sexual exploitation of children through their mentoring program. She is the author of A League of Dangerous Women and The White Umbrella. Mary Frances is married to her best friend, Dick, and has 2 sons and 3 grandsons. Dick and Mary Frances currently reside in Peachtree City, GA.



**Wellspring
Living**

**Report for
Healthy Families Subcommittee
February 19, 2014**



**Wellspring
Living**

HISTORY OF WELLSPRING LIVING

- Began serving survivors of exploitation ages 18+ in 2001
- Expanded to serve specifically survivors of DMST, ages 12-17 in 2008
- Expanded to train organizations in cities around US in 2008
- Expanded aftercare for DMST, ages 17-22 IN 2012



Wellspring
Living

PROGRAMMING

- Trauma therapy
- Evidence-based
- Trauma Informed
- Right Brain therapy



Wellspring
Living

PROGRAMMING

- Education
 - Individualized to help participants acquire grade level status using Virtual Charter School
 - On site Teacher guiding, encouraging, leading small groups
- Life skills
 - Certified for school credits
 - Trained Volunteers lead classes



Wellspring
Living

Strength-Based

We value who the participants are and the strengths they possess.

-Identify their goals while in the program



Wellspring
Living

Individualized Care

We understand that participants are unique individuals and that each has many strengths and abilities.

It is our responsibility to know participants better so that we can help them grow and meet their needs.



Wellspring
Living

Comprehensive Care

- We believe in healing MIND, BODY, and Spirit.
- It's our goal to strive with love, respect, and patience.
- Physical safety and healing habits allow for healing of the body.
- Counseling and emotional support heal the mind.
- We support individual paths toward spiritual development.



Wellspring
Living

Community

We believe that community living is an essential aspect of experiencing a healthy life.

We believe that participants need a healthy support system is essential to sustainable recovery.



Wellspring
Living

Safety

We strongly believe in providing a safe environment for all participants.

It is vital to protect the identity, physical, and psychological well-being and personal information of every participant.



SERVING SURVIVORS OF DMST - AGES: 12-17

Residential Services:

- Each girl has her own room and bathroom
- 24-7 direct care support
- Secure, safe, warm environment

Therapeutic Services:

- Weekly personal therapy, daily group therapy, and family therapy twice a month
- Evidence-Based, Strength-Based, Trauma informed



Wellspring
Living

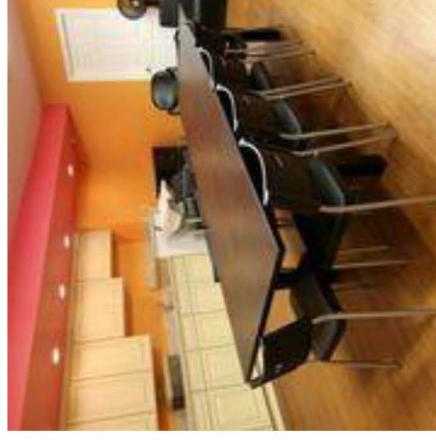
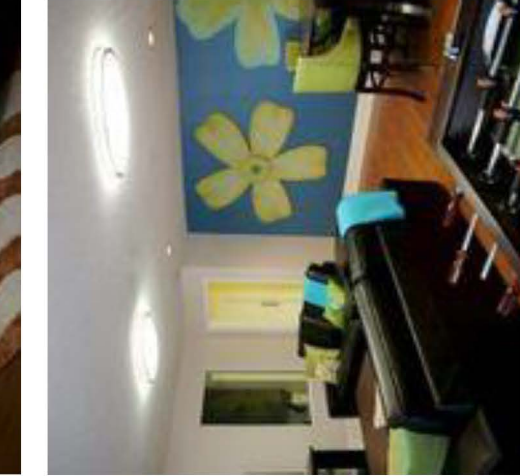
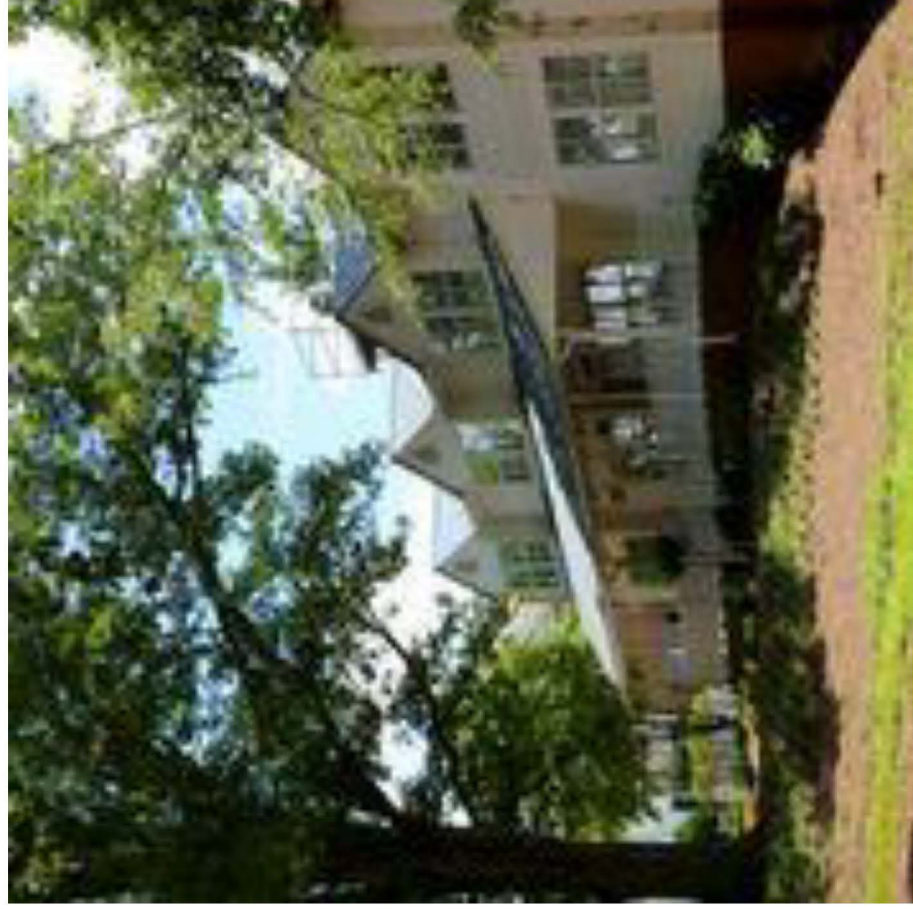
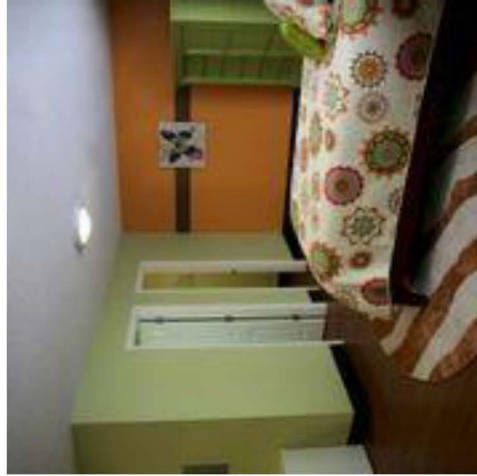
SERVING SURVIVORS OF DMST - AGES: 12-17

Life Skills and Academic Services:

- Partnered with Provost Academy
- Teachers and paraprofessionals provided in the classroom to provide a hybrid learning environment
- Vital Life Skills taught with volunteer and community support



Wellspring
Living





SERVING SURVIVORS OF DMST, AGES:17-25

- Apartment-style setting where survivors receive educational and career guidance, life skills training, therapeutic services, and community support.
- Participants move through stages that emulate real life, such as resume building, job hunting, and learning to save money.
- Services include
 - Counseling from a licensed clinician
 - Case management from a licensed social worker
 - Residential care from coaches

Our goal is to empower young women to live healthy, safe, fulfilling lives.



Wellspring
Living



EMPOWERED LIVING PROGRAM



**Wellspring
Living**

REFERRAL PROCESS

- DMST Survivors Under 18 are referred to Wellspring Living from GA Cares. Wellspring Living holds contracts with state agencies.
- DMST Survivors Over 18 are referred by partnering organizations, GBI, FBI, DAs

FACILITY REQUIREMENTS

- Wellspring Living is required to maintain a lockdown facility for survivors under the age of 18
- DMST Survivors Over 18 enter the program voluntarily, so the facility is secured, but not a lockdown facility



Wellspring
Living

FUNDING SOURCES

- **PRIVATE DONATIONS**
 - Individual
 - Foundations
 - Churches, Civic Groups, Corporations
- **RETAIL STORES**
 - 4 stores contribute 26% of our income
- **STATE FUNDING**
 - DFCS reimburses \$187.30 per day
 - DJJ reimburses \$181.84 per day



LESSONS LEARNED

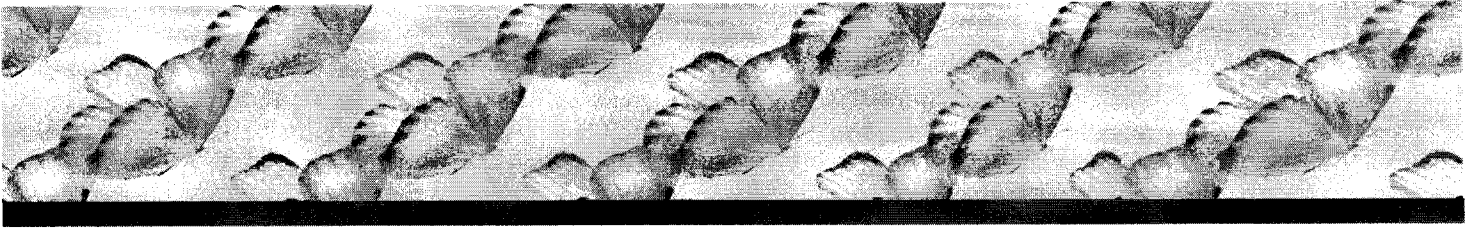
- Survivors are smart and resilient
- Recovery is a slow process
- Relapse is a part of recovery
- Survivors are deeply wounded and easily triggered. It is the hardest work you'll ever do, but by far, the most rewarding!



Wellspring
Living

RECOMMENDATIONS

- Set up a system of care with strong collaborative partners along the continuum of care.
- Involve community leaders.
- Have realistic expectations.
- Don't allow the work to become a part of your ego.
- Expect ups and downs. Don't give up!



Born and raised in Johannesburg, South Africa, and after spending over a decade in Florida, Natasha Nascimento's diverse life experience cultivated a sensitivity to acknowledge and find ways to serve others in need. After earning her Bachelor of Science degree in Interdisciplinary Social Sciences at the University of South Florida, Natasha worked as a Financial Advisor for an International investment firm in Tampa and went on to pursue her Master's Degree in Public Administration at the University of Southern California. Although her educational background and professional experience have served her well, Natasha's life passion aims to bring awareness to; and provide resources to victims of Human Trafficking.

Although the discussion of Human Trafficking is in no way regarded as a comfortable topic in any given setting, Natasha was shocked by the formerly apathetic response and failure to address Human Trafficking that takes place domestically, with research estimating that up to **300,000 American children are at risk each year to be trafficked within the borders of the United States alone**. The Tampa Bay area has been identified as a region struggling with these unfortunate issues, and statistics show that Florida is commonly known among law enforcement officials to have one of the highest rates of Human Trafficking in the country.

Recognizing the local need to develop advocacy on behalf of children without a voice, became a catalyst for Natasha to tackle what has evolved into a modern version of slavery head-on. The launch of the foundation, Redefining Refuge in 2010, has since sparked a contagious willingness from participants around the world who contribute to confronting and ultimately preventing Human Trafficking. Natasha's dream of opening a local Safe House for trafficked youth became a reality in 2013, and is the first home of its kind in the Tampa Bay area that provides a therapeutic safe haven for girls that rescued from this depravity. Connie Rose of Victims2Survivors said 'It takes someone with the drive, determination, the fortitude, the dream of 'I will build it, they will come' – this is Natasha. It is an honor to not only know Natasha, but work side by side with her to make this dream happen."

Currently, Redefining Refuge has active participants spanning from Australia, South Africa, the United Kingdom, and across the United States who share the foundation's resolve to become the beginning of an end to an unimaginable injustice, and to ignite the restoration of lives afflicted by Human Trafficking.



Safe House Therapeutic Care Program for Minor Victims of Domestic Sex Trafficking

Program Intake Requirements

Our Program is designed to serve Females aged 12-17 who:

- have been identified by DCF and/or Law Enforcement as a Minor Victim of Sex Trafficking
 - require a 24-hour structure and supportive environment, with restricted medical/psychiatric supervision
 - whose characteristics and needs are consistent with, behavioral impairment, aggressive behaviors, physical and sexual abuse victimization, severe conduct disorder, truancy or educational needs, extreme difficulty dealing with authority, and/or delinquency.
- **Redefining Refuge is mindful to extend varying degrees of flexibility in applying its admission criteria based on each child's individual history, diagnosis, current level of functioning as well as motivation for success.

Program Intake Requirements cont.

In order to ensure program effectiveness for others, the following criteria identify youth who cannot be appropriately served in our Safe House Therapeutic Program.

Youth who are:

- actively and acutely psychotic or in need of 24 hour medical/psychiatric treatment.
- actively suicidal or homicidal youth, who have a plan and the means; and for whom the program cannot provide additional measures to assure the youth's (or others) safety

Program Intake Requirements cont.

- Require detoxification from alcohol/substances, or a primary substance abuse rehabilitation program (*Huffing/Inhalant Abuse)
- Determined to have an IQ less than 70
- Have been identified as sex offenders but who are not engaged in related treatment and/or have not successfully completed treatment within a residential sex offender program
- Severely endanger other youth in the facility by active assaults and crimes
- Are beyond their first trimester of pregnancy

Staffing Patterns

- Staff to youth ratio during prime hours of 2:5 (we consider prime hours to be those (non-school) hours when youth are active and regular/frequent interventions may be needed).
- In addition to the 2:5 ratio, at least one additional staff person will be on-call and available to provide assistance within 30 minutes of a phone call.
- Key Components – On Staff Therapist, 24/7 Staff

Location/Security

- Undisclosed location on 10 acres (no on-site visitors/volunteers)
- Camera Surveillance/Fire, Police, Medical Alarm/Sensors on ALL entry/exit points

Program Intricacies

- **Phase 1 (“The Scary Part- TRUST”) 0-90 Days**
 - Establish Trust and Eliminate Stigma (Basic Needs) : Choices (Bedding, Menu, Pajamas)
 - Resident Council - This is an ongoing component of the entire program. The residents should understand there are certain expectations that they have based on their agreement to enter the Program
 - Reward System/Monthly Stipend/Basic Life Skills
 - Treatment – Medical Exam within 48 hours/Psychosocial Assessment within 72 hours
 - Treatment Plan to establish short term goals within 1 week

Program Intricacies

Phase 1 (continued)

- Therapy (Group/Creative) - Art Therapy, Drama Therapy, Music Therapy, Dance/Movement/Yoga Therapy, Self-soothing/meditations, Seeking Safety, Self Esteem Vs. Self Efficacy Groups, Social Skills Groups, Substance Abuse groups/counseling (Crisis Center)
- Therapy (Individual) - 2 to 3 times per week
- Psychoeducation Classes (Trafficking)
- Tutoring/Schooling (Homebound)/GED Classes/Scholarships

Program Intricacies

- **Phase 2 (90 days – 12/18 months)**
 - Therapy
 - Life Skills - (During this phase of life skills, the girls will spend time practicing their budget (paying a portion of their stipend towards a rent that is simply held in an account for them upon graduation).
 - Tattoo Removal/Beautification (if applicable)

Program Intricacies

➤ Phase 3 (Facing the World)

- Reintegration
- Independent Living - (each girl will be carefully assessed to determine readiness. The home will always be available as a support as they make this transition, and some can be utilized as advocates at the home if they so choose)
- Emancipation/Reunification

Other

- **Cost**
- **Runaway Policy (Triggers/Reasons for Regression)**
- **Program Strengths/Weaknesses (Group Home 24-48 hrs. versus 30 plus days prior to first incident)**

Partners/Other Services



#rescue #restore #empower



Maria Alonso, MBA

**Chief Operating Officer
Citrus Health Network, Inc.**

Maria Alonso is the Chief Operating Officer of Citrus Health Network, Inc., a federally qualified health center with extensive programs for children, families, homeless and chronically ill populations in Miami-Dade County.

Ms. Alonso was appointed by the governor to serve on The Miami-Dade Children's Trust. During her tenure, she has chaired the Procurement Committee, served on the Executive Committee, and on April 13, 2009 was elected Chair of the Board.

With 30 years experience working in the health care field, Ms. Alonso's other professional experience includes: serving on a number of state and local boards and alliances, including the Alliance for Aging; the Florida Multi-Agency Network for Severely Emotionally Disturbed Children; the Children's Services Council; South Florida Perinatal Network; the City of Miami Health Facilities Authority, and as chairman of the Republican Party of Miami-Dade County from 1988-1990.

She holds a B.S. degree in Chemistry and a M.B.A. (specialization in Health Administration) from the University of Miami.

Kimberly J. McGrath, Psy.D.
Clinical Coordinator of Foster Care Plus

Kimberly J. McGrath, Psy.D., Clinical Coordinator of Foster Care Plus. She has her B.S. from Northeastern University (1995); Psy.D., Florida Institute of Technology (2000); internship and residency, Citrus Health Network, Inc. Dr. McGrath has been responsible for all aspects of patient care within the five therapeutic programs of the Foster Care Plus program at Citrus Health Network for over 12 years. Programs include the CHANCE program (Citrus Helping Adolescents Negatively Impacted by Commercial Exploitation), Specialized Therapeutic Foster Care, Residential Group Care, and the FRAT Program (Family Refuge for Adolescents in Transition). She is responsible for the initial assessment of potential foster care clients, the facilitation of matching and placement of clients with foster families, and the coordination and supervision of continued therapeutic services. In addition, she is the founding Psychologist of the Treating Adolescents Coping with Trauma (TACT) Program at Citrus Health Network, Inc. The TACT program provides treatment services to survivors of sexual abuse and children exhibiting sexually inappropriate behavior and their families.



Citrus Helping Adolescents Negatively impacted by Commercial Exploitation

Kimberly McGrath, Psy.D.
Clinical Coordinator of Foster Care & The CHANCE Program
Citrus Health Network, Inc.

© 2014 Citrus Health Network, Inc., all rights reserved.



Why

ARE HUMAN TRAFFICKING AND CSEC IMPORTANT FL ISSUES?

Miami Herald

“13-year-old girl forced into prostitution, then nude dancing at Miami Beach strip club, police say”
January 9, 2014

CNN U.S.

“Miami is a hub for human trafficking because the city attracts travelers from around the world.” August 26, 2013

Orlando Sentinel

“Florida ranks third nationally for the number of calls to the National Human Trafficking Resource Center hotline with nearly 1,200 reports last year.”
January 25, 2014



What

IS THE



CHANCETM PROGRAM?

- Citrus Helping Adolescents Negatively impacted by Commercial Exploitation (CHANCE) is a pilot program developed by Citrus Health Network as part of a partnership with the Florida Department of Children and Families and Our Kids of Miami-Dade/Monroe, Inc., with research being conducted by the University of South Florida. The program began October 1, 2013.
- The CHANCE Program addresses the emotional and behavioral needs of teenage survivors of commercial sexual exploitation.



How

DOES THE CHANCE PROGRAM PROVIDE SERVICES?

- A key component of the CHANCE program is the commitment to continuity of care.
- Many survivors may best be served in a family environment with intense clinical services and support if they are receptive to treatment services and intervention.
- Other teens may need more intensive services delivered in a therapeutic foster home.
- Citrus Health Network developed two program tracks to meet the needs of this population:
 - CHANCE Specialized Therapeutic Foster Care (STFC)
 - CHANCE Community Response Team



What

IS CHANCE SPECIALIZED THERAPEUTIC FOSTER CARE?

- Children are placed in a stable and secure family unit that will commit to their care.
- The intervention model includes a foster parent specially trained in both the behavioral and emotional needs of this population and the unique social factors related to commercial sexual exploitation. The foster parents are available 24 hours per day, 7 days a week, to respond to crises or to the need for special therapeutic interventions.
- Foster parents are uniquely trained to deal with the special needs of this challenging population and they are an integral part of the treatment team.



What

ARE SOME COMPONENTS OF CHANCE SPECIALIZED THERAPEUTIC FOSTER CARE?

- **Single Child Home:** Victims of abuse are vulnerable to exploitation, recruitment, and manipulation by peers. The CHANCE Program requires that the CHANCE child be the only foster child placed in the home.
- **Secure Home:** The homes are secured with an advanced alarm system that will both alert the foster parent of intruders and if the child is leaving the home without permission.
- **Home Support Staff:** The program also includes the opportunity to enhance the services that the child receives in the home with the inclusion of appropriately trained Specialized Home Support Staff available 24 hours-a-day, 7 days a week.



What

IS THE CHANCE COMMUNITY RESPONSE TEAM?

- The CHANCE Community Response Team provides wraparound services to clients not in STFC.
- Likewise, once a child moves on from STFC, CHANCE services follow the child, because continuity of care is so important.
- The CHANCE team will follow the client and continue to provide services in the lower level of care (including relative and non-relative care, adoption, and reunification) as long the child continues to reside in Miami-Dade County. Services will continue until they are no longer deemed clinically indicated.



Why

DOES THE PROGRAM NEED A COMMUNITY RESPONSE TEAM?

- At this time the number of survivors of commercial sexual exploitation in Miami-Dade County exceeds the number of CHANCE STFC homes available.
- Children may reside in foster homes, shelter, group homes, or in relative and non-relative care. Some children will be in the care and custody of their parents or guardians from the onset of treatment.
- The CHANCE Community Response team will work with survivors who reside in alternative placements in an effort to stabilize them in their current environment or assist in the identification and transition of the client to an appropriate living situation.
- These children will be offered all of the same clinical services available to CHANCE STFC clients.

What

SERVICES DOES THE CHANCE PROGRAM PROVIDE?

- Children in both the CHANCE STFC and Community Response tracks are assigned the following upon entering the program:
 - **An Individual Therapist:** 2-5 times per week based on clinical necessity, on call 24/7
 - **A Family Therapist:** available when necessary
 - **A Life Coach:** 24 hour support, assistance and advocacy from a CSEC survivor
 - **A Peer Mentor**
 - **A Targeted Case Manager**
 - **Certified Behavioral Analyst Services:** as clinically indicated



What

OTHER SERVICES DOES THE CHANCE PROGRAM PROVIDE?

- Children in both the CHANCE STFC and Community Response Team tracks will receive the following wraparound services upon entering the program:
 - **Assessment and Evaluation**
 - **Individualize Treatment and Service Plan Development**
 - **24/7 On Call Clinical Staff:** For CHANCE clients and foster parents
 - **Regular Monitoring:** To ensure that the service and treatment plans goals and objectives are consistently pursued
 - **Group Therapy:** Psycho-educational groups for CSEC survivors
 - **Psychiatric Services**
 - **Substance Abuse Treatment**
 - **Primary Care Health Services**



MANY CHILDREN ARE SERVED BY THE CHANCE PROGRAM?

- Currently, there are 24 clients in the CHANCE program, between the ages of 13 and 17
 - 7 in Specialized Therapeutic Foster Care
 - 17 with the Community Response Team
- The capacity of the program, based on funding:
 - 15 in Specialized Therapeutic Foster Care
 - 40 with the Community Response Team
- The Daily Rate for the STFC program is \$210 per child per day; combined funding from Medicaid and DCF. This includes all services, and room and board.
- Currently, the majority of clients in the program are girls, but the program is designed to serve both boys and girls.



How

DO CHILDREN IN THE CHANCE PROGRAM RECEIVE EDUCATIONAL SERVICES?



- Educational settings for CHANCE Program clients are tailored to the individual needs of the child.
- Educational settings include:
 - Schools in the Community
 - Virtual School Programs
 - GED Programs
 - College

How

IS THE CHANCE PROGRAM EVALUATED?

- The University of South Florida (USF) has been contracted to evaluate the CHANCE Program.
- The evaluation will assess the appropriateness, and effectiveness of treatment interventions, fidelity to the program model, and outcomes of youth receiving the CHANCE intervention.





IS THE CHANCE PROGRAM EVALUATED?

- The fidelity assessment will examine whether services have been provided as intended, based on the specified program model.
- The outcomes evaluation will focus on youth outcomes associated with the CHANCE treatment program to assess whether functional and strengths outcomes for youth improved.
- Youth outcomes include:
 - Functioning at home, school and in the community
 - Placement stability
 - Reintegration into society
 - Conducting age appropriate activities
 - Improved emotional and behavioral functioning, including trauma symptoms.

How CAN PEOPLE HELP CSEC VICTIMS?

Become a Foster Parent!

- The number of CSEC survivors in Miami-Dade County exceeds the number of CHANCE STFC homes available.
- Citrus Health Network provides prospective foster parents with required trainings for licensing, and additional training for STFC for CSEC survivors.





Citrus Helping Adolescents Negatively impacted by Commercial Exploitation

What IS COMMERCIAL SEXUAL EXPLOITATION OF CHILDREN?

Commercial Sexual Exploitation of Children (CSEC) is a form of child abuse. It happens when individuals buy, trade, or sell sexual acts with a child under the age of 18.

Who ARE THE VICTIMS OF COMMERCIAL SEXUAL EXPLOITATION OF CHILDREN?

CSEC victims are boys and girls from different cultures, ethnicities and socioeconomic backgrounds. Any child can become a victim; however children between the ages of 12 and 15 years old, those with emotional and physical needs, runaways, and children experiencing trouble at home are particularly vulnerable.

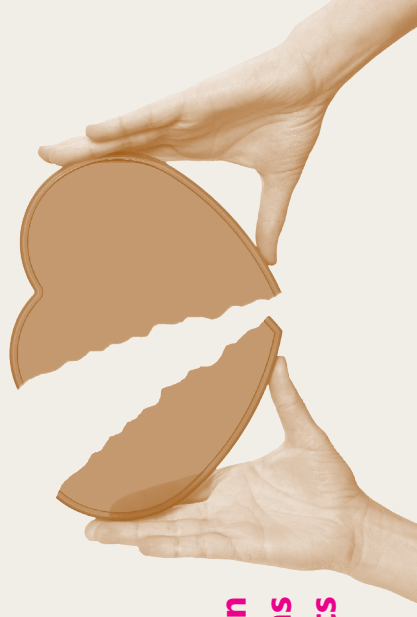
Who EXPLOITS THESE CHILDREN?

Pimps are predators who seek out vulnerable victims. They use psychological manipulation to make the child believe that the pimp truly cares for his or her well-being, as well as physical control in the form of threats, violence, or drug addiction, to make the victim feel trapped and powerless. While pimps often target children outside of their family, a family member may also sexually exploit a child.

“Johns” are the customers who solicit and purchase sexual acts performed by victims of CSEC.

If you think you know a child who may be a victim of Commercial Sexual Exploitation, call Dr. Kimberly McGrath at Citrus Health Network:

(305) 424-3031



Where ARE VICTIMS RECRUITED AND EXPLOITED?

Pimps recruit and exploit victims in various settings such as hotels, motels, bus stops, community parks, flea markets, Metrorail stations, schools, city streets, bars, restaurants, social networking websites, phone chat lines, shopping malls, group homes, and massage parlors.

Know the Signs POTENTIAL INDICATORS OF TRAFFICKING AND EXPLOITATION:

- History of emotional, sexual, or other physical abuse.
- Signs of current physical abuse and/or sexually transmitted diseases.
- History of running away or current status as a runaway
- Inexplicable appearance of expensive gifts, clothing, new cell phones, hair and nail styles, or other costly items
- Presence of an older boyfriend or girlfriend
- Substance use and drug addiction
- Withdrawal or lack of interest in previous activities
- Gang involvement



The CHANCE Program

Citrus Helping Adolescents Negatively impacted by Commercial Exploitation

What SERVICES DOES CITRUS HEALTH NETWORK PROVIDE TO VICTIMS OF COMMERCIAL SEXUAL EXPLOITATION?

Children in The CHANCE Program receive individualized clinical treatment primarily centered around Trauma-Focused Care, Cognitive Behavioral Treatment and motivational interviewing.

Citrus Health Network provides prospective foster parents with required trainings for licensing, and additional trainings for specialized therapeutic foster care for CSEC victims.

Psychoeducational group therapy is provided to both children and caregivers as part of an 16 week curriculum.



Services provided by The CHANCE Program follow the child to provide continuity of care across different settings, providers, and levels of care.

The CHANCE Program is a pilot program developed by Citrus Health Network through a partnership with the Florida Department of Children and Families and Our Kids of Miami-Dade/Monroe, with research by the University of South Florida.



©Citrus Health Network, Inc., all rights reserved.

How CAN YOU HELP? Become a Foster Parent!

1. Complete the Citrus Health Network Registration Form
2. Attend the Initial Foster Parent Orientation

3. Proceed with the Full Application and Training Process

Specialized Therapeutic Foster Homes for CSEC Victims:

Children live with foster families who have been specifically trained to care for children who have been victims of Commercial Sexual Exploitation. Specialized Therapeutic Foster Homes for CSEC require more training for foster parents, and provide more support for children and caregivers.



HEALTH NETWORK, INC.

FOSTER CARE SERVICES & LICENSING

(305) 424-3072

www.citrushealth.org

Open Your Home and Your Heart... Become a Foster Parent!

