



Pre K - 12 Appropriations Subcommittee

October 25, 2017
1:30 PM - 3:00 PM
Reed Hall

Meeting Packet

Committee Meeting Notice

HOUSE OF REPRESENTATIVES

PreK-12 Appropriations Subcommittee

Start Date and Time: Wednesday, October 25, 2017 01:30 pm
End Date and Time: Wednesday, October 25, 2017 03:30 pm
Location: Reed Hall (102 HOB)
Duration: 2.00 hrs

Jefferson County School District Fiscal Year 2017-18 Budget and Finances

Update on Fiscal Components of CS/HB 7069

NOTICE FINALIZED on 10/18/2017 4:04PM by VLS



JEFFERSON COUNTY SCHOOL DISTRICT

Fiscal Year 2017-2018
Budget and Finances



Jefferson County School District Timeline

Fiscal Year 2016-17

August 2016

Financial Emergency declared and Financial Emergency Board appointed

August 2016 -
present

Operating under the fiscal oversight of the Commissioner and Financial Emergency Board

April 2017

Contract executed with Somerset Academy, Inc.

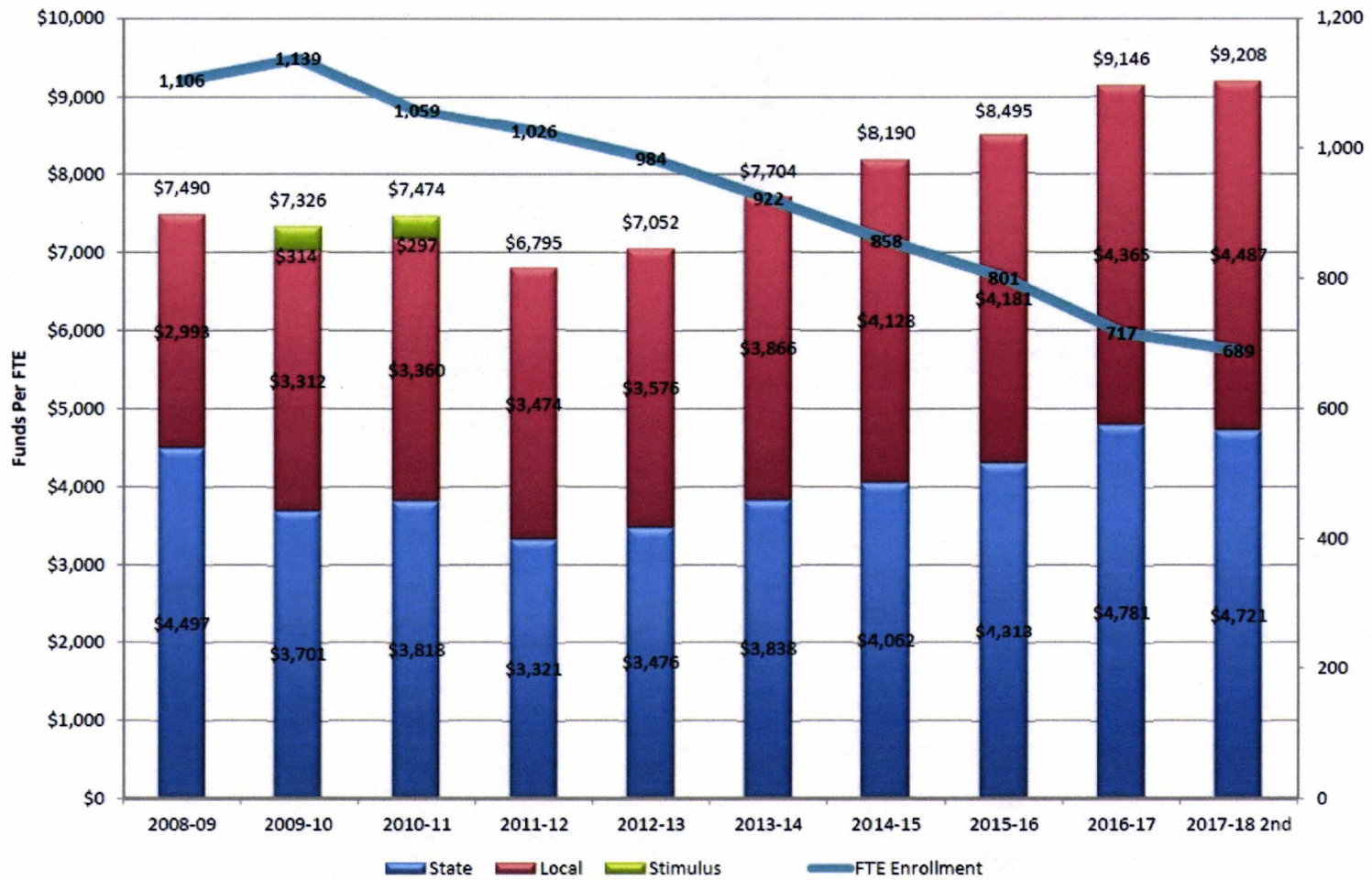
August 8,
2017

- Certified public accounting firm engaged
- Estimate 6/30/2017 General Fund assigned and unassigned fund balance (\$86,188)
- Terminal Leave payout liability \$551,565 paid with 1.5 mills revenue
- Activities related to closing out FY 2016-17 ongoing

Financial Oversight

- Commissioner, State Board of Education and Financial Emergency Board approved financial limitations for Jefferson County School Board:
 - *Commissioner must approved the District's budget and approve all expenditures except payroll as long as personnel actions have been approved*
 - *District is prohibited from issuing new debt including bonds and notes*
 - *District must permit inspection of records and assets*
 - *District much cooperate in inspection and reviews*
 - *Expenditures budgeted in capital projects funds must be postponed*
 - *No new financial obligations may be incurred unless necessary for student health, safety or welfare*
 - *District must submit monthly spending and reconciliation plans to the Department*
- Financial limitation still in effect for FY 2017-18 for the revenues and expenditures that remain with the Jefferson County School Board.

Florida Education Finance Program Funding and Enrollment History for JEFFERSON



2017-18 FEFP FEFP FUNDING SUMMARY Jefferson Cost Centers

	<u>PK-5</u>	<u>6-8</u>	<u>9-12</u>	<u>Total</u>
FTE	368.68	170.46	150.05	689.19
WFTE	396.40	171.43	170.54	738.37
Gross State and Local	<u>\$2,829,618</u>	<u>\$1,164,077</u>	<u>\$1,153,230</u>	<u>\$5,146,925</u>
RLE	\$1,451,010	\$596,931	\$591,369	\$2,639,310
Gross State	\$1,378,608	\$567,146	\$561,861	\$2,507,615
McKay Deduction	<u>\$(33,441)</u>	<u>\$(44,296)</u>	<u>\$(22,849)</u>	<u>\$(100,586)</u>
Net State	\$1,345,167	\$522,850	\$539,012	\$2,407,029
Class Size	\$441,551	\$135,552	\$125,078	\$702,181
Discretionary Lottery	<u>\$5,789</u>	<u>\$2,504</u>	<u>\$2,491</u>	<u>\$10,784</u>
Total State Funding	\$1,792,507	\$660,906	\$666,581	\$3,119,994
Discretionary Local Funding	\$243,087	\$105,129	\$104,585	\$452,801
Total Local Funding	\$1,694,097	\$702,060	\$695,954	\$3,092,111
Total Funding	<u>\$3,486,604</u>	<u>\$1,362,966</u>	<u>\$1,362,535</u>	<u>\$6,212,105</u>
Admin Fee	\$118,212	\$68,148	\$68,127	\$254,487
Total Somerset Payment	\$3,368,392	\$1,294,818	\$1,294,408	\$5,957,618

Jefferson County School District Fiscal Year 2017-2018 General Operating Fund Revenue

REVENUES	Board Adopted Budget
Local Sources	\$3,092,111
State Sources	\$3,119,994
Workforce (Higher Education Approps)	\$85,000
Other	\$463,751
<i>E-Rate Reimbursement - \$80,000</i>	
<i>RACE COM - \$223,250</i>	
<i>LIC - \$7,000</i>	
<i>Ind Somerset - \$50,000</i>	
<i>Rent - \$100,001</i>	
<i>Sale of Junk - \$1,500</i>	
<i>Adult Ed Fees - \$800</i>	
<i>GED Test Fees - \$1,200</i>	
Total Revenues	\$6,760,856

General Operating Fund Expenditures

EXPENDITURES

Board Adopted Revised Budget

District Administration	\$368,653.72
<i>Staff Salaries and Benefits - \$204,976.66</i>	
<i>Finance - \$69,075.06</i>	
<i>Electricity - Duke - \$8,000</i>	
<i>Sewer and Water - City - \$ 1,600</i>	
<i>Internet Service - \$5,400</i>	
<i>Phones - \$12,000</i>	
<i>Systems Support - \$ 20,000</i>	
<i>Prop, Casualty, and Gen Liab - \$16,322</i>	
<i>Office Supplies - \$1,200</i>	
<i>Repairs and Maintenance - \$10,000</i>	
<i>Administrative Travel - \$2,480</i>	
<i>Legal Fees - \$10,000</i>	
<i>Dues/Subscriptions - \$6,300</i>	
<i>Other - \$1,300</i>	
Workforce	\$84,784.39
Board	\$293,560.93
<i>Salary and Benefits - \$216,582.98</i>	
<i>Prof & Technical (Legal) - \$30,000</i>	
<i>Ins & Bond Premiums (Slip-n-Fall, etc) - \$20,739</i>	
<i>Travel - \$3,631.95</i>	
<i>Other Purchased Services - \$2,350</i>	
<i>Dues and Fees - \$9,257</i>	
<i>Judgments/Settlements of Litigation against School System - \$10,000</i>	
<i>Miscellaneous Expenses - \$1,000</i>	
Somerset Purchased Services	\$5,969,105
Total Expenditures	\$6,716,104.03

CS/HB 7069 Funding
DOE



FLORIDA DEPARTMENT OF
EDUCATION
fldoe.org

**HB 7069 Funding Update
Florida House of Representatives
Prek-12 Appropriations Committee**

October 25, 2017

Florida Best and Brightest Teacher Scholarship Program

- **Appropriation - \$233,950,000** (Best and Brightest Teacher Scholarship Program and the Principal Scholarship Program)
- There are three scholarships available for the 2017-2018 school year in the amount of \$6,000, \$1,200 and up to \$800.
- Each scholarship has its own eligibility requirements that districts must review and administer locally.
- **Timelines per HB 7069:**
 - December 1, 2017 - Teachers must submit their score report to the district
 - January 2, 2018 - School district shall submit the list of eligible teachers to the department
 - February 1, 2018 - Department will disburse funds to each school district
 - April 1, 2018 - Each school district will award the scholarship to each eligible teacher

Florida Best and Brightest Principal Scholarship Program

- Appropriation - \$233,950,000 (Best and Brightest Teacher Scholarship Program and the Principal Scholarship Program)
- Authorizes \$5,000 scholarship award for eligible principals at Title I schools and \$4,000 Scholarship award for eligible principals at non-Title I schools
- Eligibility Requirements:
 - Must serve as a principal at the current school for at least two consecutive years including the current year; and
 - School has a ratio of classroom teachers deemed eligible for the Best and Brightest Teacher Scholarship, to other classroom teachers, that is at the 80th percentile or higher for schools within the same grade grouping statewide.
- Timeline per HB 7069:
 - February 1 - department will identify eligible school principals and disburse funds to each district for each eligible principal.
 - April 1 - Each school district must award a scholarship to each eligible principal

Assessment Funding

- \$15 million (\$10 million in recurring funds and \$5 million in nonrecurring funds) to implement provisions related to statewide student assessments
- Assessment provisions include:
 - Grades 3-6 ELA and mathematics administered in paper based format with a process that begins with the 2017-18 school year so that all such assessments are paper-based no later than the 2018-19 school year
 - Expanded, easy-to-read and understandable report of student assessment results delivered in a timely fashion
 - Publication of ELA and Mathematics standardized assessments by June 30, 2021
 - Independent study of SAT and ACT alignment to the statewide standardized assessment in grade 10 ELA and Algebra I End of Course assessment due by January 1, 2018
 - Third-party analysis of student learning growth data calculated using the Commissioner's approved formula and a data visualization tool

Schools of Hope Funding

- \$140,000,000 - Implementation of Schools of Hope Program
 - School of Hope Operators
 - Revolving Loan Program
 - School of Hope Program awards for traditional public schools
- Schools of Hope Traditional Public Schools Program
 - Eligibility - Traditional public schools that are required to submit a school turnaround plan may apply
 - May receive up to \$2,000 per student
 - Schools must submit a plan
 - Up to 25 schools may be awarded the grant
 - 11 schools were approved by the State Board of Education
 - 57 schools applied

Schools of Hope Funding

- Schools of Hope Revolving Loan Program
 - Established to provide assistance to hope operators to meet school building construction needs and pay for expenses related to the start up of a new charter school.
 - Funds may not exceed 25 percent of the total cost of the project
 - The department may contract with a third-party to administer the program.
 - Funds not disbursed by June 30 in the year in which the funds are allocated may be carried forward for up to 5 years.

Schools of Hope Implementation

- Rule development is conducted in 2 stages
- Stage 1: Process and forms
 - July 11: Published notice of rule development
 - August-September: Developing draft rules and forms
 - October: Draft language released
 - Draft rule
 - Application for Schools of Hope operator designation
 - Notice of intent
 - Performance-based agreement
 - November 8-10: Rule development workshops
 - Rule adopted: December-January
- Stage 2: Establish State Board of Education Criteria
 - Spring 2018



www.FLDOE.org



www.FLDOE.org

Schools of Hope Grant Program FY 17-18

Item	Number of Schools
Earned School Grade of Either "D" or "F" for FY 2016-17	213
Schools Meeting Definition of Persistently Low-Performing (PLP) - 3 consecutive years of a school grade lower than "C"	90
Schools Meeting Eligibility Criteria to Apply for Schools of Hope Grant	88 (50 are PLP Schools)
Schools Applying for Schools of Hope Grant	57 (33 are PLP Schools)
School Awarded Schools of Hope Grant	11 (7 are PLP Schools)
Total Schools of Hope Grant Amount Requested	\$79.9M
Total Schools of Hope Grant Amount Awarded	\$18.1M

TRADITIONAL PUBLIC SCHOOLS EARNING GRADE OF EITHER "D" OR "F" FOR 2016-2017

All schools must execute a memorandum of understanding and implement school improvement plan and Commissioner must establish Community Assessment Team

District Name	School Number	School Name	Grade 2017	Grade 2016	Informational Baseline Grade 2015	Grade 2014	Grade 2013	Grade 2012	Grade 2011	Grade 2010	Grade 2009	Grade 2008	Grade 2007	Grade 2006	Grade 2005	Grade 2004	Grade 2003	Grade 2002	Grade 2001	Grade 2000	Grade 1999	Title I School	Percentage of Minority Students	Percentage of Economically Disadvantaged Students	Lowest 300 Elementary Schools/Reading Assessment	Persistently Low Performing School	Eligible for SOH Grant	Applied for SOH Grant	Awarded SOH Grant	Amount Requested	Amount Rewarded	Must Implement Turnaround Option Unless "C" or Higher in 2017-18	2016-17 Final FTE		
ALACHUA	0101	W. A. METCALFE ELEMENTARY SCHOOL	D	C	D	C	D	F	D	C	C	A	F	C	D	C	B	D	D	C	C	D	YES	94.0	100										308.60
ALACHUA	0201	HAWTHORNE MIDDLE/HIGH SCHOOL	D	D	D	F	F	D	C	D	D	C	F	D	D	D	C	C	A	C	C	C	YES	43.6	100										259.52
ALACHUA	0311	MYRA TERWILLIGER ELEMENTARY SCHOOL	D	D	C	D	C	D	A	A	C	A	C	D	C	D	B	A	C	A	C	C	YES	83.4	100			YES							576.05
BAY	0131	LUCILLE MOORE ELEMENTARY SCHOOL	D	D	C	F	D	C	B	C	B	A	B	A	B	C	A	B	C	C	C	D	YES	63.7	100	YES		YES	YES	YES	\$ 1,022,048	\$ 1,060,000		511.85	
BAY	0231	SPRINGFIELD ELEMENTARY SCHOOL	D	D	D	D	C	D	C	C	D	C	A	C	A	B	A	B	A	C	D	D	YES	63.9	100	YES	YES	YES	YES	YES	\$ 903,424	\$ 926,000		447.65	
BAY	0291	OSCAR PATTERSON ELEMENTARY MAGNET	F	F	D	D	F	D	C	D	C	B	B	C	B	D	C	C	C	D	D	D	YES	67.9	100	YES	YES						YES	320.93	
BRADFORD	0201	BRADFORD INTERVENTION CENTER	F																				NO	60.7	100									58.96	
BREVARD	0091	COQUINA ELEMENTARY SCHOOL	D	C	C	C	B	A	A	A	A	A	A	B	A	A	A	C	C	C	C	C	YES	44.7	82.1									520.67	
BREVARD	0101	MIMS ELEMENTARY SCHOOL	D	C	C	C	B	A	A	A	A	B	A	A	A	A	A	A	B	A	B	YES	44.0	86.5	YES									480.17	
BREVARD	1051	ENDEAVOUR ELEMENTARY SCHOOL	D	D	D	D	F	D	D	A	D	B	C	C	D	D	D	F	D	D	D	D	YES	86.0	100	YES	YES						YES	830.25	
BREVARD	1071	GOLFVIEW ELEMENTARY MAGNET SCHOOL	D	C	D	D	C	B	A	C	A	A	B	A	B	A	B	B	D	C	D	D	YES	67.4	100									593.80	
BREVARD	2051	UNIVERSITY PARK ELEMENTARY SCHOOL	D	C	D	C	D	C	B	A	B	B	C	A	B	A	A	B	C	C	C	C	YES	53.3	90.4	YES								503.49	
BREVARD	2081	PALM BAY ELEMENTARY SCHOOL	D	D	C	C	B	A	A	A	A	A	A	A	A	A	A	C	C	C	C	C	YES	53.7	86.2	YES		YES	YES	NO	\$ 1,580,000			721.70	
BROWARD	0041	NORTH SIDE ELEMENTARY SCHOOL	D	D	F	D	C	B	C	C	A	D	B	B	C	C	D	C	D	D	D	D	YES	98.1	98.9	YES	YES	YES	YES					425.11	
BROWARD	0271	DILLARD ELEMENTARY SCHOOL	D	F	F	C	D	C	B	F	A	A	C	C	A	A	A	C	D	D	F	YES	99.6	98.9	YES	YES	YES	NO	\$ 1,676,000				750.77		
BROWARD	0321	WALKER ELEMENTARY SCHOOL (MAGNET)	D	F	F	F	D	C	C	F	C	D	D	C	C	C	D	C	C	C	D	D	YES	98.5	98.8	YES	YES					YES		669.11	
BROWARD	0621	LARKDALE ELEMENTARY SCHOOL	F	C	F	F	D	C	B	D	C	D	F	C	F	C	D	C	D	D	D	D	YES	99.8	96.1	YES	YES	YES	NO	\$ 3,444,000				374.27	
BROWARD	0941	PLANTATION ELEMENTARY SCHOOL	D	C	F	F	D	C	D	C	B	C	B	C	C	D	D	D	D	D	D	D	YES	98.2	94.7	YES								593.33	
BROWARD	1191	NORTH FORK ELEMENTARY SCHOOL	D	C	F	F	D	C	D	D	C	F	B	C	B	C	C	D	D	D	F	YES	97.4	99.2	YES								417.97		
BROWARD	1611	DR. MARTIN LUTHER KING MONTESSORI ACADEMY	F	D	F	F	D	C	D	C	D	D	C	C	C	C	D	C	D	D	D	YES	98.6	98.3	YES	YES						YES	436.36		
BROWARD	1671	ROBERT C. MARKHAM ELEMENTARY	D	D	D	F	D	C	B	B	A	B	C	B	C	C	F	C	C	D	D	YES	98.4	98.1	YES	YES						YES	523.50		
CALHOUN	7023	CALHOUN VIRTUAL INSTRUCTION PROGRAM (DISTRICT PRG)	F																				NO		100			YES						11.62	
CHARLOTTE	0041	PEACE RIVER ELEMENTARY SCHOOL	D	C	C	C	C	B	A	B	B	A	A	B	A	B	A	A	B	C	C	YES	47.9	100										618.35	
COLLIER	0341	VILLAGE OAKS ELEMENTARY SCHOOL	D	D	D	F	D	C	C	C	C	C	C	B	C	C	C	D	D	D	D	YES	97.9	97.6	YES	YES						YES	537.45		
COLUMBIA	0031	RICHARDSON MIDDLE SCHOOL	D	C	C	D	F	D	C	C	C	C	C	C	C	C	D	D	N				YES	46.9	100									546.83	
DADE	0081	LENORA BRAYNON SMITH ELEMENTARY	D	C	D	C	F	F	F	F	D	C	C	F	B	C	C	D	D	D	D	YES	99.3	98.8									377.69		
DADE	0661	CARIBBEAN K-8 CENTER	D	C	D	C	F	D	C	C	D	C	C	D	C	D	D	D	D	D	D	YES	98.1	94.6									672.83		
DADE	1161	CRESTVIEW ELEMENTARY SCHOOL	D	C	C	C	D	C	C	B	C	C	A	A	A	C	A	C	C	D	D	YES	99.5	90.6									382.69		
DADE	3041	LORAH PARK ELEMENTARY SCHOOL	D	D	D	C	D	C	B	C	C	C	C	A	B	C	C	D	D	F	YES	99.8	98.5	YES	YES	YES	YES	YES	YES	\$ 798,000	\$ 798,000		398.40		
DADE	3051	TOUSSAINT L'OUVERTURE ELEMENTARY	D	D	F	D	C	B	C	A	C	C	C	C	D	C	D	D	D	D	D	YES	98.6	98.4	YES	YES	YES	YES	YES	\$ 880,000	\$ 880,000		423.85		
DADE	3181	MELROSE ELEMENTARY SCHOOL	D	C	D	C	B	A	C	C	A	I	B	B	C	B	B	C	D	F	YES	99.2	96.5	YES									435.13		
DADE	4461	PINE VILLA ELEMENTARY SCHOOL	D	C	D	B	F	D	C	C	D	C	F	D	C	C	D	C	D	D	F	YES	98.8	99.5	YES								278.21		
DADE	4961	SHADOWLAWN ELEMENTARY SCHOOL	D	B	F	C	C	B	A	C	A	C	A	B	D	D	C	D	D	F	D	YES	98.4	98.4	YES								232.68		
DADE	5791	WEST HOMESTEAD K-8 CENTER	D	D	D	D	C	B	D	D	C	F	B	D	D	D	D	D	D	D	YES	98.0	99.3		YES	YES	YES	YES	\$ 1,508,000	\$ 1,508,000		734.91			
DADE	6031	BROWNSVILLE MIDDLE SCHOOL	D	F	F	F	D	C	D	C	C	C	F	C	C	D	D	D	D	D	YES	99.6	96.8		YES	YES						YES	489.70		
DADE	6111	CUTLER BAY MIDDLE	D	C	D	D	D	C	C	C	C	C	A	C	C	B	B	C	C	C	YES	94.4	90.2										880.54		

TRADITIONAL PUBLIC SCHOOLS EARNING GRADE OF EITHER "D" OR "F" FOR 2016-2017

All schools must execute a memorandum of understanding and implement school improvement plan and Commissioner must establish Community Assessment Team

District Name	School Number	School Name	Grade 2017	Grade 2016	Informational Baseline Grade 2015	Grade 2014	Grade 2013	Grade 2012	Grade 2011	Grade 2010	Grade 2009	Grade 2008	Grade 2007	Grade 2006	Grade 2005	Grade 2004	Grade 2003	Grade 2002	Grade 2001	Grade 2000	Grade 1999	Title I School	Percentage of Minority Students	Percentage of Economically Disadvantaged Students	Lowest 300 Elementary Schools/Reading Assessment	Persistently Low Performing School	Eligible for SOH Grant	Applied for SOH Grant	Awarded SOH Grant	Amount Requested	Amount Rewarded	Must Implement Turnaround Option Unless "C" or Higher in 2017-18	2016-17 Final FTE	
DADE	6251	HOMESTEAD MIDDLE SCHOOL	D	D	D	C	D	D	C	C	B	B	D	B	C	C	C	C	D	D	D	YES	97.4	98.0		YES	YES	YES	YES	\$ 1,284,000	\$ 1,284,000		640.36	
DADE	6281	THOMAS JEFFERSON MIDDLE SCHOOL	D	C	D	C	C	C	D	C	C	C	C	C	C	C	C	D	D	D	D	YES	99.4	95.2								326.26		
DADE	7231	MIAMI CAROL CITY SENIOR HIGH	D	D	C	C	B	C	C	D	D	F	F	D	D	D	D	D	D	D	D	YES	98.8	88.8			YES	YES	YES	\$ 2,432,000	\$ 2,432,000		1,216.15	
DESOTO	0031	DESOTO COUNTY HIGH SCHOOL	D	C	B	C	C	B	D	C	D	C	D	C	C	C	D	C	C	C	C	YES	61.1	92.1								1,166.61		
DESOTO	0061	WEST ELEMENTARY SCHOOL	D	C	D	F	D	C	C	C	A	A	A	A	A	A	B	B	D	C	D	YES	51.9	100	YES							825.09		
DESOTO	0181	NOCATEE ELEMENTARY SCHOOL	D	D	F	F	D	C	B	C	C	C	C	B	A	B	B	A	C	A	C	YES	50.2	100	YES	YES						YES	629.10	
DUVAL	0741	LAKE FOREST ELEMENTARY SCHOOL	D	D	D	F	D	C	D	C	D	C	D	F	C	D	C	D	C	D	D	YES	97.5	100	YES	YES						YES	383.12	
DUVAL	0791	RAMONA BOULEVARD ELEMENTARY SCHOOL	F	C	C	D	F	D	C	A	C	C	C	C	B	C	A	C	C	D	D	YES	78.2	100	YES		YES	YES	NO	Not Submitted			461.75	
DUVAL	0911	SALLYE B. MATHIS ELEMENTARY SCHOOL	D	C	C	D	C	C	D	A	B	B	B	C	B	C	F	C	D	D	F	YES	98.0	100	YES								419.25	
DUVAL	0941	WINDY HILL ELEMENTARY SCHOOL	D	C	C	D	C	B	A	B	B	B	C	C	B	C	B	C	C	C	C	YES	80.0	100	YES								578.65	
DUVAL	0951	RUTLEDGE H. PEARSON ELEMENTARY SCHOOL	D	C	B	B	B	A	A	A	A	B	F	D	D	D	D	F	D	D	D	YES	95.7	100									273.54	
DUVAL	1061	LONG BRANCH ELEMENTARY SCHOOL	D	C	F	D	C	B	A	C	D	D	C	C	C	F	D	D	D	D	D	YES	96.0	100	YES								200.58	
DUVAL	1281	SUSIE E. TOLBERT ELEMENTARY SCHOOL	D	C	C	C	D	C	D	B	B	B	C	C	B	C	C	C	C	C	C	YES	95.2	100	YES								382.20	
DUVAL	1461	MATTHEW W. GILBERT MIDDLE SCHOOL	D	D	F	D	D	D	C	D	C	D	F	C	D	F	C	F	D	D	D	YES	94.5	100								YES	443.34	
DUVAL	1551	NORTHWESTERN MIDDLE SCHOOL	D	D	F	F	D	F	D	D	D	F	C	D	D	D	D	D	D	D	D	YES	95.7	100	YES							YES	543.76	
DUVAL	1581	GEORGE WASHINGTON CARVER ELEMENTARY	D	D	F	D	C	B	D	C	B	F	C	B	C	D	C	F	D	D	D	YES	99.3	100	YES	YES	YES	YES	NO	Not Submitted			385.18	
DUVAL	2131	ARLINGTON MIDDLE SCHOOL	D	D	D	C	C	C	B	C	C	C	C	C	C	D	C	C	C	C	C	YES	77.8	100	YES	YES	YES	YES	NO	Not Submitted			832.47	
DUVAL	2211	NORMANDY VILLAGE ELEMENTARY SCHOOL	D	C	D	D	D	D	D	B	C	C	B	C	A	C	C	B	C	C	C	YES	77.1	100	YES								375.12	
DUVAL	2401	ARLINGTON HEIGHTS ELEMENTARY SCHOOL	D	D	D	B	A	A	C	B	A	C	A	A	A	A	C	D	C	C	C	YES	77.4	100			YES	YES	NO	Not Submitted			379.40	
DUVAL	2431	GREGORY DRIVE ELEMENTARY SCHOOL	D	D	D	C	D	C	B	B	A	B	A	B	A	B	A	B	C	C	C	D	YES	82.3	100	YES	YES	YES	YES	NO	Not Submitted			761.57
ESCAMBIA	0271	ENSLEY ELEMENTARY SCHOOL	D	D	D	D	C	C	B	C	C	B	B	C	C	B	A	C	C	C	C	YES	77.4	100	YES	YES	YES						474.95	
ESCAMBIA	0361	MONTCLAIR ELEMENTARY SCHOOL	D	F	F	D	C	B	A	F	D	A	F	D	C	C	C	D	D	D	D	YES	96.9	100	YES	YES	YES	YES	NO	\$ 690,000			314.67	
ESCAMBIA	0371	MYRTLE GROVE ELEMENTARY SCHOOL	F	C	C	F	D	C	B	C	C	C	D	C	B	A	C	C	C	C	D	YES	49.8	100	YES								611.08	
ESCAMBIA	0381	NAVY POINT ELEMENTARY SCHOOL	D	C	C	F	D	C	B	C	A	F	C	C	C	B	B	D	C	C	D	YES	68.5	100	YES								571.34	
ESCAMBIA	0471	O. J. SEMMES ELEMENTARY SCHOOL	D	C	F	D	C	B	C	C	C	C	F	D	F	D	C	D	D	D	D	YES	91.5	100	YES								429.04	
ESCAMBIA	0551	WARRINGTON ELEMENTARY SCHOOL	F	F	C	F	D	D	C	C	A	C	D	C	B	A	C	C	C	D	D	YES	74.0	100	YES		YES	YES					379.78	
ESCAMBIA	0561	WARRINGTON MIDDLE SCHOOL	D	D	D	D	F	D	C	C	C	D	D	C	D	C	C	C	C	C	D	YES	81.7	100				NO	\$ 864,000		YES	680.24		
ESCAMBIA	0602	REINHARDT HOLM ELEMENTARY SCHOOL	D	D	D	D	C	D	C	C	D	B	B	C	C	C	C	C	C	C	D	YES	72.4	100	YES	YES	YES						489.94	
ESCAMBIA	0852	WOODHAM MIDDLE SCHOOL	D	D	D	C	D	C	C	C	C	C										YES	69.9	100		YES	YES					769.53		
ESCAMBIA	0862	PINE FOREST HIGH SCHOOL	D	D	C	C	C	C	D	C	D	D	C	C	C	C	C	C	C	C	C	YES	66.7	94.7			YES						1,582.41	
ESCAMBIA	1281	GLOBAL LEARNING ACADEMY	D	D	C	C	D	D														YES	89.6	100	YES		YES						739.27	
GADSDEN	0041	GEORGE W. MUNROE ELEMENTARY SCHOOL	F	D	F	D	C	B	C	F	C	C	F	D	D	C	C	D	D	D	D	YES	98.7	100	YES	YES	YES	YES	NO	\$ 1,038,000			472.74	
GADSDEN	0051	WEST GADSDEN HIGH SCHOOL	D	D	D	F	D	C	C	F	F	F	D	D	D	D	C	C	D	D	D	YES	91.4	100	YES						YES	509.83		
GADSDEN	0071	EAST GADSDEN HIGH SCHOOL	D	F	F	D	C	C	F	D	F	D	D	F								YES	97.9	100									768.08	
HAMILTON	0031	CENTRAL HAMILTON ELEMENTARY SCHOOL	F	F	D	F	D	C	F	F	F	D	F	C	D	D	C	D	D	D	D	YES	69.1	100									367.83	
HAMILTON	0032	HAMILTON COUNTY HIGH SCHOOL	D	D	D	D	F	D	C	D	F	D	D	D	D	D	D	D	D	D	D	YES	55.5	100		YES						YES	608.88	
HAMILTON	0041	NORTH HAMILTON ELEMENTARY SCHOOL	D	D	D	C	B	A	C	B	B	A	B	B	A	A	C	C	D	C	D	YES	61.6	100		YES	YES						457.99	
HAMILTON	0051	SOUTH HAMILTON ELEMENTARY SCHOOL	D	C	D	C	C	B	A	D	C	B	A	B	A	A	C	F	D	C	D	YES	45.6	100									144.18	
HARDEE	0021	HARDEE SENIOR HIGH SCHOOL	D	C	C	C	C	C	C	D	D	D	D	C	C	D	D	C	C	C	C	C	NO	70.7	99.1									1,385.67

TRADITIONAL PUBLIC SCHOOLS EARNING GRADE OF EITHER "D" OR "F" FOR 2016-2017

All schools must execute a memorandum of understanding and implement school improvement plan and Commissioner must establish Community Assessment Team

District Name	School Number	School Name	Grade 2017	Grade 2016	Informational Baseline Grade 2015	Grade 2014	Grade 2013	Grade 2012	Grade 2011	Grade 2010	Grade 2009	Grade 2008	Grade 2007	Grade 2006	Grade 2005	Grade 2004	Grade 2003	Grade 2002	Grade 2001	Grade 2000	Grade 1999	Title I School	Percentage of Minority Students	Percentage of Economically Disadvantaged Students	Lowest 300 Elementary Schools/Reading Assessment	Persistently Low Performing School	Eligible for SOH Grant	Applied for SOH Grant	Awarded SOH Grant	Amount Requested	Amount Rewarded	Must implement Turnaround Option Unless "C" or Higher in 2017-18	2016-17 Final FTE	
HENDRY	0161	WESTSIDE ELEMENTARY SCHOOL	D	C	C	B	C	C	C	B	C	B	A	B	B	B	C	C	C	C	F	YES	83.1	100									606.40	
HENDRY	0162	EASTSIDE ELEMENTARY SCHOOL	D	C	C	B	B	B	B	B	A	B	A	A	B	A	B	B	A	C	D	YES	87.4	100	YES								574.42	
HERNANDO	0271	MOTON ELEMENTARY SCHOOL	D	D	C	C	C	C	C	B	B	B	B	A	B	A	A	A	C	C	D	YES	44.2	84.0	YES	YES							636.62	
HIGHLANDS	0111	AVON PARK MIDDLE SCHOOL	D	C	C	C	D	C	C	C	C	C	C	B	C	C	B	B	C	C	C	YES	72.2	88.2									759.62	
HILLSBOROUGH	0042	FOREST HILLS ELEMENTARY SCHOOL	D	F	F	D	C	C	C	C	B	C	B	B	C	C	B	B	B	C	C	YES	84.8	94.8	YES	YES	YES	YES	NO	\$ 1,996,000			961.59	
HILLSBOROUGH	0051	SHEEHY ELEMENTARY SCHOOL	D	D	F	D	F	D	C	C	B	C	B	C	C	C						YES	97.3	96.9	YES	YES					YES	439.99		
HILLSBOROUGH	0055	SHIELDS MIDDLE SCHOOL	D	D	D	D	D	C	C	C	C	C	C	C	C	C						YES	82.4	88.3		YES	YES					1,419.84		
HILLSBOROUGH	0070	FROST ELEMENTARY SCHOOL	D	C	D	C	C	C	C	B	B	C	C	B								YES	84.0	78.1	YES	YES						595.41		
HILLSBOROUGH	0120	KIMBELL ELEMENTARY SCHOOL	D	D	F	D	C	C	C	C	C											YES	91.1	96.7	YES	YES	YES						563.13	
HILLSBOROUGH	0123	PATRICIA SULLIVAN METROPOLITAN MINISTRIES PARTNERSHIP	F	C	C																	YES	96.5	100	YES	YES	YES						114.67	
HILLSBOROUGH	0125	THOMPSON ELEMENTARY	D	D	F																	YES	78.8	83.9		YES						815.21		
HILLSBOROUGH	0322	MCLANE MIDDLE SCHOOL	D	D	C	D	D	C	C	C	D	C	C	A	C	C	B	B	A	C	B	YES	84.8	88.4		YES						728.98		
HILLSBOROUGH	0521	BRYAN ELEMENTARY SCHOOL	D	C	F	C	D	D	C	A	A	C	B	B	C	B	C	C	C	C	C	YES	90.7	94.6	YES								743.44	
HILLSBOROUGH	0641	BURNEY ELEMENTARY SCHOOL	D	C	D	C	C	B	A	B	A	C	C	C	C	C	N					YES	88.0	97.4	YES							326.35		
HILLSBOROUGH	0761	CHAMBERLAIN HIGH SCHOOL	D	D	C	C	B	A	C	D	C	D	C	C	C	C	C	C	C	C	C	YES	81.7	81.9		YES	YES	NO	\$ 2,953,587			1,664.67		
HILLSBOROUGH	0881	CLEVELAND ELEMENTARY SCHOOL	D	D	D	C	B	B	B	C	C	C	B	B	C	B	C	D	C	C	YES	91.5	97.1	YES	YES	YES	YES						372.34	
HILLSBOROUGH	1201	DOVER ELEMENTARY SCHOOL	D	D	D	C	D	C	C	B	C	B	C	B	C	C	B	C	C	C	C	YES	94.2	97.2	YES	YES	YES						676.59	
HILLSBOROUGH	1361	EDISON ELEMENTARY SCHOOL	D	F	F	D	C	D	C	C	C	C	C	F	C	N						YES	96.8	99.0	YES	YES	YES						430.51	
HILLSBOROUGH	1471	FOLSOM ELEMENTARY SCHOOL	D	D	D	C	C	C	A	B	A	B	C	B	B	A	A	D	YES	73.0	90.8	YES	YES	YES	YES								529.73	
HILLSBOROUGH	1481	FOSTER ELEMENTARY SCHOOL	D	D	D	D	C	B	C	B	C	F	C	D	C	B	C	C	D	YES	92.9	95.2	YES	YES							YES	491.68		
HILLSBOROUGH	1482	SLIGH MIDDLE SCHOOL	D	C	D	F	D	F	D	C	C	D	C	C	C	B	C	C	D	YES	92.7	95.7										503.61		
HILLSBOROUGH	1781	GRECO MIDDLE SCHOOL	D	C	C	D	D	D	C	B	C	C	B	C	B	A	A	C	B	YES	88.2	88.6										740.43		
HILLSBOROUGH	1951	IPPOLITO ELEMENTARY SCHOOL	D	C	D	D	D	C	B	C	C	C	C	B	C	C	N					YES	84.1	87.1	YES								557.09	
HILLSBOROUGH	2041	JACKSON ELEMENTARY SCHOOL	D	C	D	D	C	B	C	A	B	B	C	B	B	A	A	B	B	A	C	YES	79.3	93.9	YES								521.76	
HILLSBOROUGH	2721	MANGO ELEMENTARY SCHOOL	D	D	D	C	D	C	B	B	B	B	B	B	C	B	C	A	C	YES	73.8	92.5	YES	YES	YES								768.71	
HILLSBOROUGH	2841	MARSHALL MIDDLE SCHOOL	D	C	C	C	C	C	A	A	B	B	A	B	A	B	B	C	C	C	YES	63.8	87.5										826.99	
HILLSBOROUGH	2871	MCDONALD ELEMENTARY SCHOOL	D	D	C	C	D	C	B	A	C	C	B	D	A	B	C	C	C	C	YES	49.7	89.9	YES		YES							592.84	
HILLSBOROUGH	2882	MEMORIAL MIDDLE SCHOOL	D	D	D	D	D	C	C	B	C	B	C	B	C	B	C	D	YES	91.5	93.3				YES							644.71		
HILLSBOROUGH	3121	MORT ELEMENTARY SCHOOL	D	D	D	F	D	D	C	C	C	C	D	C	C	D	D	D	D	YES	89.1	96.6	YES	YES	YES							YES	868.80	
HILLSBOROUGH	3201	OAK PARK ELEMENTARY SCHOOL	D	D	F	D	D	C	D	C	C	D	D	D	D	D	D	F	D	D	YES	93.6	99.0	YES	YES							YES	559.93	
HILLSBOROUGH	3281	PALM RIVER ELEMENTARY SCHOOL	D	D	F	C	D	C	C	B	C	C	A	D	C	B	C	A	D	D	YES	86.4	96.0	YES	YES	YES							502.21	
HILLSBOROUGH	3381	PIZZO ELEMENTARY SCHOOL	D	D	C	C	B	A	B	B	B	C	B	B	B	A	C	C	D	YES	91.0	91.9	YES	YES	YES								757.36	
HILLSBOROUGH	3521	POTTER ELEMENTARY SCHOOL	F	F	F	F	F	D	D	C	C	F	C	F								YES	98.0	99.4	YES	YES						YES	580.55	
HILLSBOROUGH	3761	ROBLES ELEMENTARY SCHOOL	D	D	D	D	C	D	C	C	C	D	C	C	C	B	D	F	D	D	D	YES	92.8	96.3	YES	YES	YES	NO	\$ 1,752,000				794.93	
HILLSBOROUGH	3841	RUSKIN ELEMENTARY SCHOOL	D	C	F	C	D	D	C	A	A	C	B	B	C	B	A	A	D	YES	85.0	90.7	YES										901.64	
HILLSBOROUGH	4201	SULPHUR SPRINGS K-8 SCHOOL	D	D	F	C	D	D	C	B	F	F	C	C	C	C	D	D	D	YES	95.0	98.8		YES	YES								678.07	
HILLSBOROUGH	4361	THONOTOSASSA ELEMENTARY SCHOOL	D	C	D	C	D	C	B	B	C	B	B	B	B	B	B	C	A	C	C	YES	57.5	92.2	YES								339.23	
HILLSBOROUGH	4601	WASHINGTON ELEMENTARY SCHOOL	F	F	F	D	F	D	C	F	D	C	D	D				A	A	C	A	YES	96.4	98.8	YES	YES					YES	495.56		
HILLSBOROUGH	4747	JAMES ELEMENTARY SCHOOL	D	D	D	C	D	C	D	C	B	C	D	C	D							YES	96.6	97.5	YES	YES	YES						670.33	
INDIAN RIVER	0271	OSLO MIDDLE SCHOOL	D	C	C	C	C	C	B	A	A	A	B	A	B	C	B	B	C	A	C	YES	53.8	77.0										806.28

TRADITIONAL PUBLIC SCHOOLS EARNING GRADE OF EITHER "D" OR "F" FOR 2016-2017

All schools must execute a memorandum of understanding and implement school improvement plan and Commissioner must establish Community Assessment Team

District Name	School Number	School Name	Grade 2017	Grade 2016	Informational Baseline Grade 2015	Grade 2014	Grade 2013	Grade 2012	Grade 2011	Grade 2010	Grade 2009	Grade 2008	Grade 2007	Grade 2006	Grade 2005	Grade 2004	Grade 2003	Grade 2002	Grade 2001	Grade 2000	Grade 1999	Title I School	Percentage of Minority Students	Percentage of Economically Disadvantaged Students	Lowest 300 Elementary Schools/Reading Assessment	Persistently Low Performing School	Eligible for SOH Grant	Applied for SOH Grant	Awarded SOH Grant	Amount Requested	Amount Rewarded	Must Implement Turnaround Option Unless "C" or Higher in 2017-18	2016-17 Final FTE		
JEFFERSON	0021	JEFFERSON COUNTY MIDDLE/HIGH SCHOOL	D	D	F	D	F	F	D	D	F	I	D	F	D	F	C	F	C	C	D	YES	84.3	100									297.25		
JEFFERSON	0111	JEFFERSON COUNTY ELEMENTARY SCHOOL	D	D	F	D	F	F	D	F	C	C	C	F	C	C	C	F	C	C	C	YES	84.9	100	YES								375.12		
LEE	0162	RAY V. POTTORF ELEMENTARY SCHOOL	D	C	D	D	C	C	C	C	B	B	B	B	B	B	B	C	C	C	C	YES	87.4	100	YES								703.99		
LEE	0381	TICE ELEMENTARY SCHOOL	D	C	C	B	C	D	C	B	B	C	C	B	B	B	C	C	C	C	C	YES	94.8	100	YES								548.81		
LEE	0631	SAN CARLOS PARK ELEMENTARY SCHOOL	D	C	B	B	C	C	B	A	A	A	A	A	A	B	A	B	C	C	C	YES	63.6	96.9	YES								985.38		
LEE	0745	EAST LEE COUNTY HIGH SCHOOL	D	D	D	C	D	D	D	C	D	D	C	C	C								YES	83.4	100		YES	YES	YES	NO	\$ 4,068,000		1,951.96		
LEE	0763	MANATEE ELEMENTARY SCHOOL	D	F	D	F	D	C	B	B	C	B										YES	88.7	100	YES	YES							949.55		
LEON	0171	OAK RIDGE ELEMENTARY SCHOOL	D	D	F	C	D	C	B	C	A	C	C	C	D	C	C	C	C	C	D	YES	92.5	100	YES	YES	YES							518.27	
LEON	0231	JOHN G RILEY ELEMENTARY SCHOOL	D	C	D	D	C	C	B	C	A	B	C	B	C	C	B	D				YES	94.2	100	YES								605.44		
LIBERTY	0071	LIBERTY LEARNING CENTER	F																			NO				YES							6.19		
MADISON	0041	MADISON COUNTY CENTRAL SCHOOL	D	D	D	D	F	D	D	D	C	D	D	C	D	C	C	N				YES	76.4	100	YES								YES	1,039.29	
MANATEE	0051	BALLARD ELEMENTARY SCHOOL	D	C	C	C	D	C	B	C	A	B	B	A	A	A	C	B	B	C	C	YES	75.3	100	YES									486.77	
MANATEE	0061	BAYSHORE ELEMENTARY SCHOOL	D	C	D	C	D	C	B	C	B	B	C	C	C	A	B	B	C	B	A	YES	68.2	100	YES									779.74	
MANATEE	0261	ONECO ELEMENTARY SCHOOL	D	D	D	B	D	C	B	B	C	C	C	C	C	B	C	C	C	C	C	YES	79.0	100	YES	YES	YES	YES	NO	\$ 1,308,000				617.81	
MANATEE	0271	G D ROGERS GARDEN- BULLOCK ELEMENTARY	D	D	F	D	F	D	C	D	B	C	C	C	C	B	B	A	C	C	D	NO	90.8	100	YES	YES							YES	573.39	
MANATEE	0281	PALM VIEW ELEMENTARY SCHOOL	D	C	F	D	F	D	C	B	B	B	C	B	B	B	B	C	A	C	YES	72.4	100	YES										365.94	
MANATEE	0381	ROBERT H. PRINE ELEMENTARY SCHOOL	D	C	D	C	C	B	A	C	A	A	A	A	A	B	A	A	C	A	C	YES	69.7	100	YES									799.95	
MANATEE	0411	BLANCHE H. DAUGHTREY ELEMENTARY	D	D	D	C	F	F	D	C	A	A	A	A	B	A	B	C	C	C	C	YES	92.5	100	YES	YES	YES	YES	NO	\$ 1,604,000				787.52	
MANATEE	0581	W. D. SUGG MIDDLE SCHOOL	D	D	D	F	D	C	B	C	A	A	B	A	B	A	C	B	B	C	YES	66.7	100	YES	YES							YES	691.70		
MANATEE	0761	ELECTA LEE MAGNET MIDDLE SCHOOL	D	C	C	C	C	C	B	B	B	B	B	A	C	B	B	B	N			YES	68.8	99.7										1,075.74	
MARION	0341	OAKCREST ELEMENTARY SCHOOL	D	D	D	D	C	C	B	C	A	A	A	C	C	C	C	C	D	D	C	YES	75.4	100	YES	YES	YES	YES	NO	\$ 1,342,000				660.19	
MARION	0431	WYOMINA PARK ELEMENTARY SCHOOL	F	D	C	C	B	A	A	A	A	A	B	A	B	B	C	D	C	C	D	YES	62.4	100	YES		YES	YES	NO	\$ 1,424,000				671.42	
MARION	0581	EVERGREEN ELEMENTARY SCHOOL	D	F	D	F	D	C	C	F	B	C	A	C	C	A	C	C	C	D	YES	76.7	100	YES	YES							YES	530.16		
MARION	0671	GREENWAY ELEMENTARY SCHOOL	D	C	C	C	D	C	C	C	B	B	A	A	A	A	B	B	B	C	D	YES	61.9	100	YES									695.14	
MARION	9401	MARION TECHNICAL INSTITUTE	D																			NO	39.0	56.6										208.23	
ORANGE	0151	MEMORIAL MIDDLE	D	D	D	D	C	C	C	C	D	D	D	C	C	D	C	D	D	D	D	YES	98.4	100		YES	YES	YES	NO	\$ 1,654,000					821.74
ORANGE	0401	PINEWOOD ELEMENTARY	D	C	D	D	D	C	B	B	C	B	C	C	C	B	C	B	C	D	D	YES	97.9	100	YES									563.33	
ORANGE	0421	LOCKHART ELEMENTARY	D	D	C	C	C	B	A	C	A	A	C	A	A	B	C	D	C	D	C	YES	80.8	100	YES			YES	YES	NO	\$ 1,036,000				482.39
ORANGE	0651	LAKE WESTON ELEMENTARY	D	F	D	C	C	B	A	B	B	C	D	B	C	C	D	D	D	D	D	YES	94.2	100	YES	YES	YES	YES	NO	\$ 1,136,000					534.75
ORANGE	0671	MAYNARD EVANS HIGH	D	C	C	C	B	B	C	D	D	D	F	F	D	F	D	F	D	D	D	YES	98.1	100										2,365.20	
ORANGE	0691	OAK RIDGE HIGH	D	C	C	C	B	C	D	D	D	D	F	D	F	F	D	F	D	D	D	YES	94.8	100										2,789.98	
ORANGE	0701	CATALINA ELEMENTARY	D	D	C	C	D	D	B	D	C	C	B	D	D	C	F	D	D	D	D	YES	98.3	100	YES		YES	YES	NO	\$ 1,480,000					713.01
ORANGE	0741	CYPRESS PARK ELEMENTARY	D	C	C	C	F	D	C	C	B	D	C	B	A	B	A	C	C	C	D	YES	78.5	100	YES									284.37	
ORANGE	0811	TANGELO PARK ELEMENTARY	D	D	D	C	B	A	A	A	A	B	A	C	A	C	C	D	C	D	D	YES	91.6	100	YES	YES	YES	YES	NO	\$ 1,176,000					561.10
ORANGE	1271	ROSEMONT ELEMENTARY	D	D	D	C	C	B	A	A	D	C	C	D	B	B	C	C	C	D	D	YES	97.3	100	YES	YES	YES	YES	NO	\$ 1,648,000					792.15
ORANGE	1431	RIDGEWOOD PARK ELEMENTARY	D	C	D	D	C	B	D	C	A	C	C	B	B	B	C	C	D	D	D	YES	97.3	100	YES									707.82	
ORANGE	5711	JONES HIGH	D	C	C	C	B	C	C	B	D	D	D	F	F	F	F	F	F	D	D	YES	98.9	100										1,281.57	

TRADITIONAL PUBLIC SCHOOLS EARNING GRADE OF EITHER "D" OR "F" FOR 2016-2017

All schools must execute a memorandum of understanding and implement school improvement plan and Commissioner must establish Community Assessment Team

District Name	School Number	School Name	Grade 2017	Grade 2016	Informational Baseline Grade 2015	Grade 2014	Grade 2013	Grade 2012	Grade 2011	Grade 2010	Grade 2009	Grade 2008	Grade 2007	Grade 2006	Grade 2005	Grade 2004	Grade 2003	Grade 2002	Grade 2001	Grade 2000	Grade 1999	Title 1 School	Percentage of Minority Students	Percentage of Economically Disadvantaged Students	Lowest 300 Elementary Schools/Reading Assessment	Persistently Low Performing School	Eligible for SOH Grant	Applied for SOH Grant	Awarded SOH Grant	Amount Requested	Amount Rewarded	Must Implement Turnaround Option Unless "C" or Higher in 2017-18	2016-17 Final FTE		
PALM BEACH	0201	JOHN F. KENNEDY MIDDLE SCHOOL	D	C	C	F	D	C	C	C	C	D	D	C	D	D	D	D	D	D	D	D	YES	96.2	94.9								793.13		
PALM BEACH	0271	NORTHMORE ELEMENTARY SCHOOL	D	C	F	F	D	D	C	B	A	C	A	B	B	C	C	D	D	D	D	D	YES	96.5	97.2	YES							467.98		
PALM BEACH	0691	LAKE WORTH HIGH SCHOOL	D	C	C	B	A	B	B	A	D	C	C	C	D	C	C	C	C	C	C	C	YES	90.7	88.3								2,618.24		
PALM BEACH	0741	BARTON ELEMENTARY SCHOOL	D	C	D	B	C	D	D	C	C	B	A	B	C	D	D	D	D	D	D	F	YES	94.8	98.6	YES							907.46		
PALM BEACH	0842	TURNING POINTS ACADEMY	F									I											YES	96.0	91.0								74.49		
PALM BEACH	1232	LAKE SHORE MIDDLE SCHOOL	D	C	F	F	D	C	C	C	C	D	C	D	C	C	D	D	D	D	D	D	YES	99.2	96.6								665.04		
PALM BEACH	1241	GOVE ELEMENTARY SCHOOL	D	D	D	C	B	A	C	C	A	C	A	A	A	A	A	C	D	D	D	D	YES	96.4	97.2	YES	YES	YES	YES	\$ 1,496,000	\$ 1,496,000		725.74		
PALM BEACH	1401	WEST RIVIERA ELEMENTARY SCHOOL	D	D	F	D	C	C	D	F	B	C	D	C	D	C	F	D	D	D	F		YES	99.3	97.2	YES	YES	YES	YES	\$ 1,502,000	\$ 1,502,000		682.86		
PALM BEACH	1641	GOLD COAST COMMUNITY SCHOOL	F	F	F							F	P	P	F	P							YES	91.1	89.1								84.41		
PALM BEACH	1851	PALM BEACH LAKES HIGH SCHOOL	D	D	C	C	C	C	C	C	D	C	D	C	C	D	C	D	D	D	D	D	YES	95.6	81.3			YES	YES	YES	\$ 4,608,000	\$ 4,608,000		2,252.36	
PALM BEACH	2431	SOUTH GRADE ELEMENTARY SCHOOL	D	C	D	D	C	C	C	B	A	C	A	B	A	B	B	D	N				YES	96.1	98.6	YES							794.13		
PALM BEACH	3044	NORTH AREA ELEMENTARY TRANSITION SCHOOL	F	F	F																		YES				YES	YES						2.96	
PALM BEACH	3101	CROSSROADS ACADEMY	F	F	F		F					F	P	P									YES	99.3	93.9			YES					112.60		
PALM BEACH	3355	RIVIERA BEACH PREPARATORY & ACHIEVEMENT ACADEMY	F	F	F																		YES	97.9	94.9	YES							89.59		
PASCO	0091	WEST ZEPHYRHILLS ELEMENTARY SCHOOL	D	D	C	D	C	B	A	A	A	B	C	C	B	B	A	C	B	A	C	YES	40.3	85.3	YES		YES						865.56		
PASCO	0931	RIDGEWOOD HIGH SCHOOL	D	D	C	C	C	B	B	C	D	D	D	C	C	C	C	C	C	C	C	C	YES	38.3	79.4		YES							992.89	
PINELLAS	0121	AZALEA MIDDLE SCHOOL	F	D	D	F	F	F	D	C	C	C	C	B	C	C	B	B	C	C	C	C	YES	65.5	100		YES						YES	1,004.33	
PINELLAS	0141	LARGO MIDDLE SCHOOL	D	D	C	D	D	C	B	B	A	B	A	A	B	A	A	C	C	C	C	C	YES	55.0	100			YES	YES	NO	\$ 1,568,000			777.03	
PINELLAS	1211	FAIRMOUNT PARK ELEMENTARY SCHOOL	F	D	F	F	F	D	D	F	C	B	A	C	B	C	B	C	C	A	C	YES	89.1	100	YES	YES							YES	531.00	
PINELLAS	1261	JOHN M. SEXTON ELEMENTARY SCHOOL	D	C	C	C	C	B	A	B	A	B	A	B	A	B	C	C	C	C	C	YES	46.7	100	YES									644.70	
PINELLAS	2021	LAKEWOOD ELEMENTARY SCHOOL	D	D	F	D	C	D	F	C	B	C	B	C	C	C	D	C	D	C	C	YES	86.6	100	YES	YES							YES	445.98	
PINELLAS	2281	MAXIMO ELEMENTARY SCHOOL	D	C	F	F	F	F	D	B	B	C	C	C	B	C	B	C	A	C	YES	92.2	100	YES										407.66	
PINELLAS	2431	MILDRED HELMS ELEMENTARY SCHOOL	D	D	C	C	D	C	A	A	A	B	A	A	A	A	B	A	B	A	B	YES	46.9	100	YES		YES	YES	NO	\$ 1,244,000			592.33		
PINELLAS	3871	SANDY LANE ELEMENTARY SCHOOL	D	C	F	D	D	C	D	D	C	C	A	B	B	B	B	C	C	A	C	YES	78.6	100	YES									432.20	
PINELLAS	4561	MIDTOWN ACADEMY	F																				NO	94.4	100			YES	YES	NO	\$ 584,000			306.88	
POLK	0101	CRYSTAL LAKE ELEMENTARY SCHOOL	D	D	F	D	C	B	A	C	C	C	B	C	C	C	C	D	C	C	D	YES	69.2	100	YES	YES	YES	YES	NO	\$ 1,114,000				514.65	
POLK	0601	FRED G. GARNER ELEMENTARY SCHOOL	F	F	D	D	F	D	C	C	C	C	C	B	B	B	A	C	C	D	D	YES	78.2	100	YES	YES							YES	642.23	
POLK	0821	JERE L. STAMBAUGH MIDDLE	D	D	C	D	D	C	C	C	B	C	B	C	B	C	C	C	C	C	C	YES	48.5	96.3			YES	YES	NO	\$ 1,690,000				830.18	
POLK	0851	AUBURNDALE CENTRAL ELEMENTARY SCHOOL	D	F	D	D	C	D	C	D	C	B	C	B	C	B	C	A	C	F	YES	58.9	100	YES	YES	YES	YES	NO	\$ 838,000					383.76	
POLK	0861	WALTER CALDWELL ELEMENTARY SCHOOL	D	D	D	D	C	B	D	C	A	A	A	A	A	B	A	B	C	A	C	YES	53.1	100	YES	YES	YES	YES	NO	\$ 1,360,000				660.80	
POLK	0931	BARTOW MIDDLE SCHOOL	D	D	D	D	F	D	C	C	C	B	C	B	C	B	C	C	C	C	C	YES	54.8	91.4	YES		YES						YES	860.84	
POLK	0981	GIBBONS STREET ELEMENTARY SCHOOL	D	D	D	C	D	C	B	C	B	A	A	C	B	A	A	C	D	C	C	YES	69.1	100	YES	YES	YES	YES	NO	\$ 556,000				247.86	
POLK	1032	CITRUS RIDGE A CIVICS ACADEMY	D																				NO	68.7	83.4									1,505.07	
POLK	1051	TENOROC HIGH SCHOOL	D	C	C	D	C	D	D	D													YES	48.8	85.7									1,132.57	
POLK	1131	MULBERRY SENIOR HIGH SCHOOL	D	D	C	C	C	B	D	C	C	C	C	C	C	C	C	C	C	C	C	C	YES	52.9	69.4			YES	YES	NO	\$ 2,108,000				1,025.54
POLK	1181	KATHLEEN SENIOR HIGH SCHOOL	D	D	C	C	C	D	C	D	C	D	D	D	D	C	D	C	D	C	C	D	YES	58.5	76.6			YES	YES	NO	\$ 4,304,000				2,078.13
POLK	1191	KATHLEEN MIDDLE SCHOOL	D	D	F	D	D	D	C	C	B	B	C	B	C	C	B	C	C	C	C	YES	53.1	100		YES							YES	626.93	
POLK	1221	KATHLEEN ELEMENTARY SCHOOL	D	C	D	C	B	A	C	C	A	B	A	B	A	B	A	A	C	C	YES	49.5	100	YES										555.61	
POLK	1231	GRIFFIN ELEMENTARY SCHOOL	F	F	D	D	F	D	C	A	A	B	A	B	A	B	A	A	C	C	D	YES	68.9	100	YES	YES							YES	435.97	
POLK	1341	MCLAUGHLIN MIDDLE SCHOOL AND FINE ARTS ACADEMY	F	F	C	D	F	D	C	C	B	C	B	C	B	C	B	C	C	C	C	YES	65.3	100			YES	YES	NO	\$ 1,678,000					793.62
POLK	1371	SPOOK HILL ELEMENTARY SCHOOL	D	C	D	C	B	B	B	A	A	A	A	A	C	B	C	C	C	C	C	YES	60.6	100	YES										628.39
POLK	1662	LAKE ALFRED-ADDAIR MIDDLE SCHOOL	D	D	F	F	F	F	D	C	C	C	D										YES	73.2	99.2	YES								YES	624.58

TRADITIONAL PUBLIC SCHOOLS EARNING GRADE OF EITHER "D" OR "F" FOR 2016-2017

All schools must execute a memorandum of understanding and implement school improvement plan and Commissioner must establish Community Assessment Team

District Name	School Number	School Name	Grade 2017	Grade 2016	Informational Baseline Grade 2015	Grade 2014	Grade 2013	Grade 2012	Grade 2011	Grade 2010	Grade 2009	Grade 2008	Grade 2007	Grade 2006	Grade 2005	Grade 2004	Grade 2003	Grade 2002	Grade 2001	Grade 2000	Grade 1999	Title I School	Percentage of Minority Students	Percentage of Economically Disadvantaged Students	Lowest 300 Elementary Schools/Reading Assessment	Persistently Low Performing School	Eligible for SOH Grant	Applied for SOH Grant	Awarded SOH Grant	Amount Requested	Amount Rewarded	Must Implement Turnaround Option Unless "C" or Higher in 2017-18	2016-17 Final FTE
POLK	1831	LAKE MARION CREEK MIDDLE SCHOOL	D	D	F	D	D	C	C	C	A	C	D									YES	90.9	100		YES							958.94
PUTNAM	0041	C. L. OVERTURF JR 6TH GRADE CENTER	D	C	C	C	F	D	D	D	C	C	C	B	C	C	C	C	C	C	C	YES	47.7	100									382.18
PUTNAM	0091	MELLON ELEMENTARY SCHOOL	D	D	F	D	C	B	A	D	A	B	C	C	C	B	B	C	C	C	C	D	YES	73.5	100	YES	YES	YES	NO	\$ 616,000			301.10
PUTNAM	0112	INTERLACHEN HIGH SCHOOL	D	D	C	C	C	B	D	D	D	C	C	C	C	C	C	C	C	C	C	D	YES	27.4	100		YES	YES	NO	\$ 1,424,000			700.79
PUTNAM	0113	C. H. PRICE MIDDLE SCHOOL	D	D	C	C	D	C	C	C	B	B	C	B	C	B	B	C	C	C	C	C	YES	33.1	100		YES	YES	NO	\$ 1,284,000			627.25
PUTNAM	0171	ROBERT H. JENKINS, JUNIOR MIDDLE	D	F	D	D	C	C	B	B	B	B	C	B	B	C	B	C	C	C	C	C	YES	54.2	100	YES	YES	YES	NO	\$ 1,020,000			501.11
PUTNAM	0211	BROWNING-PEARCE ELEMENTARY SCHOOL	D	C	C	C	C	B	A	C	B	C	A	B	B	B	A	C	C	C	D	YES	40.1	100								711.90	
PUTNAM	0231	GEORGE C. MILLER JR. MIDDLE SCHOOL	D	D	D	D	C	B	C	C	B	C	C	C	B	B	C	C	D	F	D	YES	68.0	100	YES	YES	YES	NO	\$ 974,000			477.84	
PUTNAM	0251	MIDDLETON-BURNEY ELEMENTARY SCHOOL	D	C	D																	YES	74.7	100	YES							941.41	
PUTNAM	0351	WILLIAM D. MOSELEY ELEMENTARY SCHOOL	F	D	F	D	F	F	D	D	C	C	C	C	B	B	A	N				YES	83.3	100	YES	YES						YES	490.85
ST. LUCIE	0040	WEATHERBEE ELEMENTARY SCHOOL	D	D	C	C	D	C	B	A	C	B	F	B	C	B	B	C	C	A	C	YES	79.1	100	YES	YES	YES	NO	\$ 1,478,000				697.90
ST. LUCIE	0071	ST. LUCIE ELEMENTARY SCHOOL	D	F	F	D	C	B	A	C	C	C	D	B	C	A	B	B	C	D	YES	93.3	100	YES	YES	YES	NO	\$ 1,456,000					711.12
ST. LUCIE	0141	SAMUEL S. GAINES ACADEMY K-8	D	C	D	F	F	D	C	C	C	D										YES	89.7	100								1,306.76	
SEMINOLE	0141	PINE CREST ELEMENTARY SCHOOL	D	F	D	D	D	C	B	B	A	C	B	C	C	B	B	B	D	C	D	YES	72.0	92.4	YES	YES						YES	735.40
SEMINOLE	0521	IDYLLWILDE ELEMENTARY SCHOOL	D	D	C	D	C	B	A	B	A	A	A	D	C	A	A	C	C	C	D	YES	81.7	83.9	YES	YES	YES	YES	\$ 1,648,000	\$ 1,648,000			819.97
VOLUSIA	0621	BLUE LAKE ELEMENTARY SCHOOL	D	D	C	D	C	B	A	A	A	B	A	C	A	A	A	B	A	A	D	YES	61.5	85.7	YES	YES	YES	NO	\$ 1,312,000				647.35
VOLUSIA	2451	PALM TERRACE ELEMENTARY SCHOOL	D	D	C	C	D	C	B	C	B	C	C	B	C	B	B	C	D	C	F	YES	82.4	94.6	YES	YES	YES	NO	\$ 1,440,000				694.55
VOLUSIA	6234	SOUTH DAYTONA ELEMENTARY SCHOOL	D	C	C	B	D	C	B	A	A	B	A	B	A	A	A	A	A	C	C	YES	47.7	82.0									869.57
WALTON	0281	MAUDE SAUNDERS ELEMENTARY SCHOOL	D	C	D	C	C	B	A	B	B	B	B	B	B	A	A	B	C	C	D	YES	34.9	88.1	YES								667.57
																										\$ 79,999,059	\$ 18,142,000						

213 Schools

NOTES:
 District 20 (Gadsden) School 0051 (formerly West Gadsden High School) is renamed to "Gadsden County High School." The grade history reflects West Gadsden's history, since the new consolidated school retained that school number.
 District 20 (Gadsden) School 0071. East Gadsden High School's school number is no longer active.
 District 24 (Hamilton) School 0041 (formerly North Hamilton Elementary School) is renamed to "Hamilton County Elementary School." The grade history reflects North Hamilton's history, since the new consolidated school retained that school number.
 District 24 (Hamilton) School 0031. Central Hamilton Elementary School's school number is no longer active.
 District 33 (Jefferson) School 0021. Jefferson Middle/High School's school number is now attached to Jefferson County Middle/Somerset and is now a charter school.
 District 33 (Jefferson) School 0111. Jefferson County Elementary is now a charter school.
 District 50 (Palm Beach) School 1641. Gold Coast Community School is closed, per the MSID file.

STEP UP FOR STUDENTS

Helping public education fulfill the promise of equal opportunity

House PreK-12 Appropriations
Subcommittee

October 25, 2017

Sara Clements

Director of External Affairs

Amy Graham

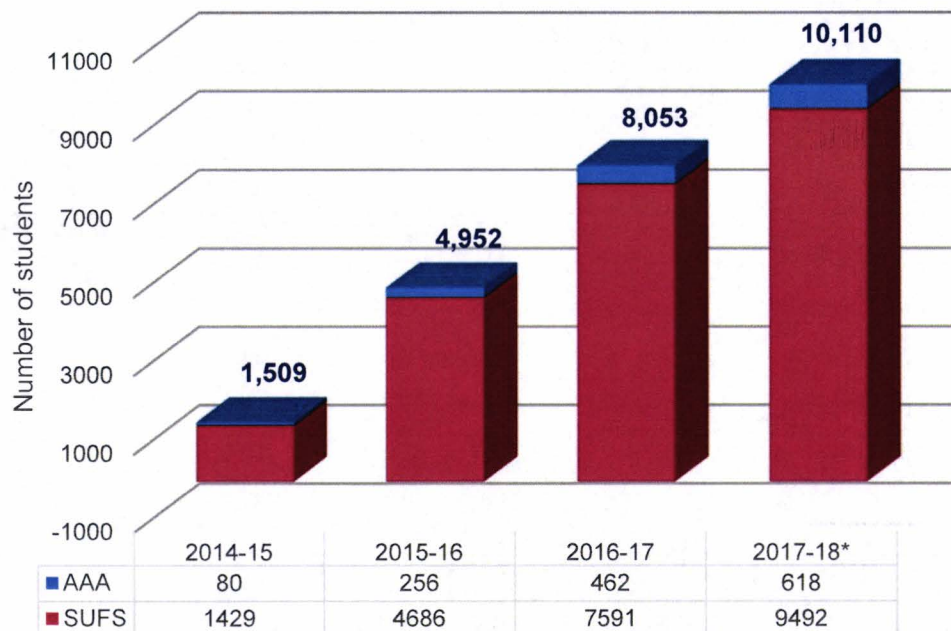
Senior Director of Policy



Gardiner Scholarship Program

- Passed in 2014 and implemented immediately for the 2014-15 school year.
- Program served 1,509 students in the first year, and has seen increased demand and rapid growth every year.

Program Growth



*Funded through September 2017

- GAA allocates the total annual scholarship funds.
- Unused scholarship funds roll over annually.
- In 2017-18, we anticipate that all of the allocated scholarship funds and rollover funds for the program will be utilized.



Funding for Gardiner Scholarships

- Funding for each scholarship is based on 90 percent of the student's matrix level of services or 90 percent of the 253 matrix level for renewal students and students without a matrix.
- Average scholarship in 2016-17 was about \$10,400.
- Funding is prorated based on date student is found eligible by the scholarship funding organization.
 - On or before September 1 = 100%
 - On or before November 1 = 75%
 - On or before February 1 = 50%
 - On or before April 1 = 25%
- Students continue to be funded throughout the year until April 1, as long as there are scholarship funds remaining.



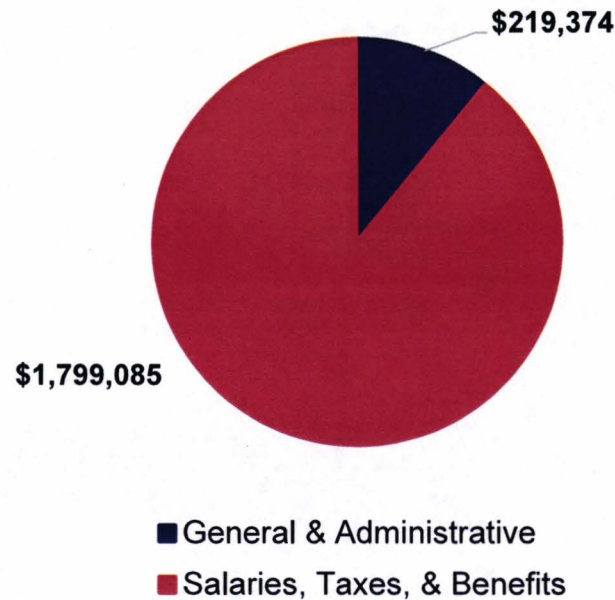
Administrative Duties

- Review student applications for eligibility.
- Answer calls, emails and chats from current and prospective parents and providers.
- Communicate with parents during the eligibility and funding process.
- Email and call new parents to explain the authorized uses of funds.
- Create and maintain Parent Handbook in English and Spanish.
- Set up providers and confirm a valid license at the time of each expense.
- Process reimbursements by reviewing invoices and verifying expenditures.
- Maintain Best Buy for Business program to help families with technology purchases.
- Produce weekly ACH payment file for providers and another for parents.
- Conduct weekly meeting to review reimbursement requests that are unclear.
- Respond to data requests from external organizations.
- Perform quality assurance on reimbursement and application processing.
- Conduct Parent Advisory Council meetings to receive feedback from families.
- Assist in fraud prevention.

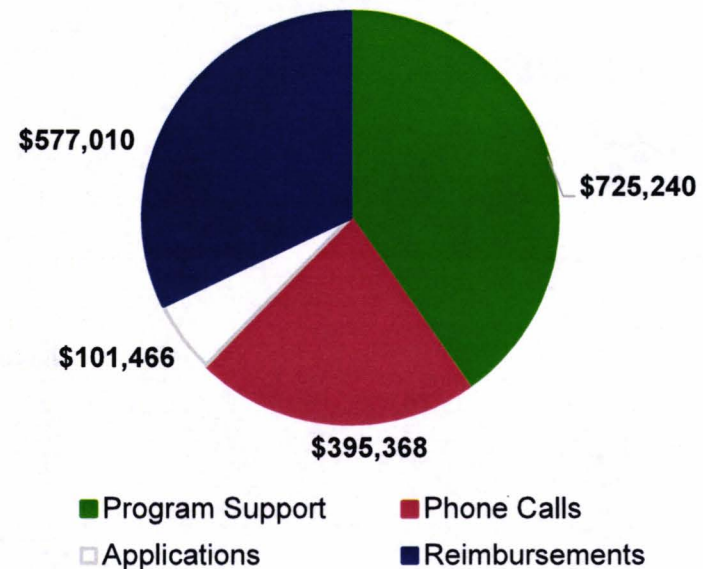


Administrative Costs

2016-17 Administrative Spending



Salaries, Taxes, & Benefits

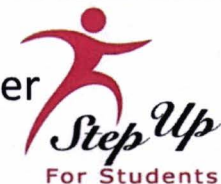


- Salaries, Taxes, & Benefits includes 32 full-time Gardiner employees and part-time support from other departments
- Program Support includes non-production employee cost: IT, Finance, Marketing, and Policy



Administrative Workload

- 91,548 reimbursements submitted containing 114,787 items
- Average of 12.4 payment requests per student
 - Each request must be vetted to ensure it is an authorized use under the law.
- 54,287 Gardiner Scholarship phone calls
 - 5 times as many calls as Florida Tax Credit Scholarship participants, and calls last on average 44 percent longer.
- Payment requests year-round for each student
 - Families make choices throughout the year on educational and therapeutic services, curriculum, and technology.
- Payments to a broad universe of providers
 - There are 907 approved private schools and 3,206 therapists currently participating, as well as many possible tutors, virtual providers, postsecondary schools, etc.
- Payments made frequently
 - Requests reviewed daily and payments made weekly, whereas other scholarship programs require quarterly payments.



Gardiner Scholarships in 2016-17

- Step Up funded 7,591 students for the 2016-17 school year.
 - 5,859 students (77%)= 100% scholarships.
 - 1,732 students (23%)= partial scholarships
- AAA funded 462 students.
- Additional 1,500 new students started an application through Step Up by April 2017.



Step Up's estimate at the end of April 2017:

- In order to fund all of the renewal students from 16-17 with 100% scholarships (many of whom previously had partial scholarships), about **\$84 million** in funding was needed.
- The additional 1,500 new student applications and administrative funding brought the estimate to about **\$101 million.**



2017-18

- 2017 General Appropriations Act included \$71.2 million for scholarships, with an additional 3 percent for administrative fees.
- HB 7069 included \$30 million for scholarships, with no additional administrative funding.

Current Status

- \$4.1 million of rollover funds still available from past years.
- Awarded students:
 - SUFS: 10,003 -- \$100.3 million
 - AAA: 670 -- \$6.9 million
- Funded students through September:
 - SUFS: 9,492 -- \$98,324,128 (avg. 100% scholarship amount = \$10,371.89)
 - AAA: 618 -- \$6.4 million
- All program funds will be expended as of the October invoice.
- Additional students will be put on a waitlist.

