



Children, Families & Seniors Subcommittee

**Wednesday, November 15, 2023
1:00 PM-2:30 PM
Reed Hall (102 HOB)**

Meeting Packet

Committee Meeting Notice

HOUSE OF REPRESENTATIVES

Children, Families & Seniors Subcommittee

Start Date and Time: Wednesday, November 15, 2023 01:00 pm
End Date and Time: Wednesday, November 15, 2023 02:30 pm
Location: Reed Hall (102 HOB)
Duration: 1.50 hrs

Presentations on behavioral health in the workplace:

-Julie Serovich, Ph.D., Dean and Professor, College of Behavioral and Community Sciences, University of South Florida

-Robert Roncska, Senior Vice President, Florida Chamber Health Council

To submit an electronic appearance form, and for information about attending or testifying at a committee meeting, please see the "Visiting the House" tab at www.myfloridahouse.gov.

NOTICE FINALIZED on 11/08/2023 3:13PM by Clenord.Judeline

Mental Health Initiatives

at the

University of South Florida

Dr. Julie Serovich, Dean of the College of Behavioral and Community Sciences



Mental Health & Wellness in the Workplace Course



UNIVERSITY of
SOUTH FLORIDA
College of Behavioral & Community Sciences



CRISIS CENTER
OF TAMPA BAY
Help. Hope. Healing.

Mental Health & Wellness in the Workplace Course



1. IMPACT OF WELLNESS

Introduction and the business case for addressing mental health and wellness in the workplace.

Mental Health & Wellness in the Workplace Course



1. IMPACT OF WELLNESS

Introduction and the business case for addressing mental health and wellness in the workplace.



2. CHANGING CLIMATE

How teams can work together to make mental health and wellness a priority in a changing workplace culture.

Mental Health & Wellness in the Workplace Course



1. IMPACT OF WELLNESS

Introduction and the business case for addressing mental health and wellness in the workplace.



2. CHANGING CLIMATE

How teams can work together to make mental health and wellness a priority in a changing workplace culture.



3. FOUNDATIONS

An introduction to the history and terminology related to mental health, behavioral health, and addiction.

Mental Health & Wellness in the Workplace Course



1. IMPACT OF WELLNESS

Introduction and the business case for addressing mental health and wellness in the workplace.



2. CHANGING CLIMATE

How teams can work together to make mental health and wellness a priority in a changing workplace culture.



3. FOUNDATIONS

An introduction to the history and terminology related to mental health, behavioral health, and addiction.



4. IDENTIFICATION

An overview of common mental health, behavioral health, and addiction challenges.

Mental Health & Wellness in the Workplace Course



1. IMPACT OF WELLNESS

Introduction and the business case for addressing mental health and wellness in the workplace.



2. CHANGING CLIMATE

How teams can work together to make mental health and wellness a priority in a changing workplace culture.



3. FOUNDATIONS

An introduction to the history and terminology related to mental health, behavioral health, and addiction.



4. IDENTIFICATION

An overview of common mental health, behavioral health, and addiction challenges.



5. APPROACH

How to approach someone who may be living with mental health, behavioral health, or addiction challenges.

Mental Health & Wellness in the Workplace Course



1. IMPACT OF WELLNESS

Introduction and the business case for addressing mental health and wellness in the workplace.



2. CHANGING CLIMATE

How teams can work together to make mental health and wellness a priority in a changing workplace culture.



3. FOUNDATIONS

An introduction to the history and terminology related to mental health, behavioral health, and addiction.



4. IDENTIFICATION

An overview of common mental health, behavioral health, and addiction challenges.



5. APPROACH

How to approach someone who may be living with mental health, behavioral health, or addiction challenges.



6. TRAUMA & SUICIDE

How to identify and approach someone experiencing trauma or thoughts of suicide.

Mental Health & Wellness in the Workplace Course



1. IMPACT OF WELLNESS

Introduction and the business case for addressing mental health and wellness in the workplace.



2. CHANGING CLIMATE

How teams can work together to make mental health and wellness a priority in a changing workplace culture.



3. FOUNDATIONS

An introduction to the history and terminology related to mental health, behavioral health, and addiction.



4. IDENTIFICATION

An overview of common mental health, behavioral health, and addiction challenges.



5. APPROACH

How to approach someone who may be living with mental health, behavioral health, or addiction challenges.



6. TRAUMA & SUICIDE

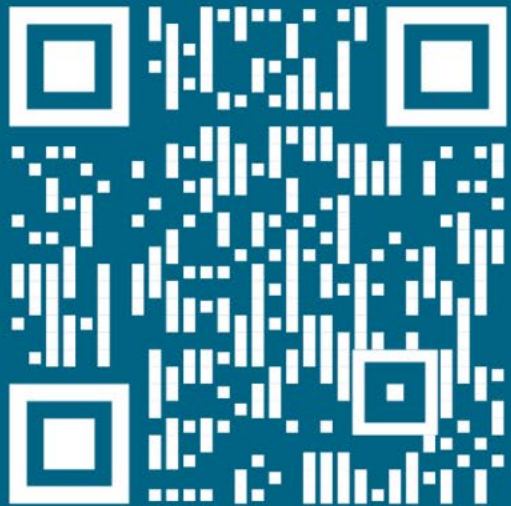
How to identify and approach someone experiencing trauma or thoughts of suicide.



7. WELLNESS

Explore resources available to support the wellness of employees.

Mental Health & Wellness in the Workplace Course



Scan or
visit usf.edu/MHWW

Programs

- BSW, MSW, PhD in Social Work
- MA, MS, PhD in Applied Behavior Analysis
- MA in Clinical Rehabilitation & Mental Health Counseling
- MS in Marriage & Family Therapy
- BS in Behavioral Healthcare with concentrations in Applied Behavioral Analysis, Behavioral Health Across the Lifespan, Children's Behavioral Healthcare

Questions?



**Florida Chamber
Health Council**

**FLORIDA CHAMBER
HEALTH COUNCIL**

**Dr. Robert “Navy Bob”
Roncska**

**Senior Vice President,
Florida Chamber Health Council**

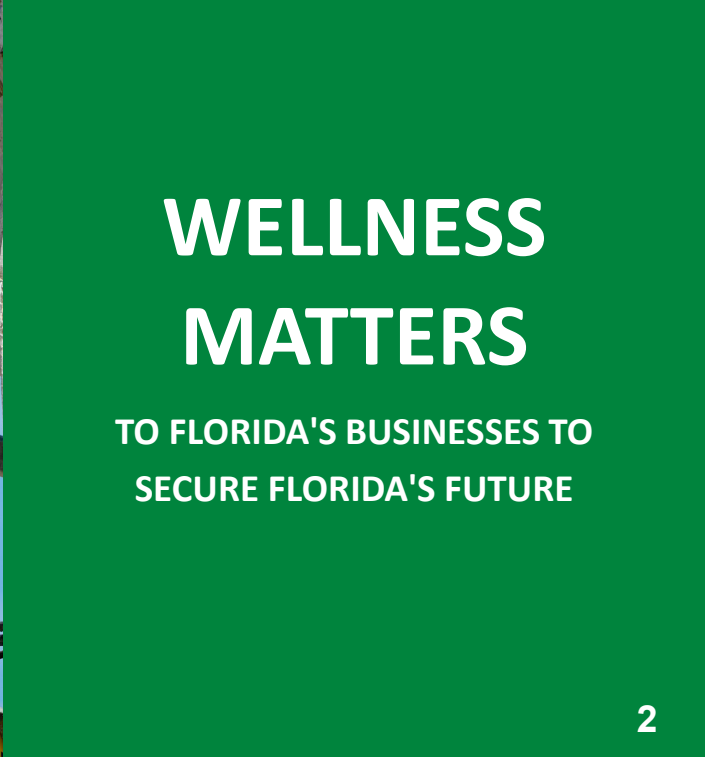




For over 100 years, the Florida Chamber of Commerce has stood up for what's right for Florida businesses.

The Florida Chamber Leadership Cabinet is a trusted incubator of research, leadership, and education, our Advisory Board members collaborate closely and work alongside job creators to develop employee-driven programs, inspiring and empowering personal accountability that translates into workplace excellence.

The time to build a safer, healthier, and more sustainable Florida begins today. We are always stronger together.



Making Florida the Safest, Healthiest, and Most Sustainable State in America



**FLORIDA CHAMBER
SAFETY COUNCIL**

**FLORIDA CHAMBER
HEALTH COUNCIL**

**FLORIDA CHAMBER
SUSTAINABILITY COUNCIL**

16th to 10th



39 Goals

- +2.8 Million Net New Residents
- +1.23 Million Net New Jobs

WELL-BEING RANKING

20th
(Improving)

Top 5
2030 Goal

FLORIDA 2030
THE BLUEPRINT TO SECURE FLORIDA'S FUTURE

KEY TARGETS & STRATEGIES

FLORIDA CHAMBER Foundation 1968 - 2018

www.Florida2030.org



Commanding Officer USS TEXAS
SSN-775

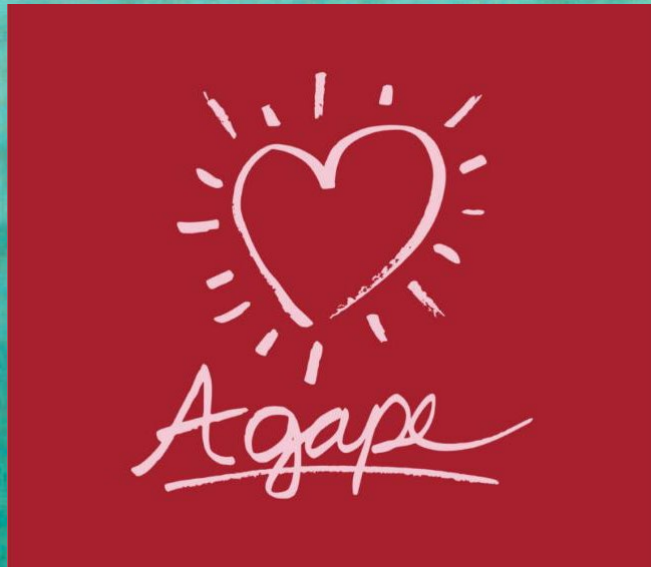


Presidential Military Aide



Commodore Submarine
Squadron Seven

My WHY





“Good ideas are not adopted automatically. They must be driven into practice with courageous impatience.”

Hyman Rickover- The father of the Nuclear Navy



“The public understanding, treatment and prevention of mental disabilities have not made comparable progress since the earliest days of modern history. Yet mental illness and mental retardation are among our most critical health problems.

They occur more frequently, affect more people, require more prolonged treatment, cause more suffering by the families of the afflicted, waste more of our human resources, and constitute more financial drain upon both the public treasury and the personal finances of the individual families than any other single condition.”

- President John F. Kennedy

- **Economic Impact**
- **Future Workforce**
- **Strain on Healthcare System**
- **Increased Pressure on Social and Family Dynamics**
- **Public Safety**
- **Enduring Health Ramifications**
- **Productivity**

It is only getting worse.

**You are NOT
ALONE**

Millions of people are affected by mental illness each year. Across the country, many people just like you work, perform, create, compete, laugh, love and inspire every day.



1 in 5 U.S. adults experience mental illness

1 in 20
1 in 20 U.S. adults experience serious mental illness

17%
of youth (6-17 years) experience a mental health disorder



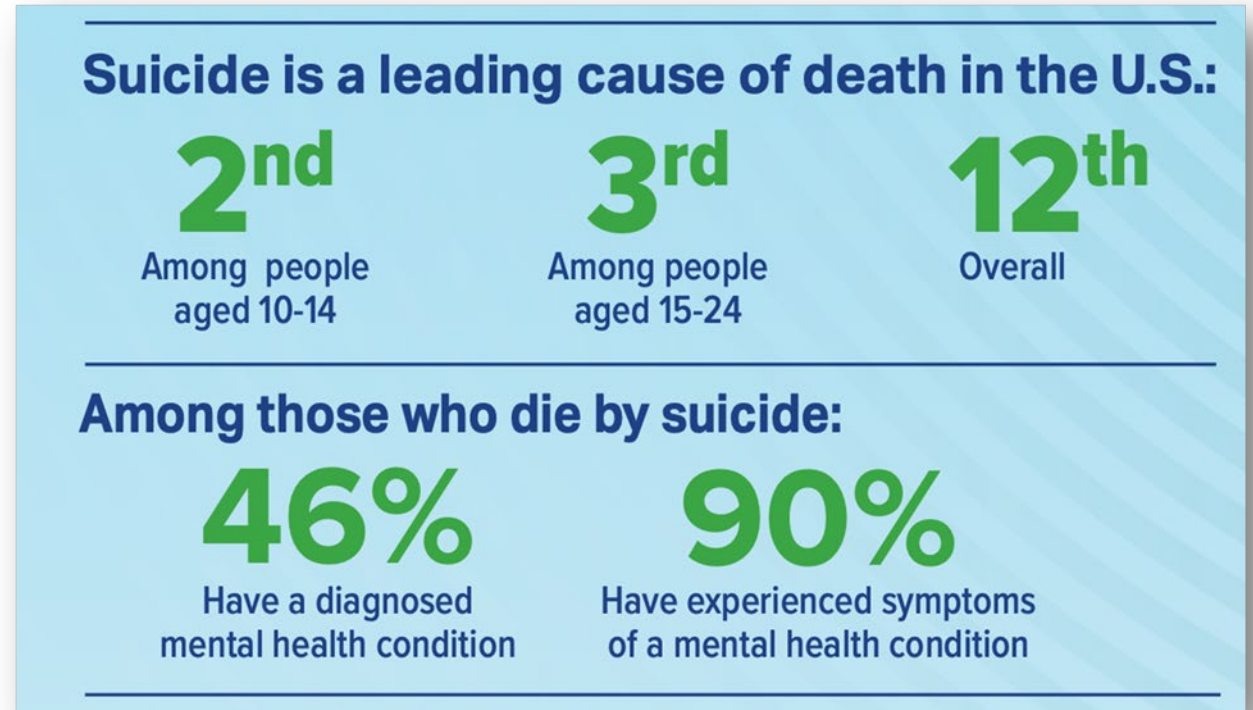
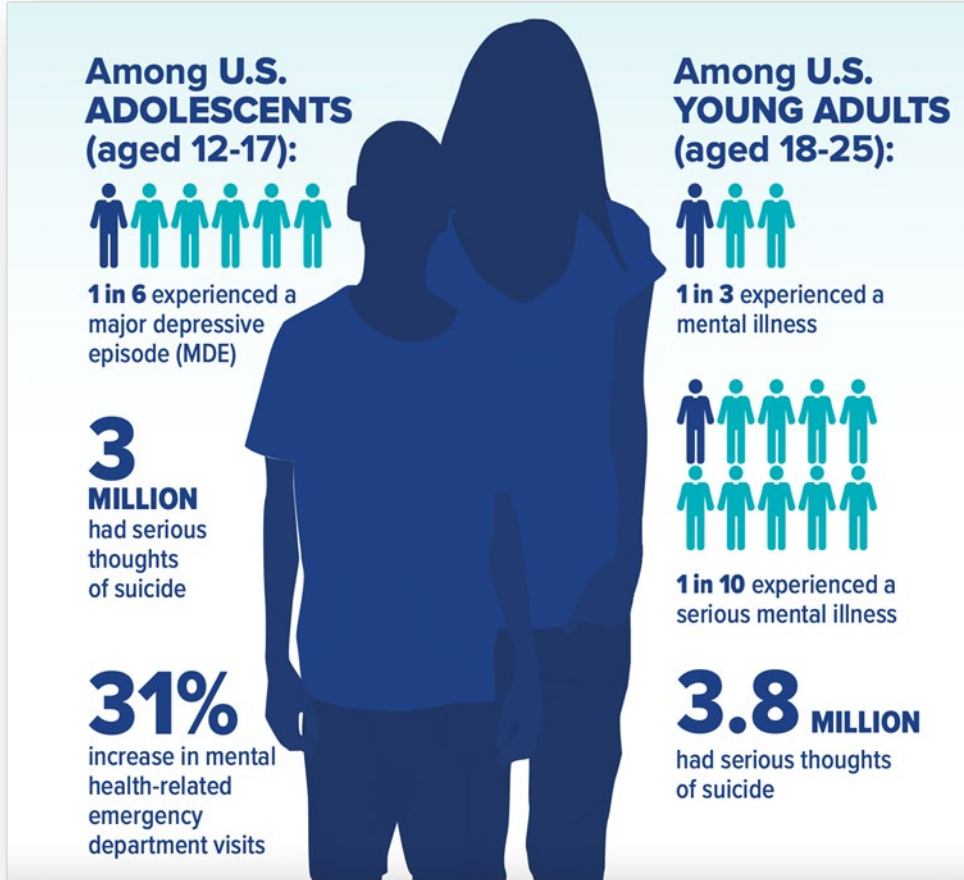
85.2%

of survey respondents have or know someone who has suffered from a mental health crisis



Depression and anxiety disorders cost the global economy **\$1 trillion** each year in lost productivity

Mental Health Affects All Ages



Where Does Florida Rank? Mental Health in Florida By The Numbers



Access to care: 49th in the U.S.



633k untreated adults

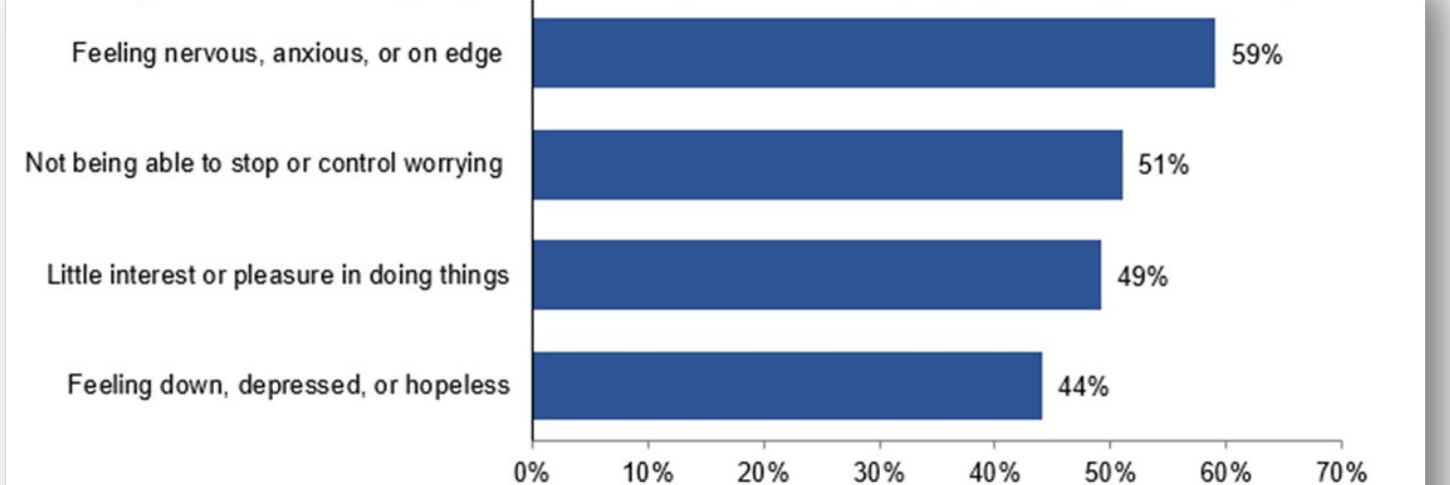


116k untreated youths

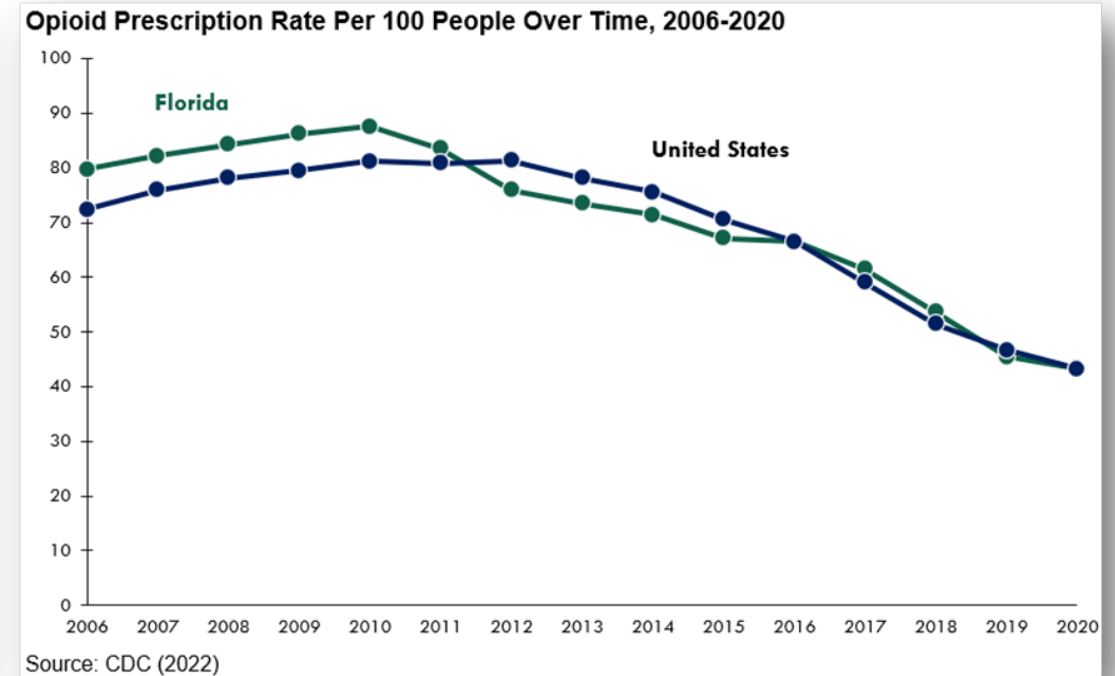
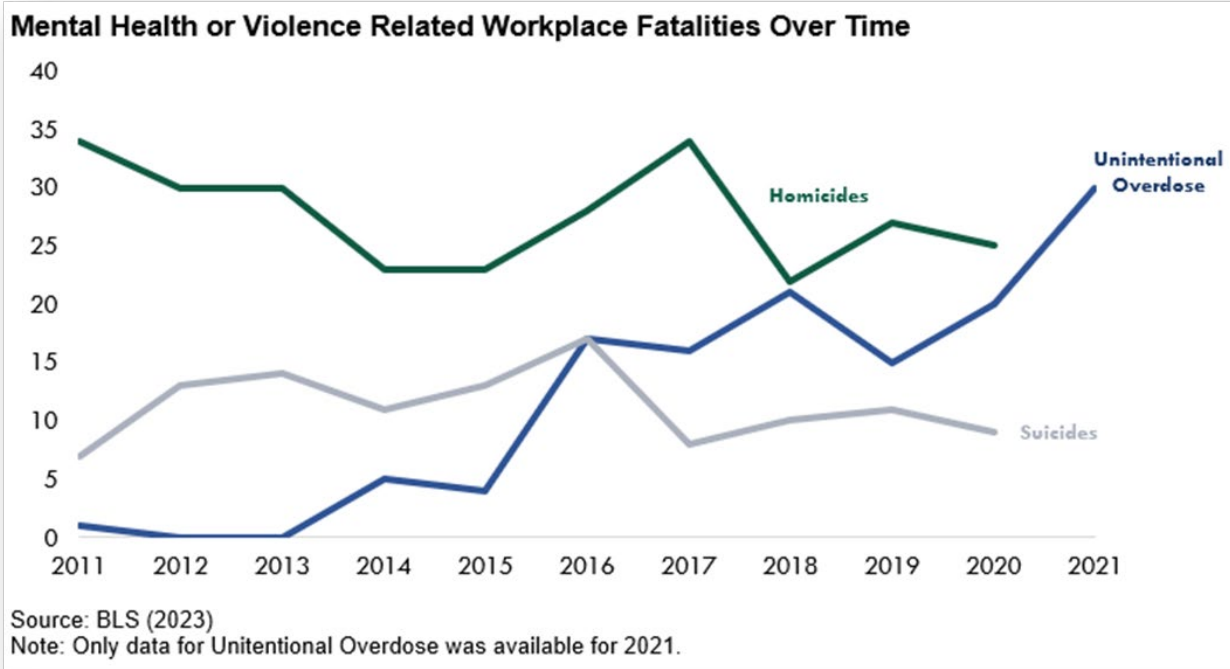


1,343 Floridians waiting for help on average

Percentage of Florida Survey Population with Depression/Anxiety Symptoms, April 26th – May 8th, 2023

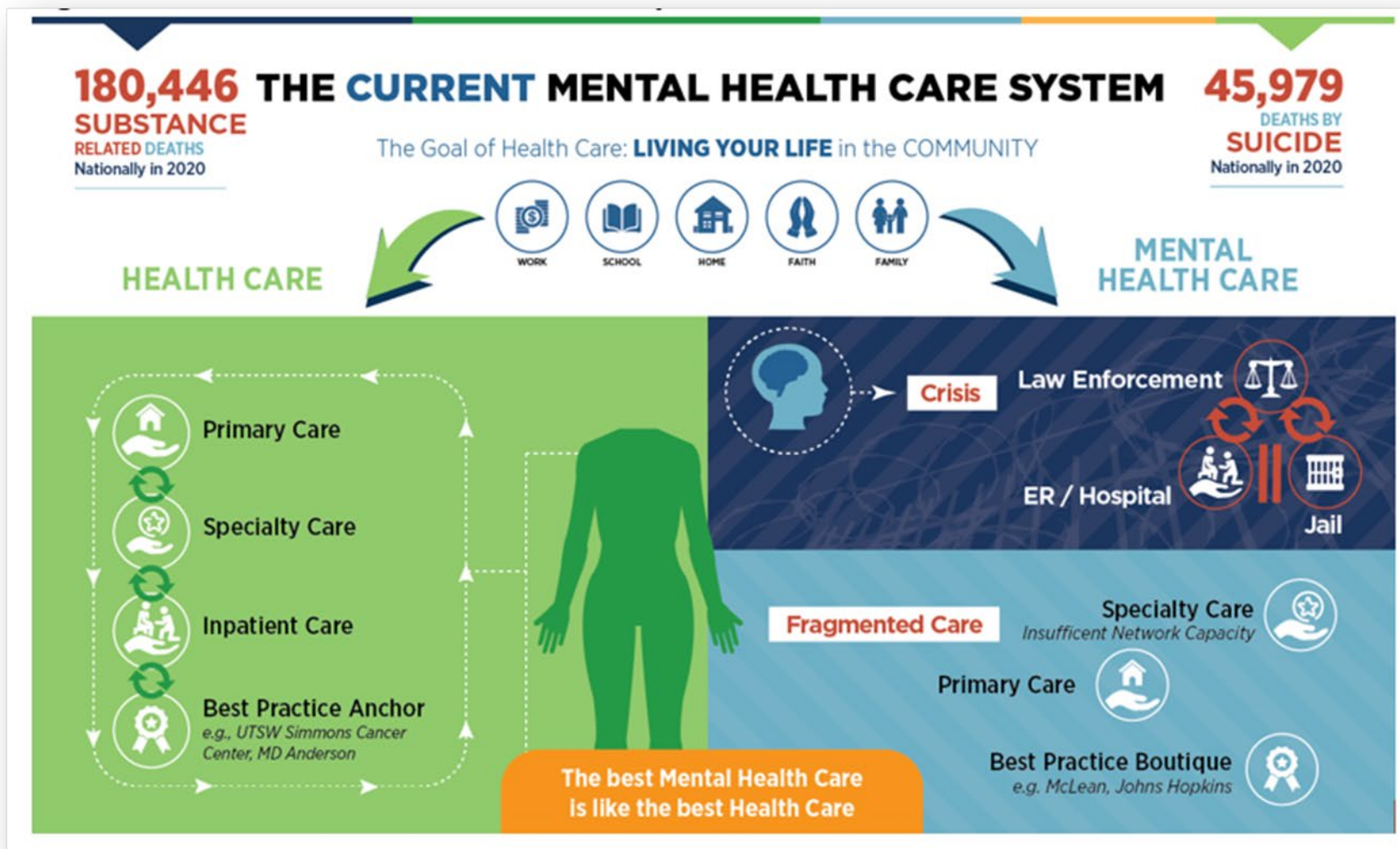


Source: US Census Bureau, Household Pulse Survey (2023)



**The opioid epidemic has spilled
over into workplace safety.**

Current Mental Health Care System



Miami-Dade County Jail: Largest Psychiatric Institution in Florida

- The Miami-Dade County jail contains nearly half as many beds serving inmates with mental illnesses as all state civil and forensic mental health treatment facilities combined.

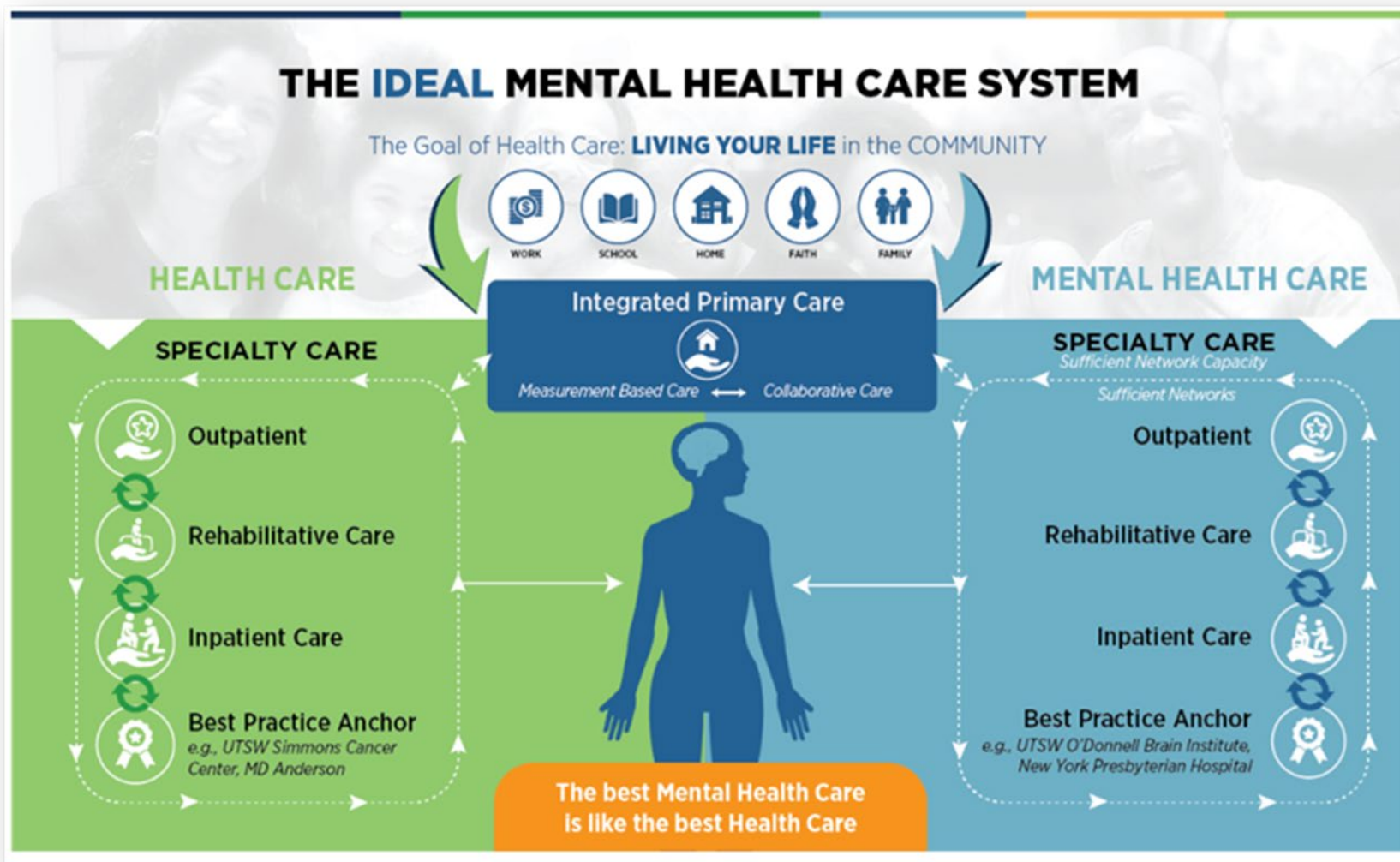
Eleventh Judicial Circuit Criminal Mental Health Project Dec 2021.

- The leading provider of mental health services in Orange County is the Orange county jail.

Orange County Government, Florida



The Ideal Mental Health Care System



Inaugural Mental Health Summit

A first-time business-led statewide movement designed to unite business leaders and mental health experts in revolutionizing Florida's mental health landscape.



**Dr. Elana
Schrader**



**Kacie
Kelly**



**John
Snook**



**Dr. Vince
Hafeli**



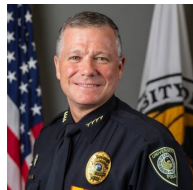
**Kim
LaMontagne**



**Dr. Christine
Cauffield**



**Heather
Cogger**



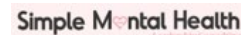
**Chief Carl
Metzger**



**Dr. Julie
Serovich**



**Adam
Nemer**



**Hamilton
Baiden**

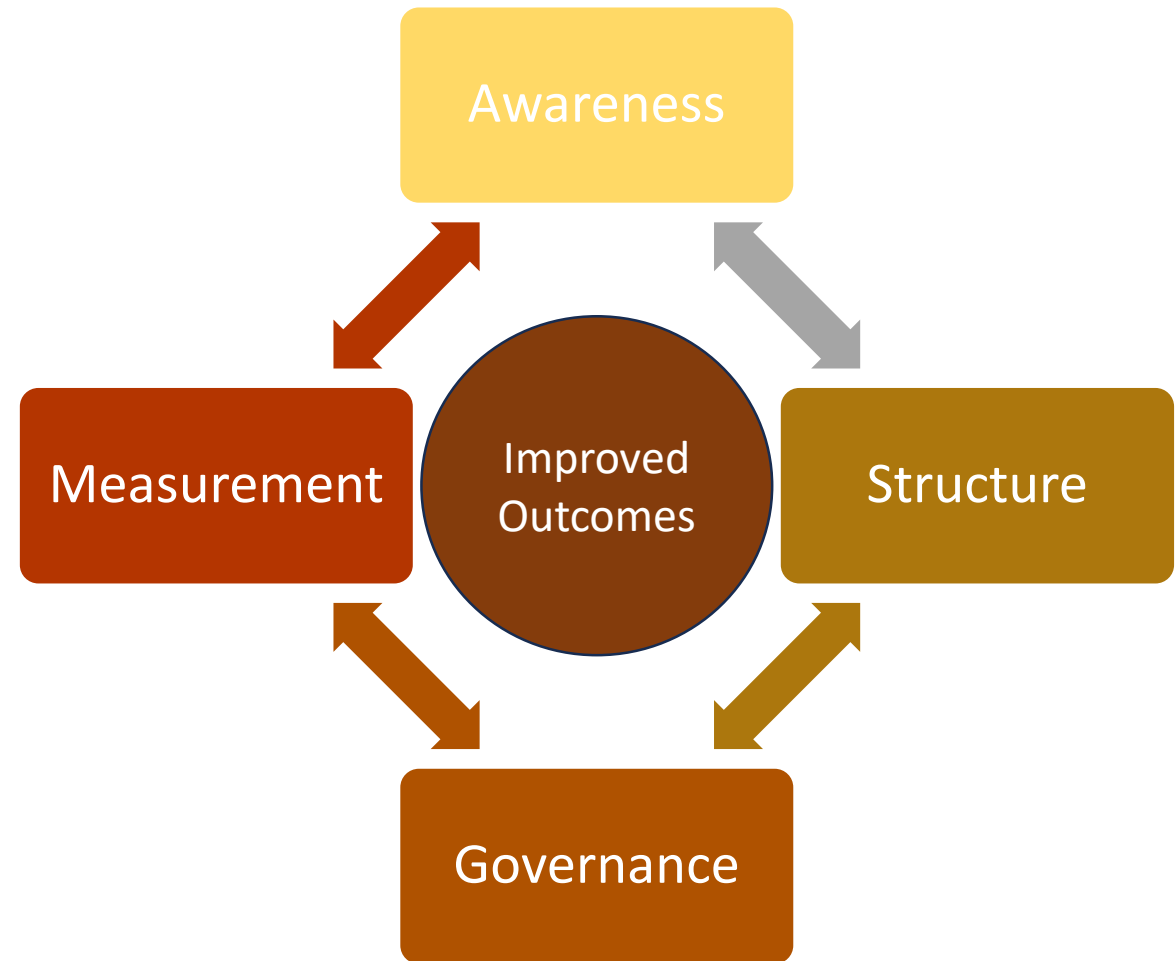


Research Questions

Where are the good things happening across sectors in the state?

What are the things that need improvement across sectors in the state?

Where might we leverage state and federal policy to accelerate data-driven, scalable solutions in the Florida marketplace?





**LEADERSHIP
CONFERENCE**
on Safety, Health + Sustainability

2024

**Leadership Conference
on Safety, Health +
Sustainability**

May 9-10, 2024
Disney's Contemporary Resort

**Keynote Speaker:
Michael Phelps**





FLORIDA CHAMBER HEALTH COUNCIL

Thank you!!

Dr. Robert “Navy Bob”

Roncska

**Senior Vice President,
Florida Chamber Health Council**

Rroncska@flchamber.com