



Higher Education Appropriations Subcommittee Meeting Packet

**September 20, 2011
1:30 p.m. – 3:30 p.m.
Reed Hall**



The Florida House of Representatives
APPROPRIATION COMMITTEE

Higher Education Appropriations Subcommittee

Dean Cannon
Speaker

Marlene O'Toole
Chair

MEETING AGENDA

Reed Hall

September 20, 2011

- I.** Meeting Called To Order
- II.** Opening Remarks by Chair
- III.** Introduction of Members
- IV.** Budget Overview
- V.** Member Site Visit Assignments
- VI.** Closing Remarks
- VII.** Meeting Adjourned

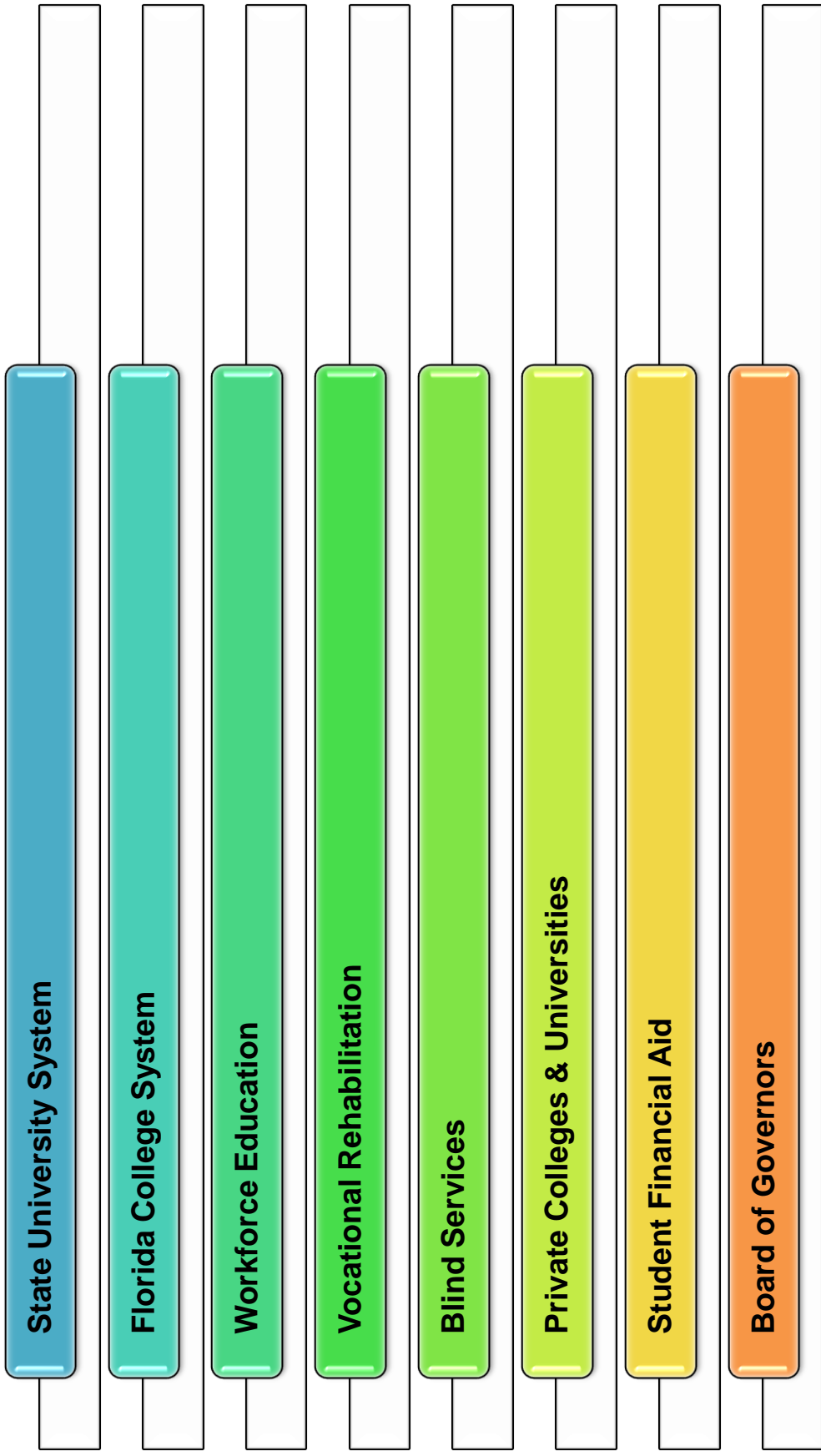
Higher Education Appropriations Sub-Committee

Rep. Marlene O'Toole, Chair

Rep. Eddy Gonzalez, Vice-Chair

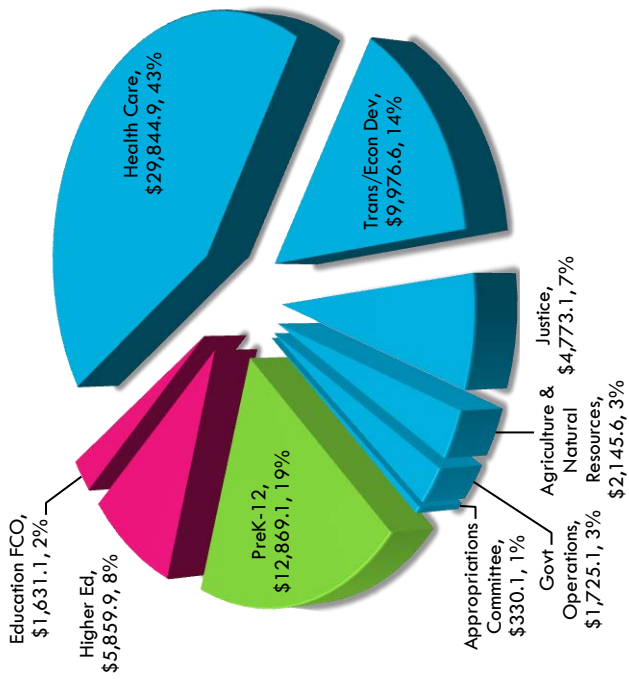
Higher Education Appropriations Sub-Committee

Areas of Jurisdiction

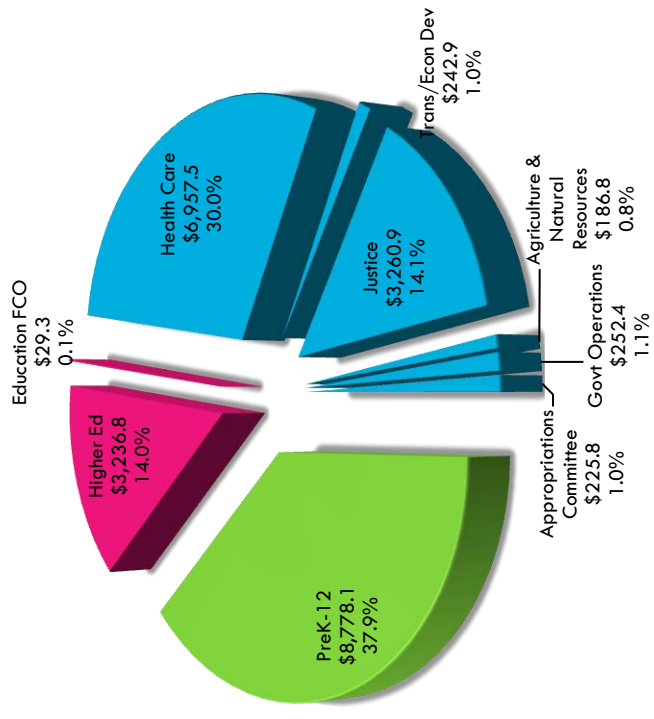


FY 2011-12 Appropriations

Total State Appropriations = \$69,155.6M
Education = \$20,360.2M, 29%
Higher Education = \$5,859.9M, 8%

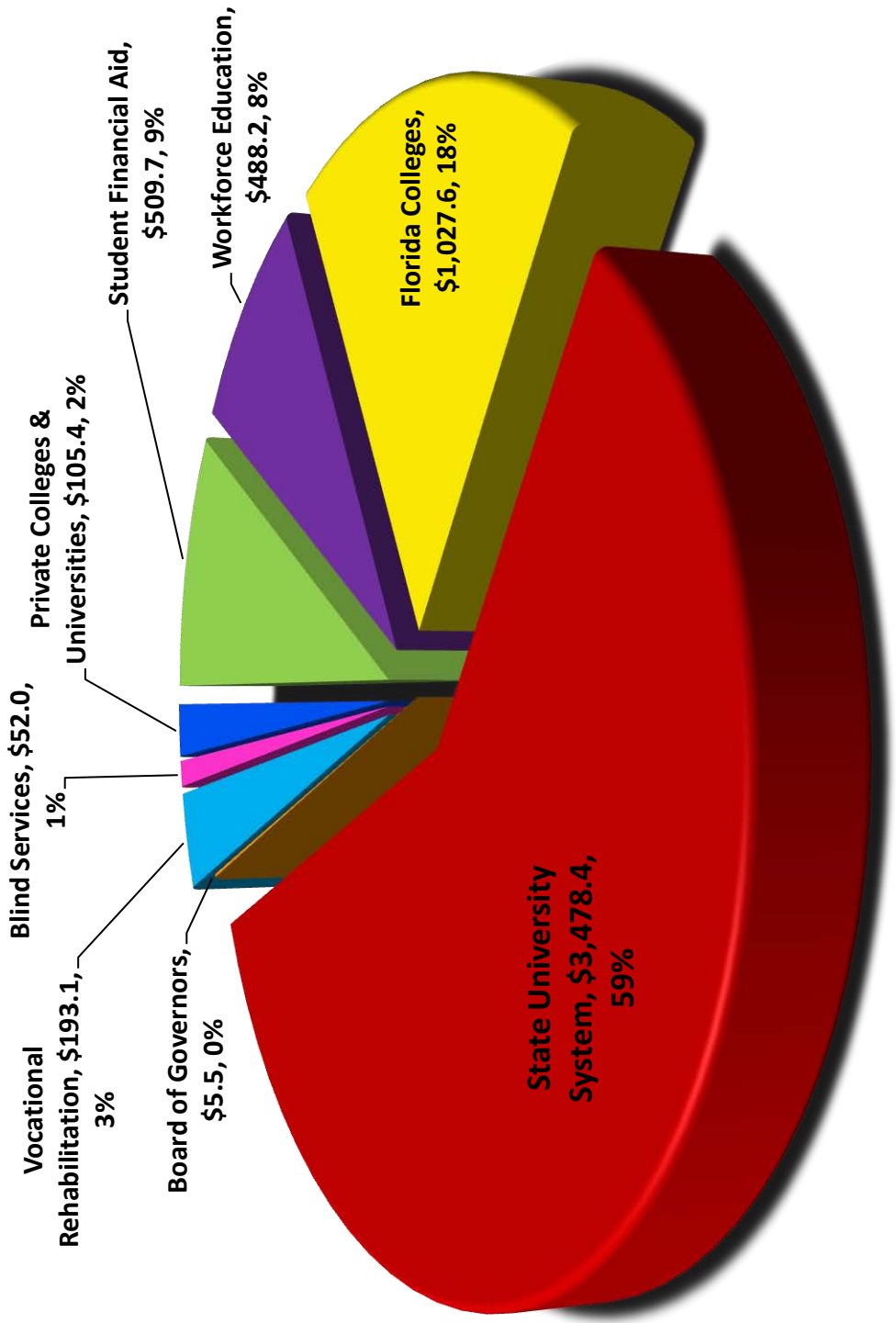


Total State GR Appropriations = \$23,170.4M
Education = \$12,044.2M, 52%
Higher Education = \$3,236.8, 14%



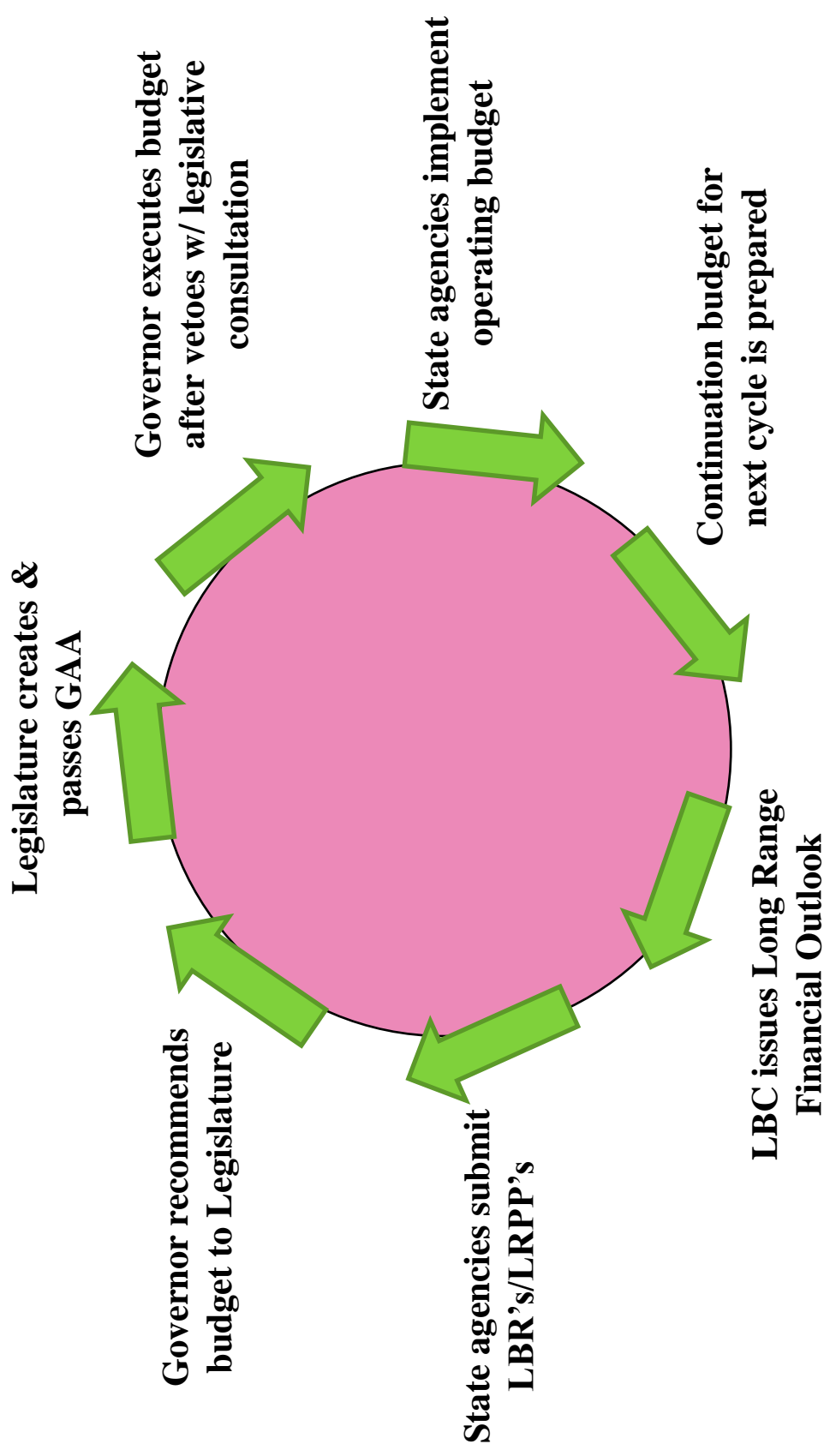
Higher Education State Appropriations by Program

FY 2011-12 - \$5.86 Billion



** Does not include tuition and fee revenue for the Florida Colleges (\$907.8 million) and Workforce Education institutions (\$41.0 million)

Budget Process Cycle

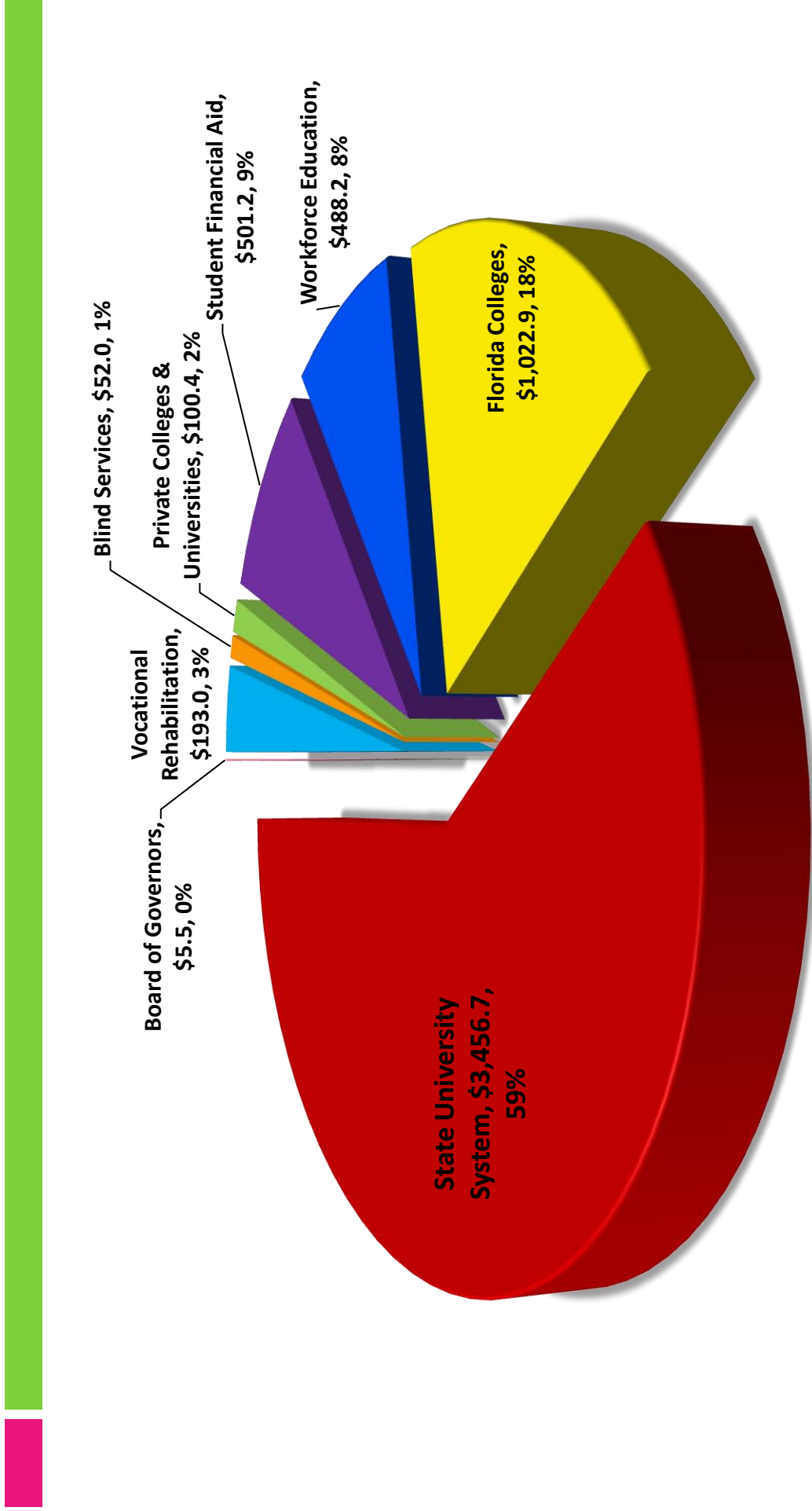


What is the Base Budget?

- FY 2011-12 Total Appropriation = \$5.86 Billion
- FY 2012-13 Total Base Budget = \$5.82 Billion
- Difference = FY 2011-12 Total Appropriation minus nonrecurring appropriations plus statewide salary and benefit adjustments, and annualized costs.

Higher Education Base Budget by Program

FY 2012-13 - \$5.82 Billion



** Does not include tuition and fee revenue for the Florida Colleges (\$907.8 million) and Workforce Education institutions (\$41.0 million)

Nonrecurring Appropriations

FY 2011-12

	FY 2011-12 Appropriation	FY 2011-12 Nonrecurring Appropriation	Startup Budget FY 2012-13
BLIND SERVICES, DIV OF	11,150	11,150	-
Tenant Broker Commissions	11,150	11,150	
UNIVERSITIES	1,637,756,999	25,780,770	1,615,139,013
USF Medical Center	53,746,143	250,000	53,496,143
Distance Learning	573,859	295,000	278,859
Education & General	1,573,853,990	24,767,144	1,552,249,630
Moffitt Cancer Center	9,583,007	468,626	9,114,381
FLORIDA COLLEGES	896,704,149	6,295,000	892,064,856
2+2 Pub And Pvt Part	3,000,000	3,000,000	
Comm College Prg Fund	893,092,474	3,000,000	891,748,181
Distance Learning	611,675	295,000	316,675
PRIVATE COLLEGES/UNIV	95,307,292	4,999,127	90,308,165
Fla Resident Access Grant	80,761,255	3,150,000	77,611,255
Academic Prg Contracts	586,374	17,591	568,783
Hist Blk Priv Colleges	8,773,331	750,000	8,023,331
LECOM / FI - Hlth Prgs	925,500	185,078	740,422
Nova SE Univ - Hlth Prgs	4,260,832	896,458	3,364,374
STU FIN AID PGM/STATE	356,618,528	8,574,230	348,044,298
Fl Bright Futures/Prog	350,000,000	7,080,000	342,920,000
Prepaid Tuition Scholarship	4,618,528	1,000,000	3,618,528
Transfer/Fl Education Fund	2,000,000	494,230	1,505,770
WORKFORCE EDUCATION *	5,000,000	2,700,000	-
Skill Assessment/Trng	5,000,000	2,700,000	
VOCATIONAL REHAB	35,366	35,366	-
Tenant Broker Commissions	35,366	35,366	
GRAND TOTAL	5,864,937,280	48,395,643	5,820,013,011

* \$2.3 million in recurring funds for the Ready to Work Program were transferred to the Department of Economic Opportunity by a Type II Transfer.

**Member Site Visit
Assignments**

Higher Education Appropriations Committee Workgroup Assignments

September 20th Committee Meeting assignments (reports due November 1st)

<u>Members</u>	<u>Type of Institution</u>	<u>Name of Institution</u>	<u>Location</u>
Representative Adkins Representative Jones	HBCU	Edward Waters College	Jacksonville
Representative Ahern Representative Taylor	HBCU	Bethune Cookman University	Daytona Beach
Representative Stargel Representative Williams	Workforce	Taylor Technical Institute	Perry
Representative Reed Representative Passidoma	FRAG	Eckerd College	St. Petersburg
Representative Gonzalez Representative Oliva	FRAG	Keiser University	Miami
Representative Trujillo Representative Nunez	ABLE	Miami International University of Art & Design	Miami
Representative O'Toole Representative Bullard	ABLE	Columbia University	Orlando
Representative O'Toole Representative Moraitis	Workforce	Atlantic Technical Center	Coconut Creek

QUESTIONS

1. What state funding is provided for the institution or its students?
2. What other sources of funding (besides state funds) does your institution rely on?
3. What is the entrance criteria for students?
4. What is the average debt of students upon graduation?
5. What are the student demographics (age, race, residency, full/part-time)
6. What are the most popular degree or certificate programs?
7. How does the institution evaluate need for new programs?
8. How do you track the effectiveness of programs?
9. Do you offer job placement services?
10. Do you track students' job attainment post graduation & for how long?