



---

# Agriculture & Natural Resources Appropriations Subcommittee

January 14, 2014  
1:00 PM – 3:00 PM  
Reed Hall



### **AGENDA**

Agriculture & Natural Resources Appropriations Subcommittee  
January 14, 2014  
1:00 p.m. – 3:00 p.m.  
Reed Hall

- I. Call to Order/Roll Call
- II. Opening Remarks
- III. Presentation on Farm Share by Patricia Robbins, President & CEO, Farm Share
- IV. Presentation on Food Banks by Rebecca Brislain, Executive Director, Florida Association of Food Banks
- V. Staff Demonstration on the Water Project Funding Application Process
- VI. Closing Remarks/Adjournment





**FARM SHARE**

*a charitable organization*

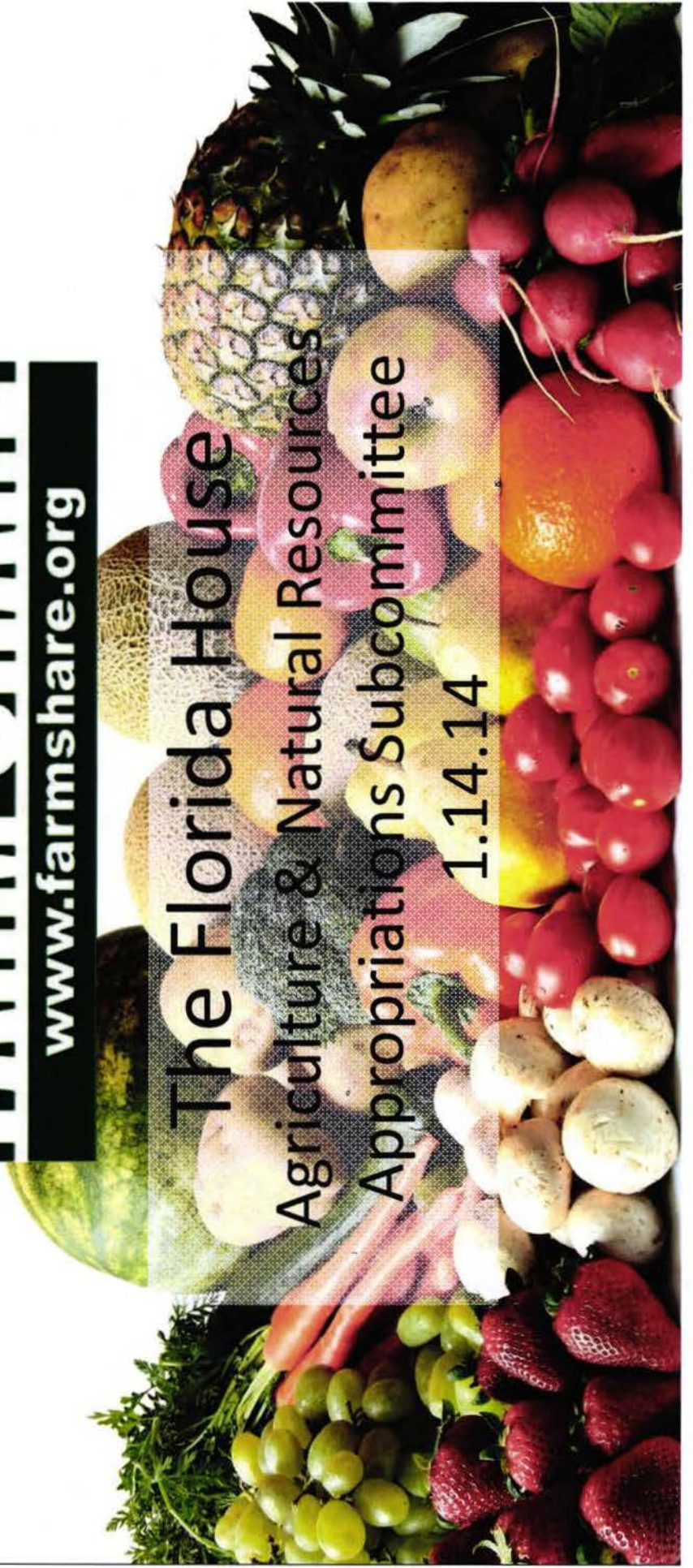
**FEEDING HUNGRY PEOPLE**

www.farmshare.org  
1-888-749-3276

# FARM SHARE

[www.farmshare.org](http://www.farmshare.org)

The Florida House  
Agriculture & Natural Resources  
Appropriations Subcommittee  
1.14.14



# About Farm Share

---

- Farm Share is a statewide non-profit fresh produce recovery program that rescues fresh produce and other commodities and distributes it to **over 1 million low-income households** all across Florida **at no charge**.
- Farm Share was founded in 1991 by Patricia Robbins in response to the issues of wasted food and hunger in Florida.
- Since its inception, the focus has been to rescue fresh produce from farmers that would otherwise be dumped, and provide it to the hungry.
- Food recovered by Farm Share is high quality and only deemed unmarketable due to size, shape, color or market conditions.
- Farm Share distributes USDA food for Miami-Dade & Broward counties.



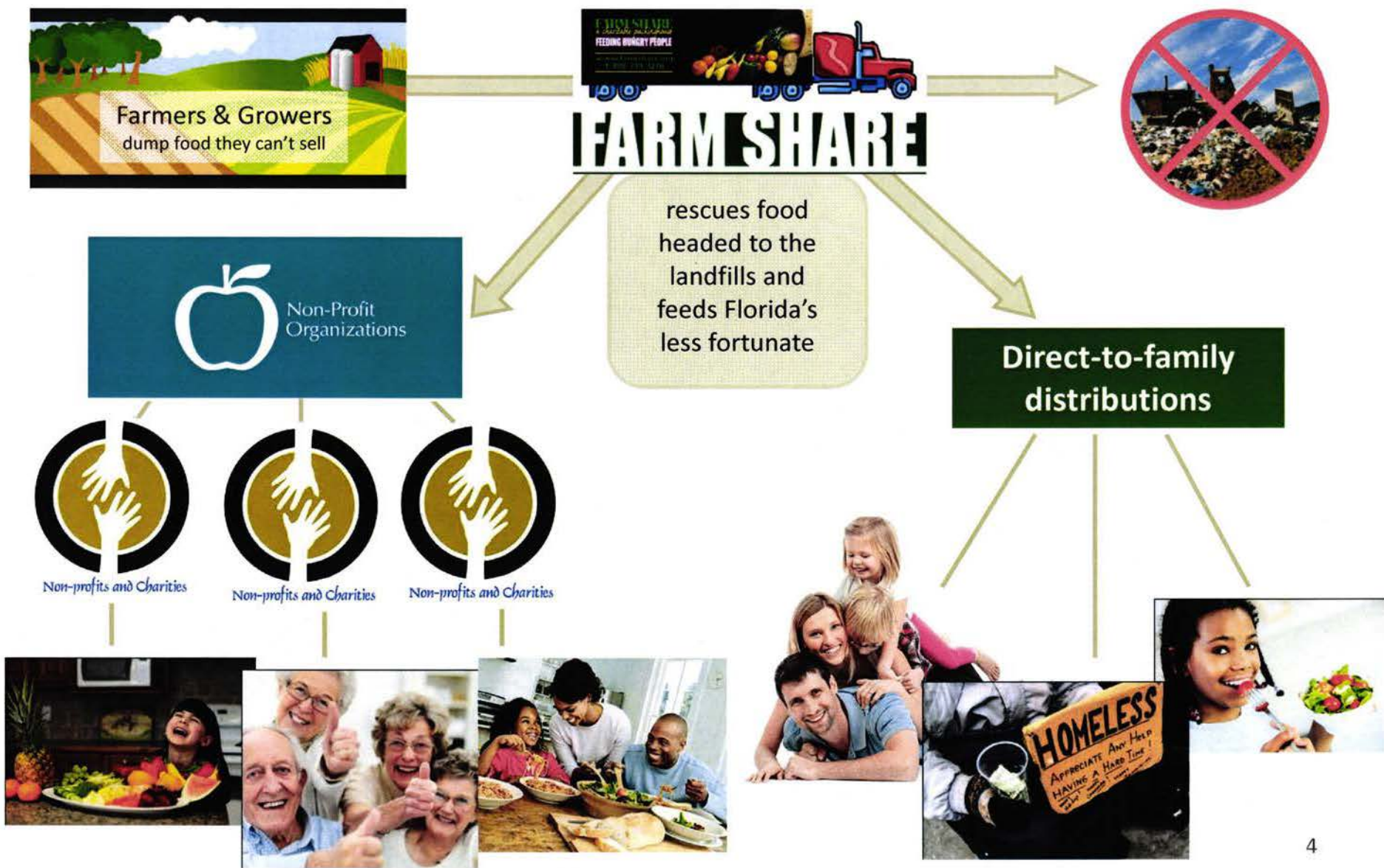
# Proven Model

---

- The Farm Share model has been successfully operating in service of Florida's less fortunate for over 21 years.
- Farm Share works through partnerships with over 774 community agencies throughout the State.
- We also provide food for large food banks and pantries, who then supply food to over 300 smaller community food pantries across the State for a combined agency **network of over 1,000 partner organizations.**
- These partner organizations are all 501(c)3 non-profit.
- Farm Share distributes recovered food to these organizations and they distribute it to individuals in their communities.
- "If you would replicate the Farm Share program, there would be no world hunger"
  - USDA Secretary Dan Glickman at the World Food Summit in Rome, Italy



# How it Works



# Community Partners

---

Farm Share's network of  
**over 1,000 State-wide community partners**  
is comprised of a wide variety of 501(c)3 non-profit organizations

- Faith-based organizations
- Chaplaincy programs
- Homeless shelters
- Community food pantries
- Domestic violence centers
- Youth programs
- Boy & Girls Clubs
- Senior Centers
- Florida DCF affiliates
- Children's homes / Orphanages





# State-Wide Operation



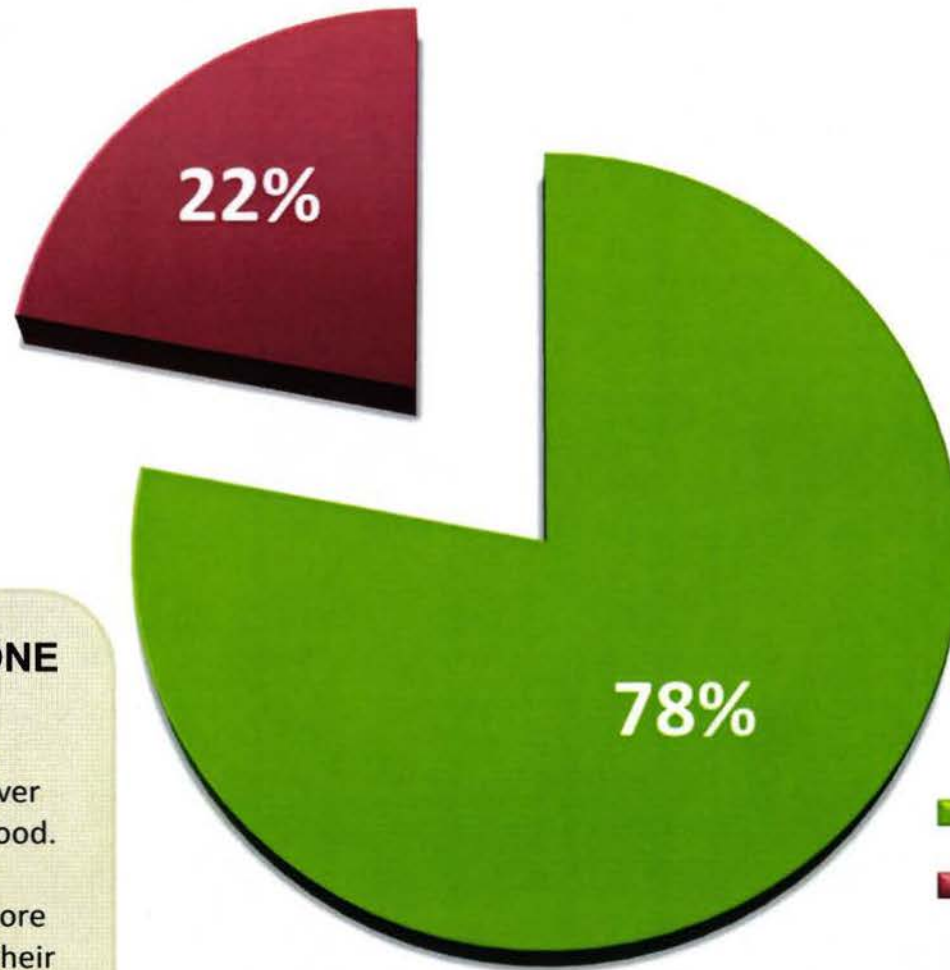
# Feeding the Need, not the Landfills

---

- Florida is a naturally abundant State.
- Farm Share makes use of that abundance by redirecting food once destined for the landfills, into the homes of Florida's hungry families.
- 40% of what is grown in Florida never reaches the retail market.
  - 15% is discarded after it is harvested
  - 25% is left in the field and plowed under because of market conditions
- Florida Farmers receive federal tax deductions of up to 200% for donated food.
- The Farm Share model avoids the waste of our great State's natural resources.



# Farm Share Facts



## DID YOU KNOW?

- Every year, over 50% of the food Farm Share distributes is fresh produce.
- Farm Share's administration cost is only 2%!

## LAST YEAR ALONE

Farm Share fed over 1 million families with over 23 million pounds of food.

Volunteers donated more than 25,000 hours of their time.

Our community partners received food from Farm Share 6,000+ times.



# Farm Share Facts

---

Last  
Complete  
Fiscal Year

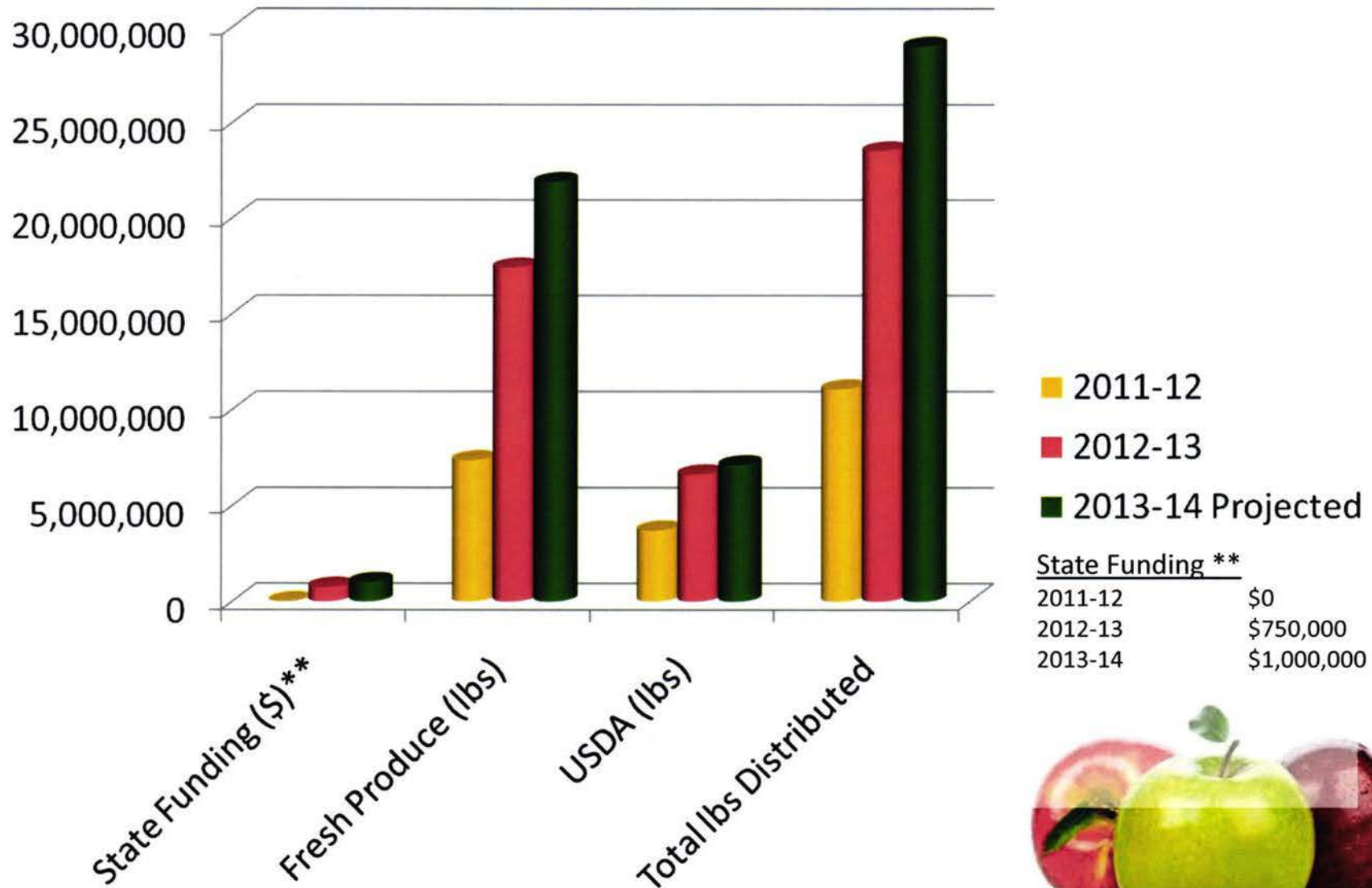
- 17.3 million pounds of fresh produce recovered and distributed.
- 6.1 million pounds of USDA/TEFAP commodities distributed in Miami-Dade and Broward Counties.
- 23.4 million pounds of food distributed to Florida's families.

Projected  
Current  
Fiscal Year  
(2013-14)

- 21.8 million pounds of fresh produce recovered and distributed
- 7.1 million pounds of USDA/TEFAP commodities distributed in Miami-Dade and Broward Counties.
- 28.9 million pounds of food distributed to Florida's families.



# State Funding at Work



# State Funding at Work

---

## Return on Investment (ROI) 2012-13

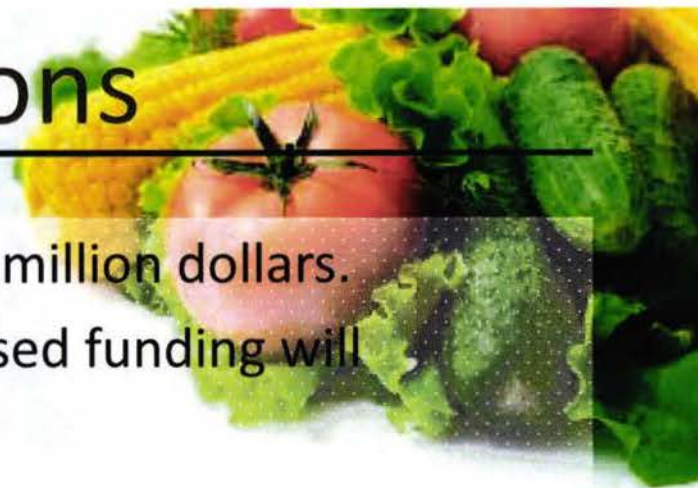
The combined ROI in terms of food value and federal tax deduction available to farmers is **\$136.86 for every State \$1** invested in the Farm Share program.

This is **a 41% increase** over the previous year's ROI of \$96.88.



# 2014 Projections

---



Farm Share's funding request for 2014-15 is \$2 million dollars.

Farm Share's operations are scalable, so increased funding will translate to substantial increase in our results.

## Projections:

- Serving more community partners in underserved areas.
- Operating a distribution location in Central Florida or serving the area with more tractor-trailer deliveries.
- Increase the donations of fresh produce by farmers with outreach and incentives.
- Increase outreach for bringing donations from the 8 Southeastern States into Florida.
- 30% increase in the fresh produce collected for 2014-15.
- 30% increase in the number of households served for 2014-15.

# Thank You!

Farm Share would like to thank the Legislators, Agriculture Commissioner Adam Putnam and the Governor of the State of Florida for more than 20 years of continued support.









# FLORENDA ASSOCIATION OF FOOD BANKS

PARTNER STATE  
ASSOCIATION OF  
**FEEDING<sup>®</sup>**  
**AMERICA**

[HungerFreeFlorida.org](http://HungerFreeFlorida.org)



# Who We Are...

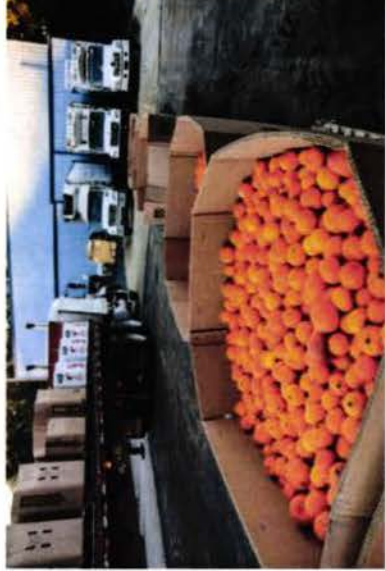


**FLORIDA  
ASSOCIATION OF  
FOOD BANKS**

PARTNER STATE  
ASSOCIATION OF  
**FEEDING  
AMERICA**

[HungerFreeFlorida.org](http://HungerFreeFlorida.org)

# Who We Are...



**FLORIDA**  
**ASSOCIATION OF**  
**FOOD BANKS**



# The Need

1 in 5



3.6 Million Floridians

1 in 4



1.1 Million Children



**FLORIDA**  
ASSOCIATION OF  
**FOOD BANKS**

# What We Do



**FLORIDA**  
**ASSOCIATION OF**  
**FOOD BANKS**

# Food Bank Services

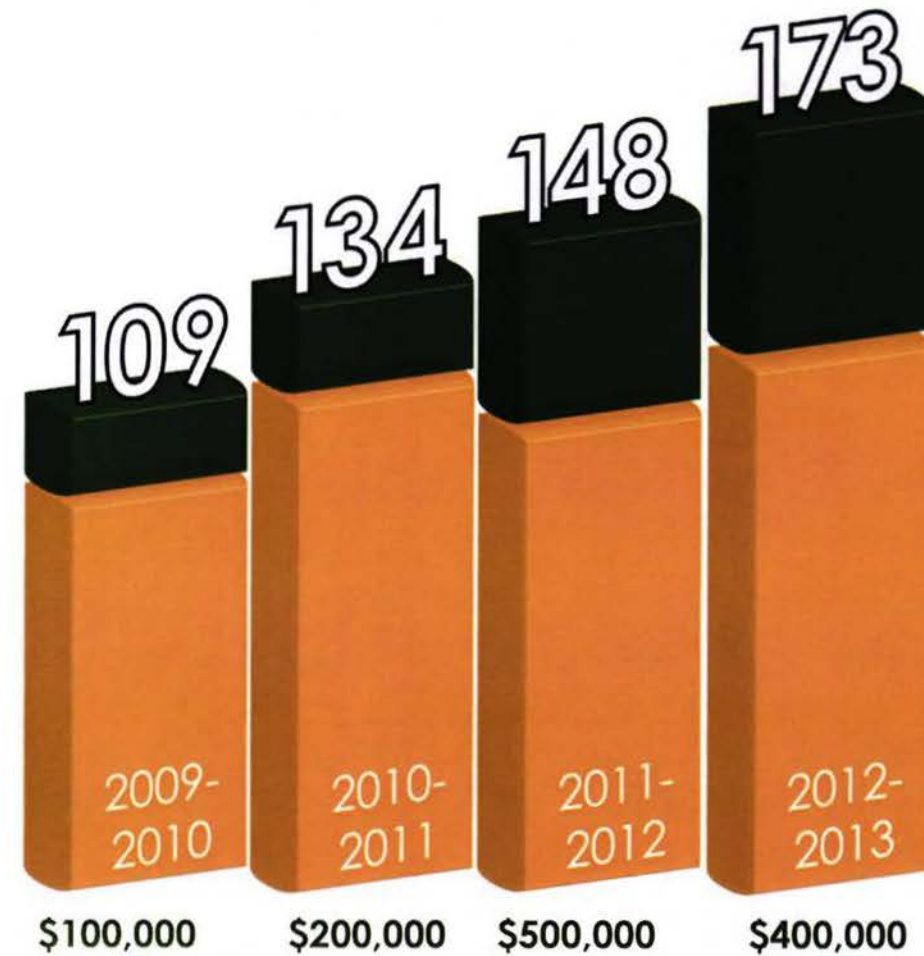
TEFAP Distribution in 65 Counties  
Fresh Produce Distribution Statewide

- Retail Recovery, Sorting & Redistribution
- Backpack Programs
- Summer Feeding
- Kids Café
- School Pantries
- Nutrition Education
- Benefits Connection
- Job Training
- Power Purchase Program
- State Coordinated Disaster Response
- Mobile Pantries
- Community Gardens



**FLORIDA**  
**ASSOCIATION OF**  
**FOOD BANKS**

# Leveraging State Funding



## Impact

Feed **3.6 million people** every year

Food Distribution up 140%

Wholesale Value \$277M

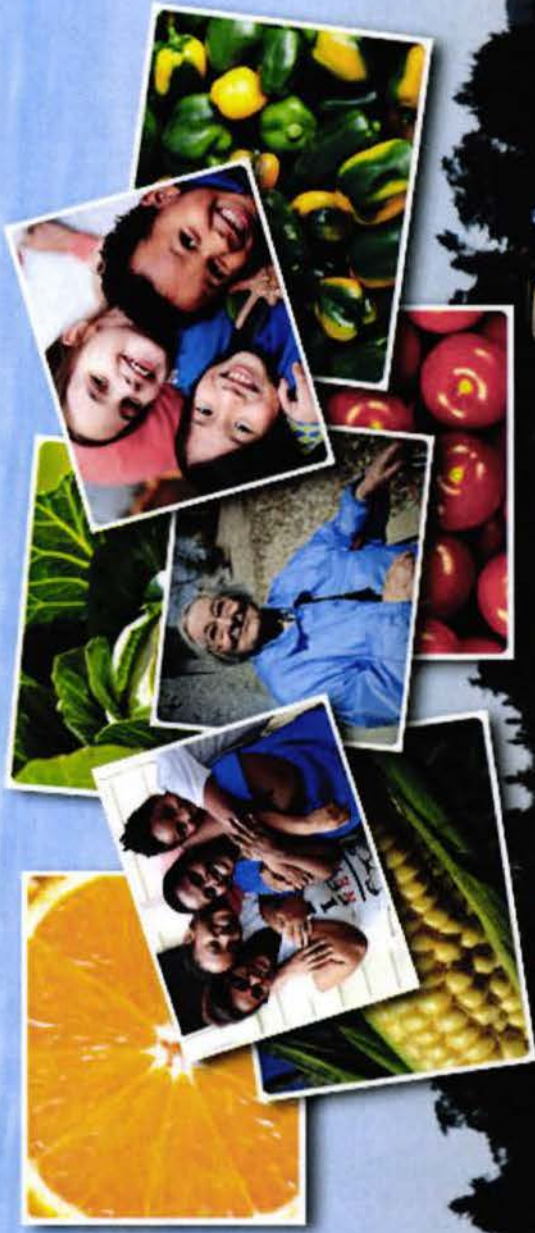


**FLORIDA**  
**ASSOCIATION OF**  
**FOOD BANKS**



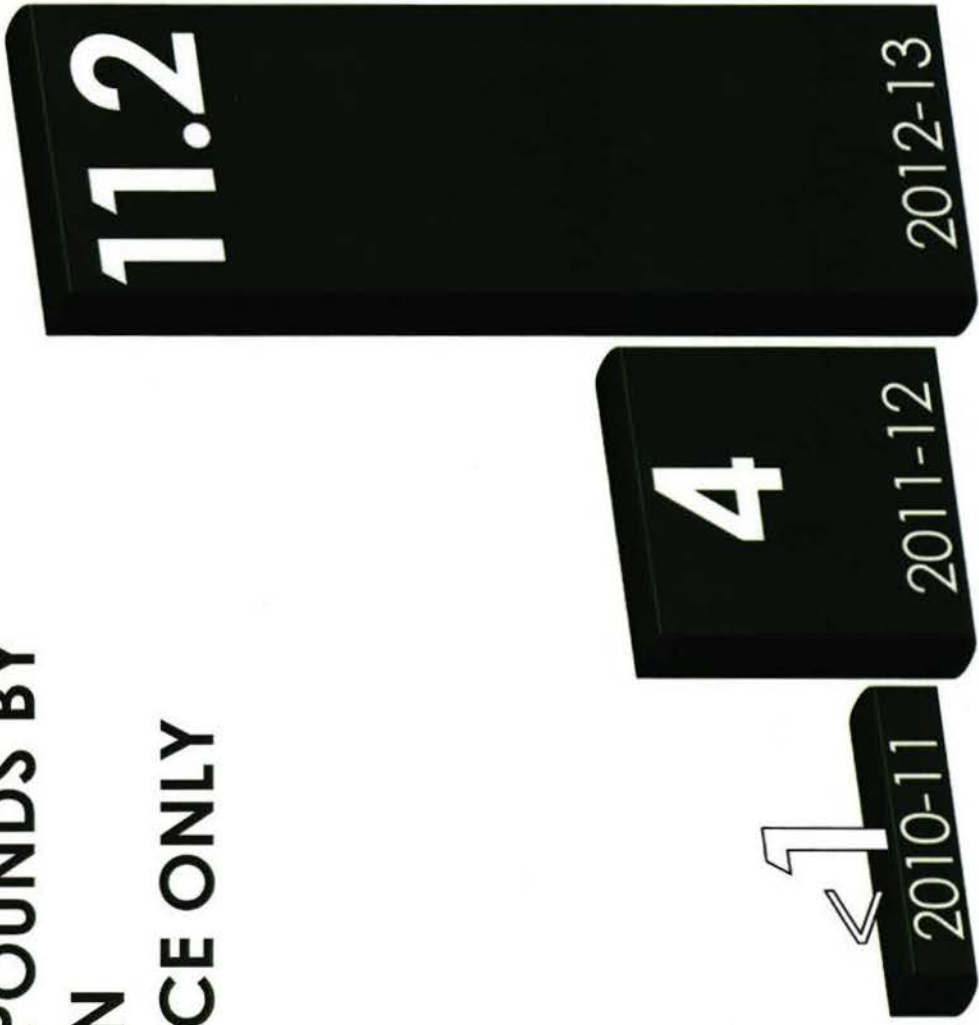
# FARMERS FEEDING FLORIDA

*Fresh Solutions for Fighting Hunger*



*Rescuing & Redistributing unmarketable  
produce to hungry Floridians in all 67 Counties*  
**HungerFreeFlorida.org**

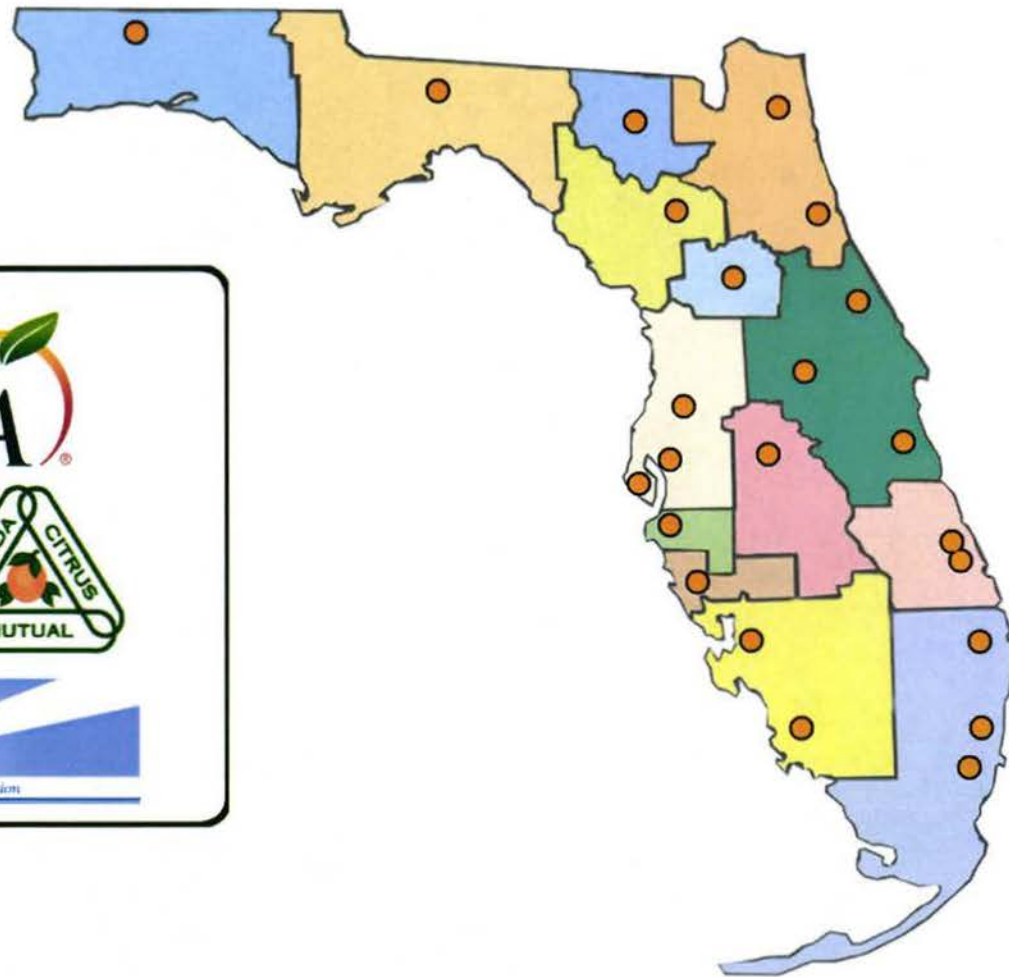
**TOTAL POUNDS BY  
MILLION  
PRODUCE ONLY**



**FLORIDA  
ASSOCIATION OF  
FOOD BANKS**



Endorsed By:



Local Sources,  
Statewide Distribution



**FLORIDA**  
ASSOCIATION OF  
**FOOD BANKS**

# Increase Food Distribution 2014-2015

\$3 Million to support the acquisition and distribution of an additional 9 Million Pounds of fresh fruits and vegetables from Florida Growers & Packers (25% increase)



- Out-of-Pocket costs to Growers/Packers
- Logistics & Distribution



**FLORIDA**  
ASSOCIATION OF  
**FOOD BANKS**

# Expand Child Nutrition Programs



- Identify gaps in access
- Develop & offset start-up costs for new 60 new SFSP providers/sites
- Expand other community mechanisms
- 20% increase in nutritious meals to Florida's children



**FLORIDA**  
**ASSOCIATION OF**  
**FOOD BANKS**



## INSTRUCTIONS

Go to House Agriculture & Natural Resources Appropriations Subcommittee website, click on General Publications link.

Click on the Instructions .pdf document. Click on the [application](#) link and Open the Excel document. It may take a minute to download.

1. Click the Enable Editing button, usually located near the toolbar above, to activate the sheet. (If you have removed the security settings from Excel options, you may not get this button and the form may already be active.)

2. Click the View Data Entry Form button to display the Water Projects Application form

Enter all the fields in one sitting. Fields with tooltips have labels that are shaded yellow (for text fields) or purple (for numeric and date fields). If you pass your mouse over the labels, you will get more information about the data to be entered in that field. Note that this form has four tabs. Please provide responses that are as complete as possible.

3. Once you have completed your data entry, review the information that you have entered. Upon completing the review, click the Add Record and Close button. The information entered will be written to Excel and the Application Form will close returning you to the Main page. Once the record is closed, you cannot make revisions to the data. If revisions are necessary, you must start over with a new record.

4. If you would like to keep a record of your application, click the Print Preview button below.

5. Finally, click one of the email buttons, as described below, to submit your application.

a. If you are using [Microsoft Outlook](#) as your email client, click the Outlook button. Please be sure to provide a clear subject heading (Water Project: and your particular water project title after the colon).

b. If you are using an email client other than Outlook, click the Non-Outlook Users button. A Subject heading will be automatically entered for you.

c. If you are using [Hotmail or some other web-based email](#), save the file, logon to your web email account and manually attach the file before sending it to Stephanie Massengale at the address provided below. Please use a subject heading starting with the words Water Project: and your particular water project title after the colon.

If you have any questions regarding the form, please contact Stephanie Massengale of the Agriculture and Natural Resources Appropriations Subcommittee at [Stephanie.Massengale@laspbs.state.fl.us](mailto:Stephanie.Massengale@laspbs.state.fl.us).

If you have additional files to send as part of the Water Projects, you may email them with the application. If you are not using Outlook, please submit them as separate attachments. Please use **Water Project:** and your particular water project title after the colon.