



Health Quality Subcommittee

Wednesday, January 8, 2014
9:30 AM - 11:30 AM
306 HOB

Will Weatherford
Speaker

Kenneth L. "Ken" Roberson
Chair

Committee Meeting Notice

HOUSE OF REPRESENTATIVES

Health Quality Subcommittee

Start Date and Time: Wednesday, January 08, 2014 09:30 am
End Date and Time: Wednesday, January 08, 2014 11:30 am
Location: 306 HOB
Duration: 2.00 hrs

Overview of the James and Esther King Biomedical Research Program and the William G. "Bill" Bankhead, Jr., and David Coley Cancer Research Program

Status of the Cancer Center of Excellence Award Program

NOTICE FINALIZED on 12/20/2013 12:35 by Iseminger.Bobbye

BIOMEDICAL RESEARCH GRANT PROGRAMS

January 8, 2014

Health Quality Subcommittee

Dr. Celeste Philip, MD, MPH

Deputy Secretary for Health

Deputy State Health Officer for Children's Medical Services

Protect, promote and improve the health of all people in Florida.



FUNDING BACKGROUND

- Lawton Chiles Endowment Fund created in 1999 (Section 215.5601 F.S.)
- \$150 million investment set-aside used for research
- Annual proceeds support research
 - *James & Esther King* Biomedical Research Program (Section 215.5602 F.S.)
 - *Bankhead-Coley* Cancer Research Program (Section 381.922 F.S.)

JAMES AND ESTHER KING BIOMEDICAL RESEARCH PROGRAM

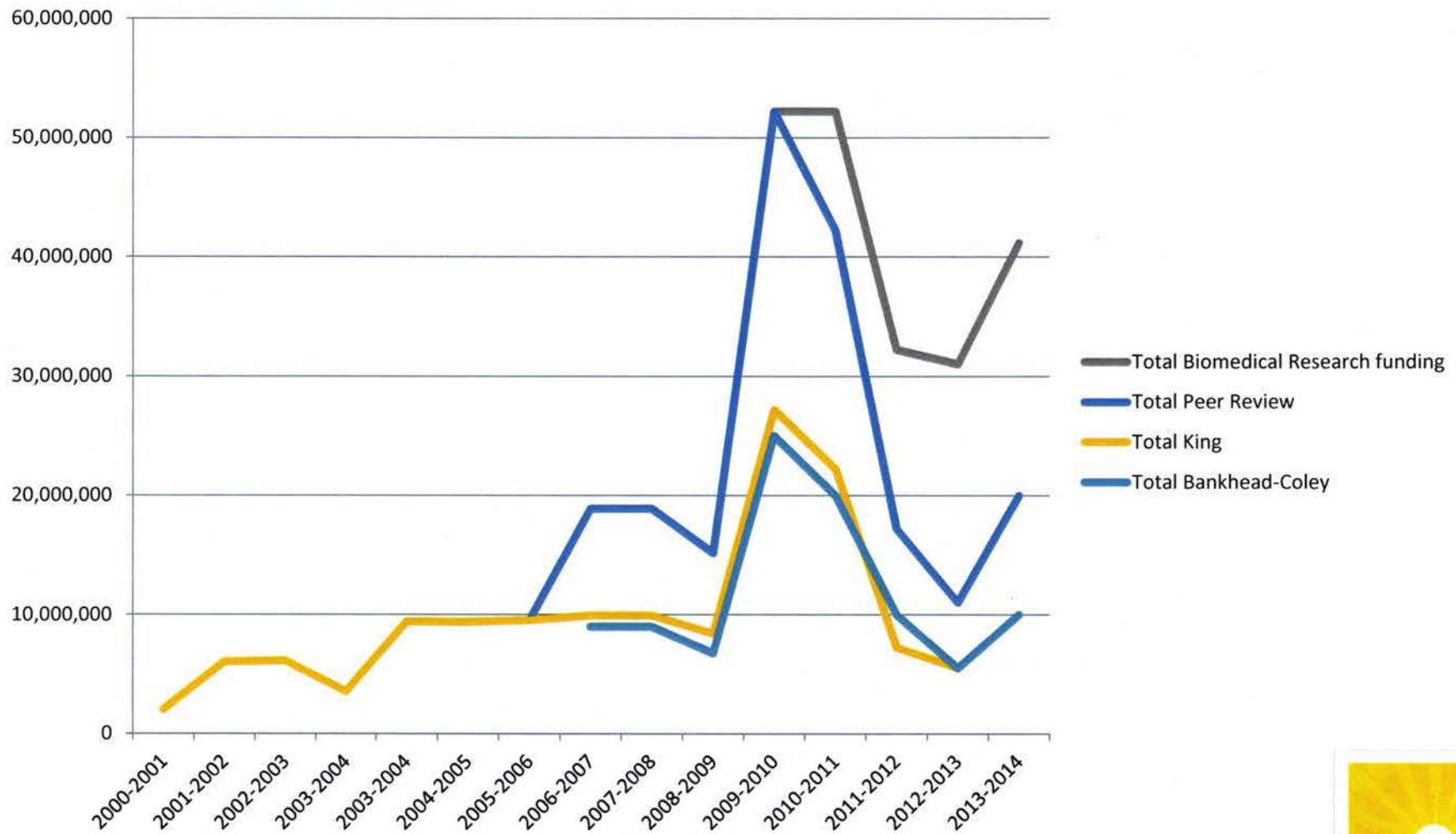
- Priority: research to prevent, cure disease
- Goals
 - Improve the health of Florida's families
 - Expand foundation of biomedical knowledge
 - Improve quality of state's academic health centers
 - Increase research funding
 - Stimulate economic activity



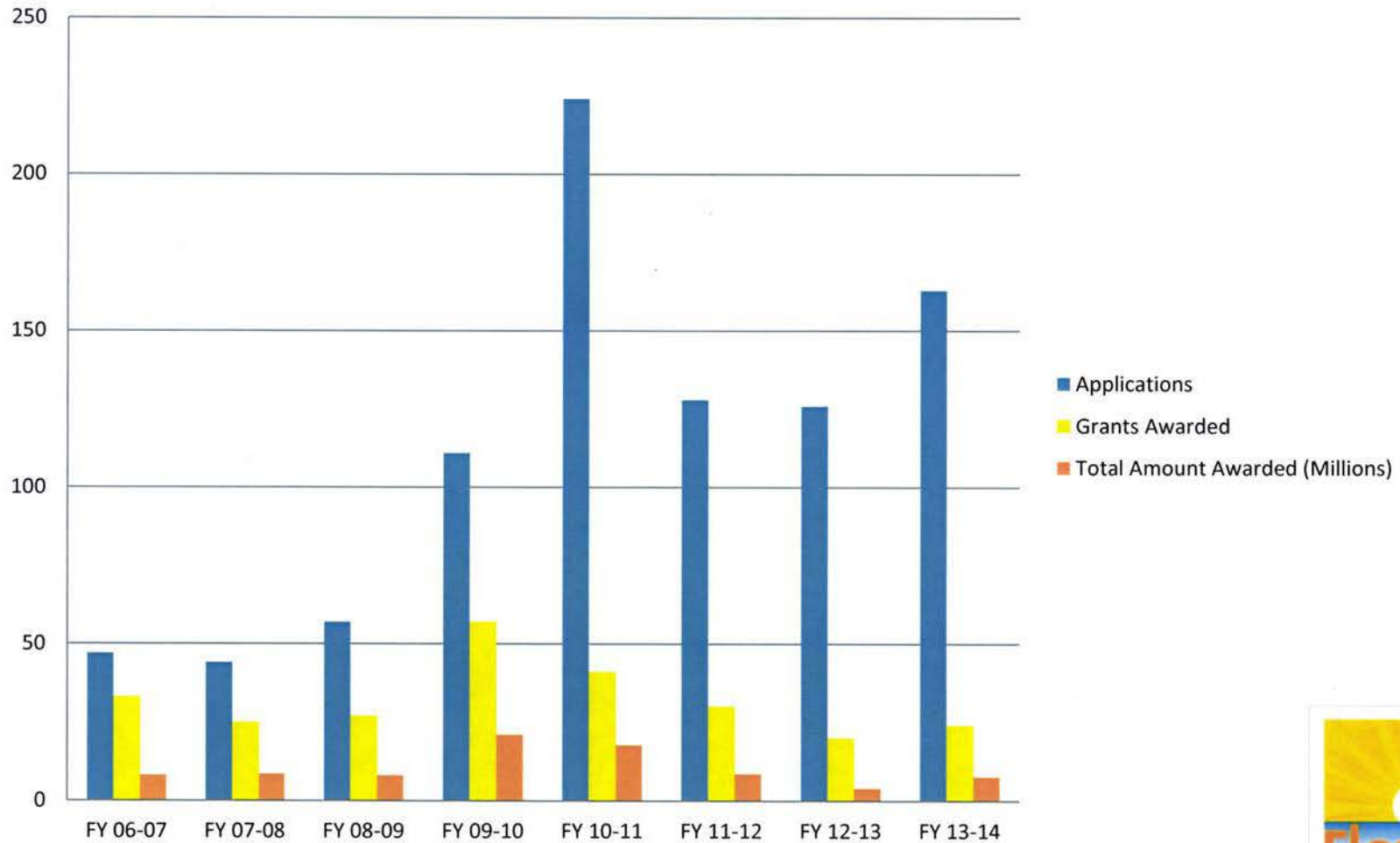
BANKHEAD-COLEY CANCER RESEARCH PROGRAM

- Priority to research to cure cancer
- Goals
 - Expand cancer research capacity
 - Improve research & treatment through greater participation in clinical trials networks
 - Reduce impact of cancer on disparate groups

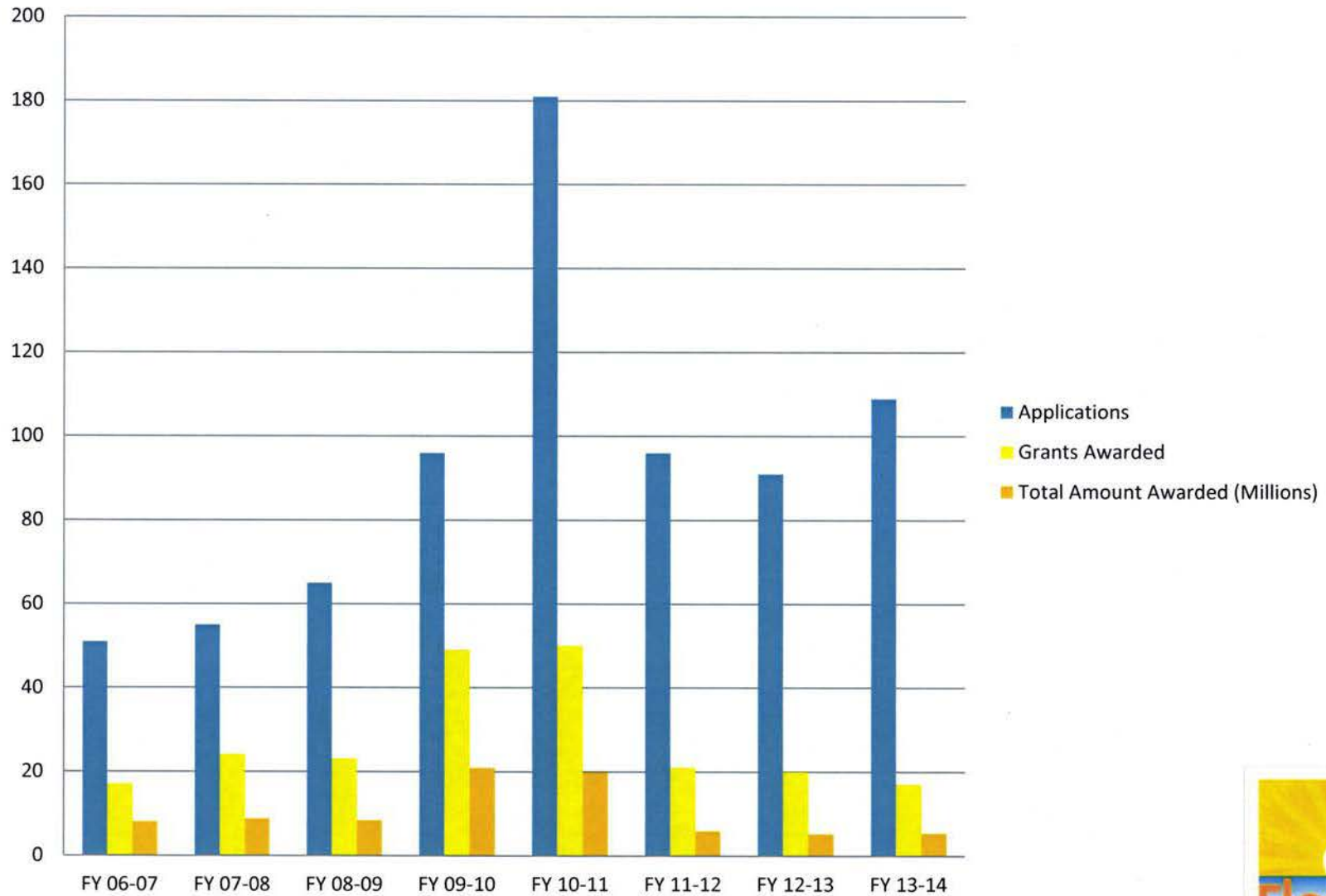
RESEARCH FUNDING



BANKHEAD-COLEY APPLICATIONS AND FUNDED PROJECTS



KING APPLICATIONS AND FUNDED PROJECTS



DIRECT APPROPRIATIONS TO RESEARCH INSTITUTIONS

GAA	Moffitt	Shands	Sylvester	Sanford- Burnham	Torrey- Pines
2010-2011	10,000,000				
2011-2012	5,000,000	5,000,000	5,000,000		
2012-2013	5,000,000	7,500,000	7,500,000	3,000,000	
2013-2014	7,050,000	7,050,000	7,050,000	5,600,000	3,000,000
Total	27,050,000	19,550,000	19,550,000	8,600,000	3,000,000

BIOMEDICAL RESEARCH ADVISORY COUNCIL

- Advises State Surgeon General
- Members: 3-year terms
 - Governor: 4
 - Senate President: 2
 - Speaker of the House: 2
 - American Cancer Society, American Heart Association, & American Lung Association: 1 each, indefinite

CANCER CONTROL AND RESEARCH ADVISORY COUNCIL (CCRAB)

- Created within the H. Lee Moffitt Cancer Center and Research Institute
- Advises the Board of Governors, State Surgeon General
- Members: 4-year terms
 - Governor: 33
 - Senate President: 1
 - Speaker of the House: 1



OVERVIEW OF PEER-REVIEW PROCESS

- Competitive process for all proposals
- Peer-review of scientific merit
- Proposals ranked by scientific merit
- BRAC recommendations based on merit & available funding



PEER REVIEWERS

- National scientific experts outside Florida
- Free from conflicts of interest
- Expertise
 - Cancer
 - Heart disease
 - Lung disease
 - Behavioral health



PEER REVIEW PRINCIPLES

- Assessment by nationally-recognized experts
- Transparency of criteria & results
- Impartiality (no conflicts of interest)
- Fairness in funding, consistent with merit
- Efficiency in peer review process



QUALITY OF PEER REVIEW

- Same criteria as National Institutes of Health
- National recognition of Florida's program
 - National Cancer Institute recognizes Florida's grant review
 - Florida's funded proposals enable researchers to be eligible to apply for NCI funding

PEER REVIEW CRITERIA

- Significance
 - Cancer and/or tobacco-related disease
 - Health impact
- Markers for success
 - Investigator qualifications
 - Institutional support
- Innovative approach



TYPES OF FUNDING OPPORTUNITIES

- Awards: ≤ 5 years
 - Investigator-initiated research
 - Grants for new researchers
 - Grants to institutions
- Researchers at any university or research institution in Florida are eligible



BREAST CANCERS (BEST) STUDY

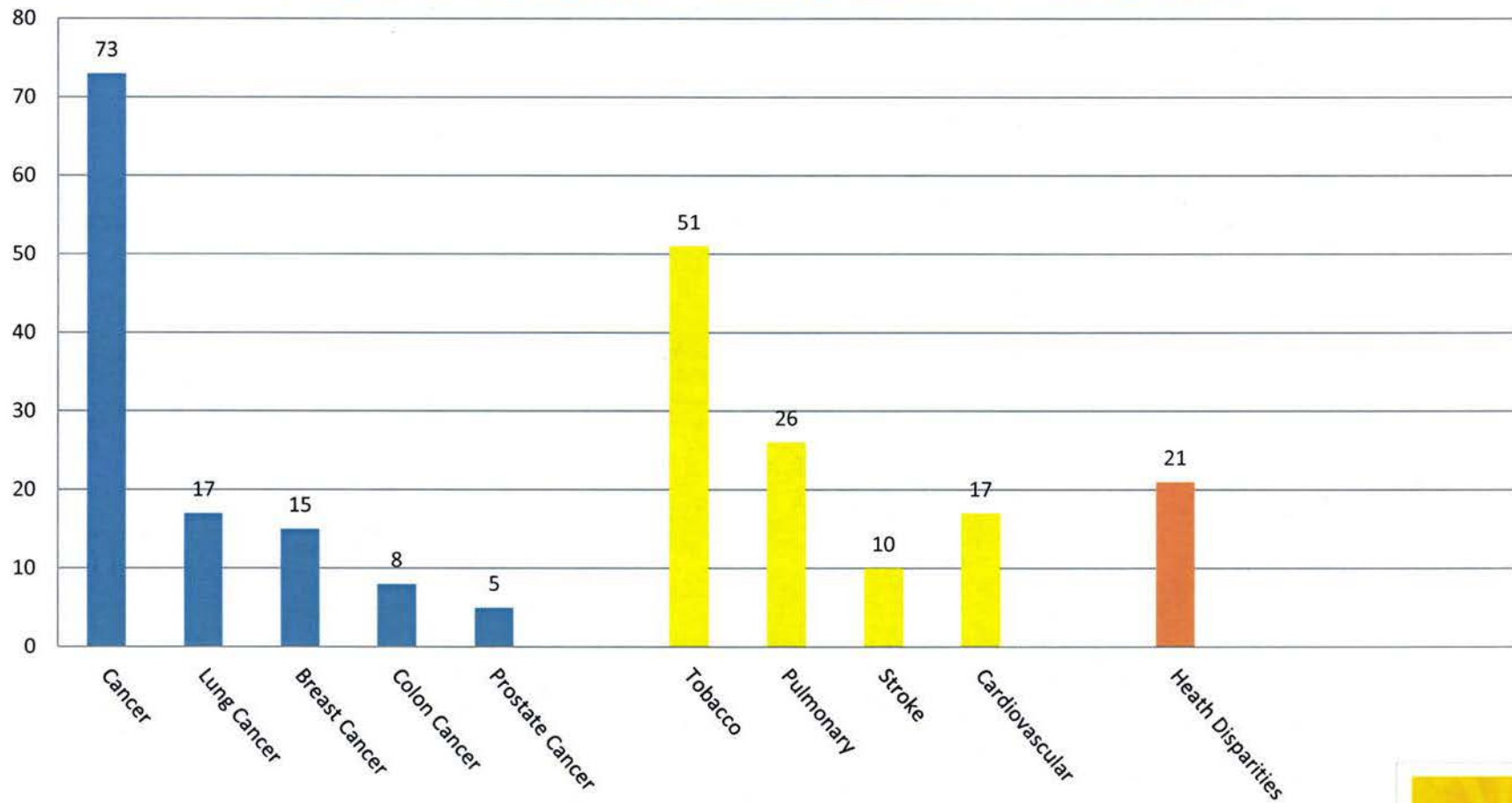
- Black women: younger age, aggressive breast cancer
- Benefit to participants: screening & counseling
- Disseminated results to community
- Involved Florida's cancer registry
- Led to \$903,000 in outside funding



IMMUNOTHERAPY FOR LUNG CANCER

- Lung cancer: leading cause of cancer deaths
- New investigator
- First-in-human study of lung cancer vaccine
- Continuing Phase II study

AREAS OF RESEARCH - ACTIVE GRANTS FY 2012-2013



CANCER CENTERS OF EXCELLENCE

- Cancer Center of Excellence Award (section 381.925, Florida Statutes)
 - Performance Standards, Rating System, Rating Standards
 - Schedule for two application cycles annually
 - Application form
- Florida institutions recognized nationally as preferred destination for quality cancer care

JOINT COMMITTEE

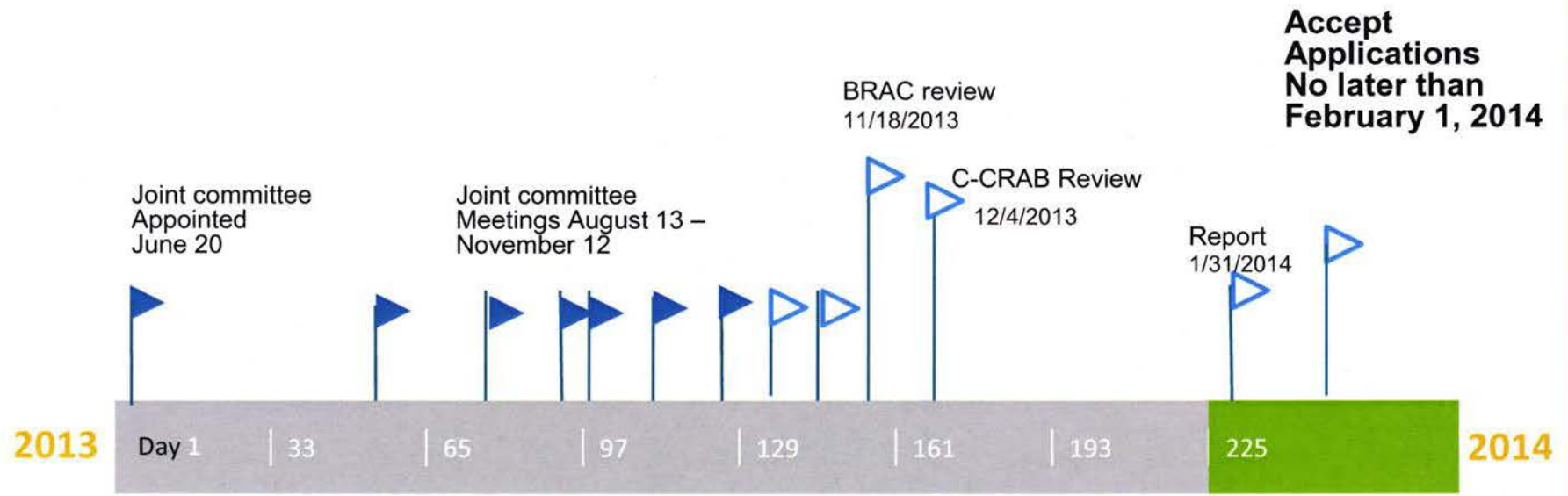
- 13 members
 - 7: Cancer Control & Research Advisory Board (C-CRAB)
 - 6: Biomedical Research Advisory Board (BRAC)
- January 1, 2014: rigorous performance measures, rating system, rating standard
 - Approved by BRAC, C-CRAB
 - Review every 3 years

ELIGIBLE ORGANIZATIONS

- Licensed to provide health care in Florida
- Accredited by Commission on Cancer, American College of Surgeons
- Participate in regional cancer control collaborative
- Meet all other standards



IMPLEMENTATION STATUS - COMPLETE

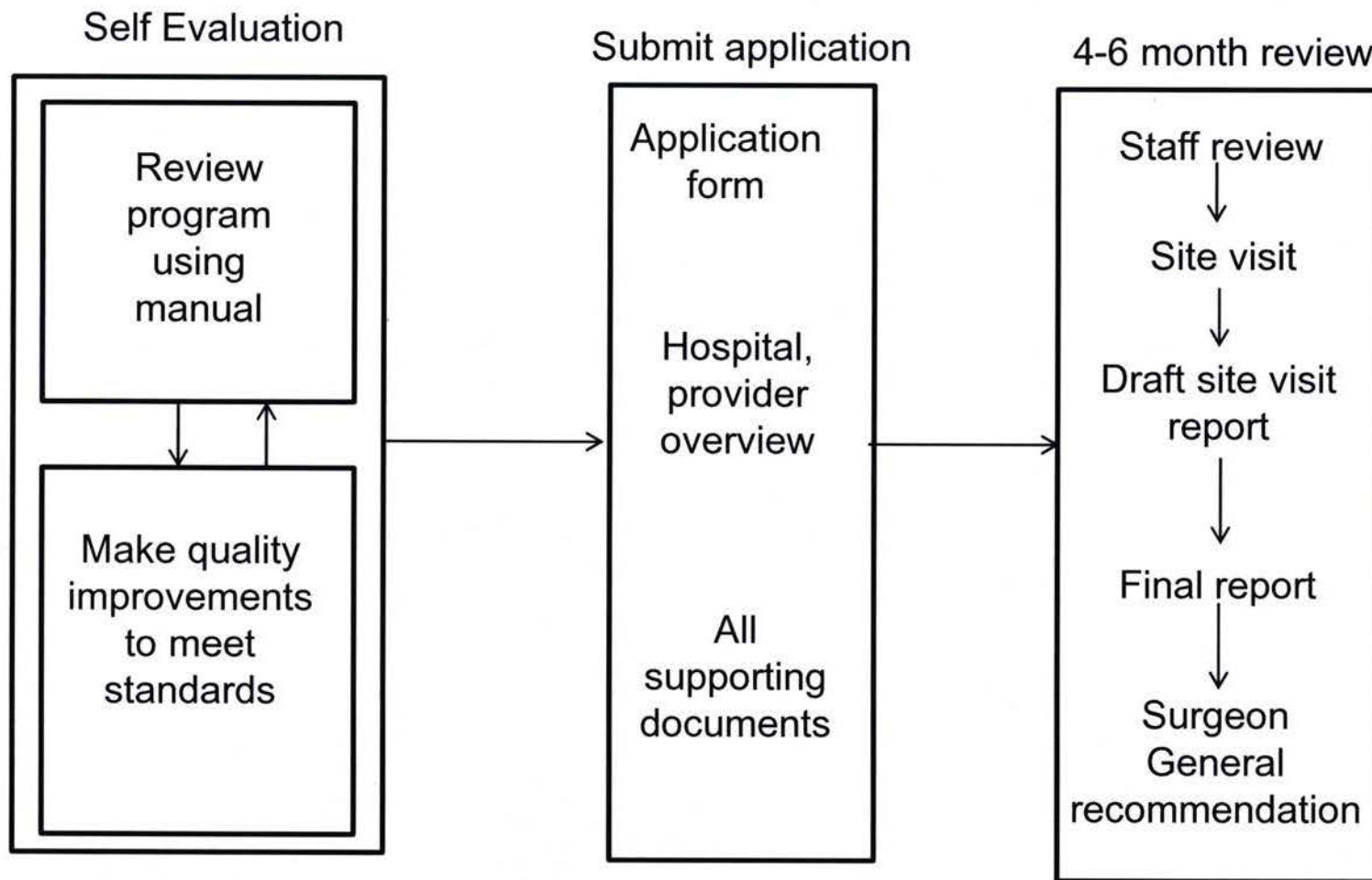


PROGRAM MANUAL

- Explanation
- Legal & regulatory requirements
- Required written materials
- Materials that may be used to meet standards
- Description of outcomes



APPLICATION AND REVIEW PROCESS



SUMMARY

- Biomedical research grant program
 - Competitive peer review process
 - Enhances research capacity
 - Increases external funding
 - Grows Florida's economy

- Cancer Center of Excellence
 - Applications by February 15, 2014
 - First designations: September through December 2014
 - Second application cycle starts September 2014

