



Judiciary Committee

**Wednesday, February 11, 2015
10:00 AM - 12:00 PM
Sumner Hall (404 HOB)**

MEETING PACKET

**Steve Crisafulli
Speaker**

**Charles McBurney
Chair**

Committee Meeting Notice

HOUSE OF REPRESENTATIVES

Judiciary Committee

Start Date and Time: Wednesday, February 11, 2015 10:00 am
End Date and Time: Wednesday, February 11, 2015 12:00 pm
Location: Sumner Hall (404 HOB)
Duration: 2.00 hrs

Department of Corrections Overview
Department of Juvenile Justice Overview

NOTICE FINALIZED on 02/04/2015 15:42 by Ingram.Michele



FLORIDA DEPARTMENT OF JUVENILE JUSTICE

PART OF THE COMMUNITY, PART OF THE SOLUTION



Roadmap to System Excellence

House Judiciary Committee
February 11, 2015

Rick Scott, Governor

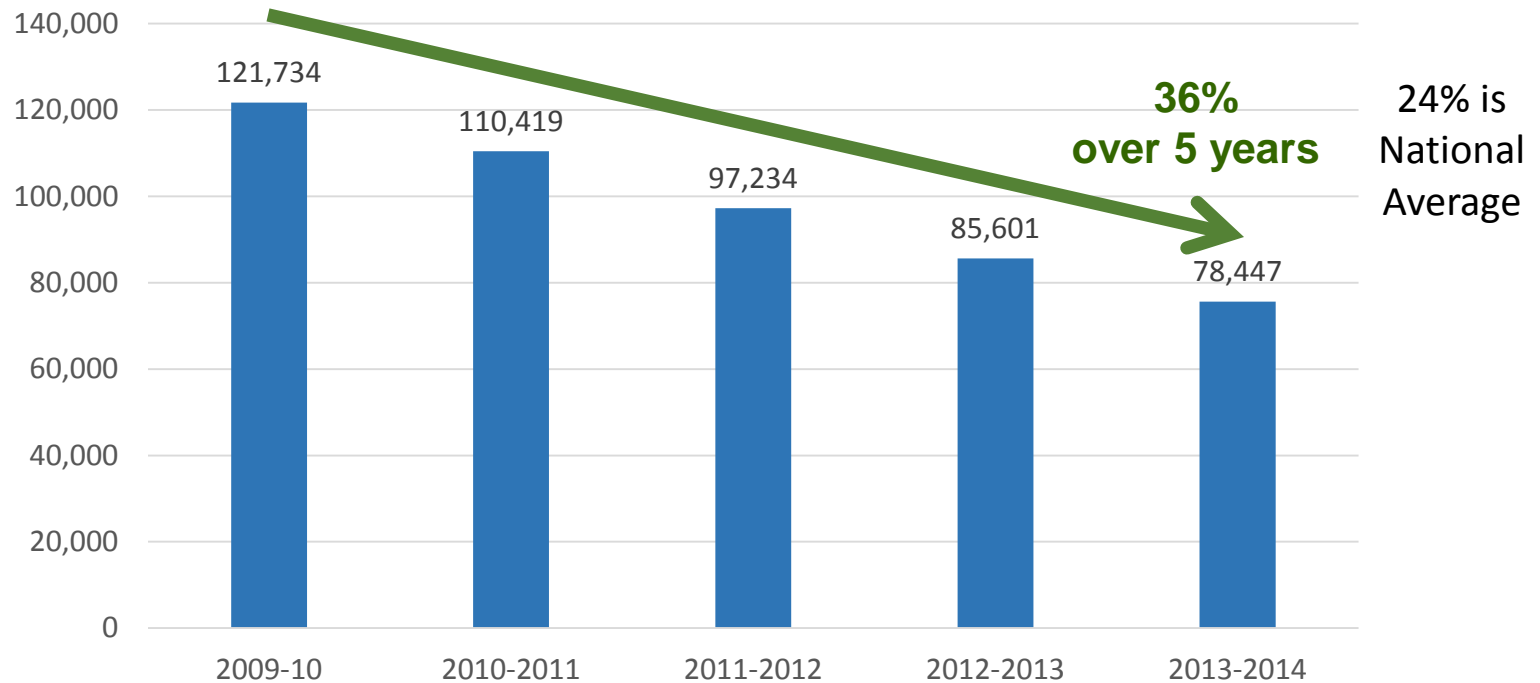
Christina K. Daly, Secretary¹

Roadmap to System Excellence



Florida Delinquency Declines

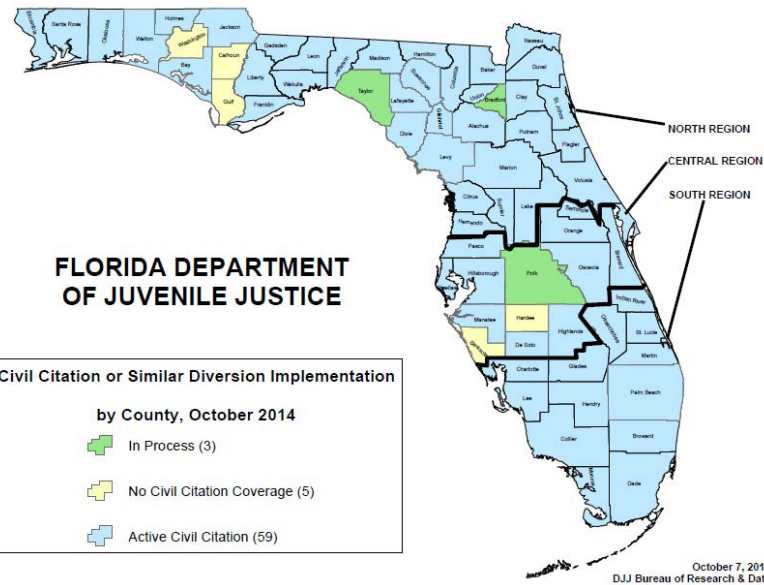
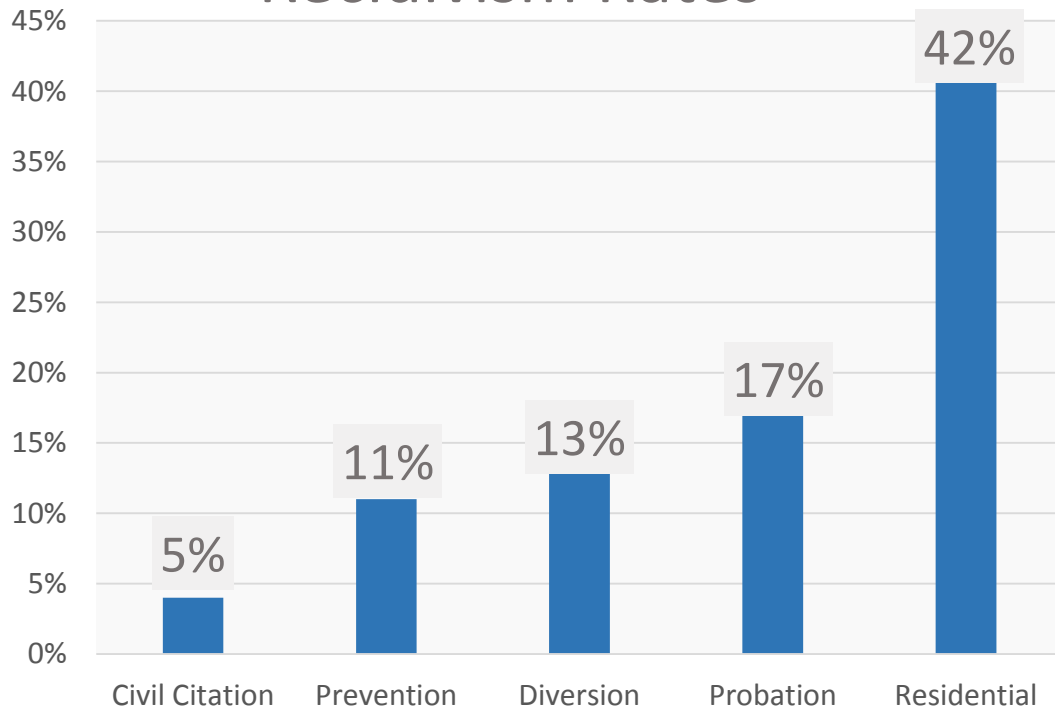
Delinquency Arrests
FY 2009-10 through FY 2013-14



Civil Citation Process

Civil Citation process increased from 11 to 59 counties since 2011

Recidivism Rates

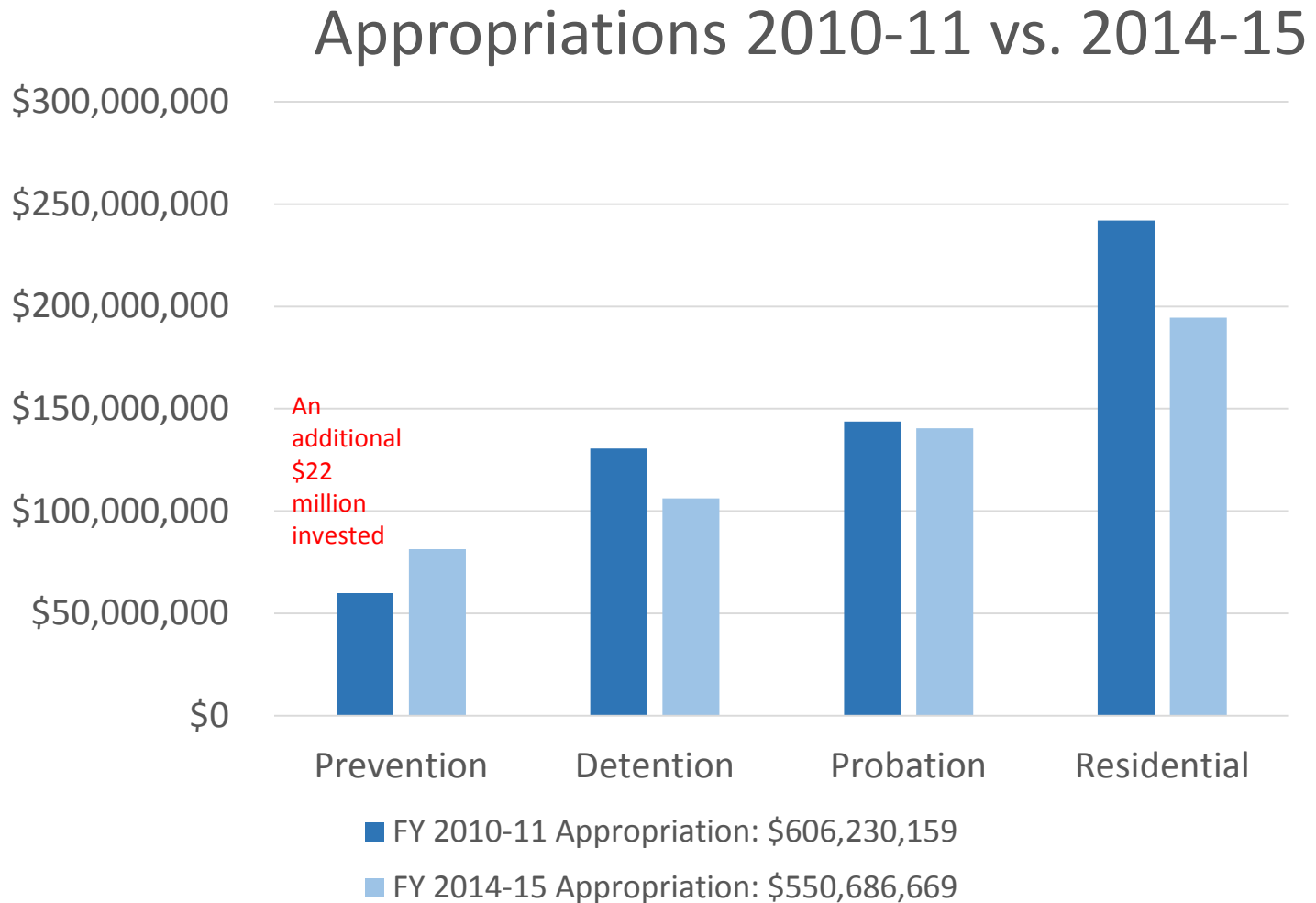


In progress:
Bradford, Polk, Taylor

No Civil Citation:
Calhoun, Gulf, Hardee,
Sarasota, Washington

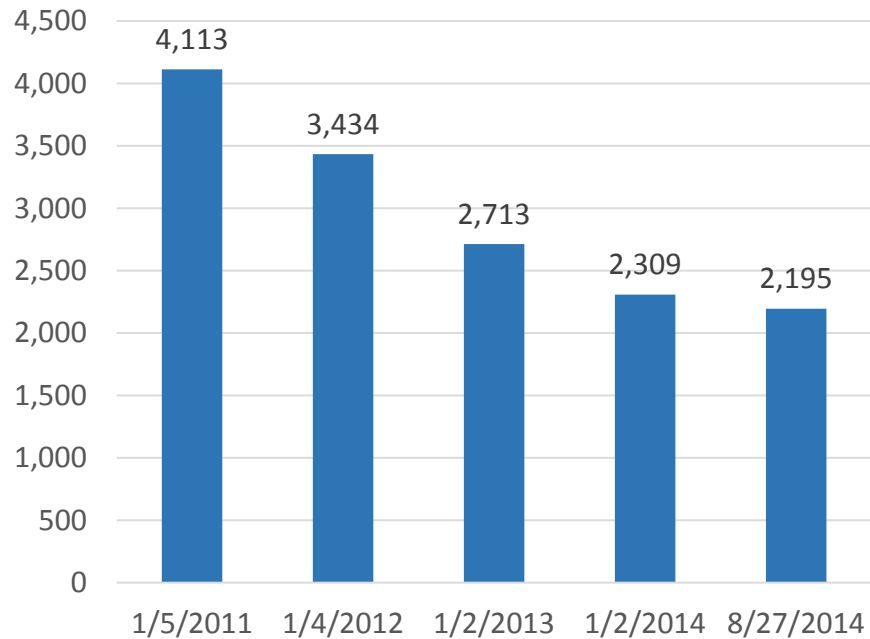


Resource Realignment



Service Delivery Shifts

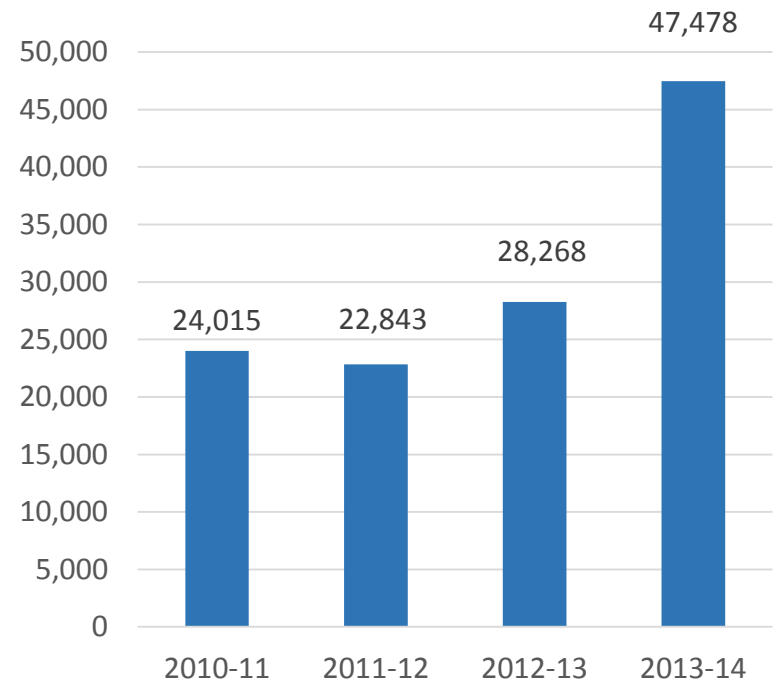
Residential Bed Reductions



January 2011-August 2014

47% decrease

Youth Served in Prevention



FY 2010-2011 to FY 2013-2014

98% increase



Increase in Prevention Services

From \$59 to \$81 million

Children in Need of Services/Families in Need of Services (CINS/FINS)

Florida Association of Big Brothers Big Sisters

Florida Alliance of Boys and Girls Clubs

North Carolina Outward Bound School

PACE Center for Girls

Prodigy



Statute Revision: HB 7055

- Aligned statutes with best practices
- Allowed for implementation of promising practices
- Put proper emphasis on prevention
- Codified reforms that provide individualized treatment approaches aimed toward rehabilitation and optimal outcomes
- Maximized public safety
- Ensured wise stewardship of taxpayer resources



Community and Youth Engagement

- Faith Community Partners Network
- Community Conversations
- Bridging the G.A.A.P.
(Gaining Appreciation by Adjusting Perspectives)
Conversations
- Florida Youth Commission
- Circuit Advisory Boards
- State Advisory Group



Stop Now and Plan (SNAP)

- Evidenced based, gender-specific, cognitive behavioral and family focused model
- Boys (and girls) ages 6-11 and their parents
- Intervention prior to children entering or going deeper into juvenile justice system
- Collaborating with community partners to deliver services



Trauma-Informed Care

- Staff Suitability Testing and Training
- Academy and In-service Training
- Paws for Justice Program
- Teens Assisting Puppies Program
- Therapeutic Activities; Soft Rooms; Comfort Items
- Trauma Responsive Practices



Normalcy Enhancements

Before.....



After.....



Human Trafficking

Child Sex Trafficking Victim Identification Tool

- To be used at all Juvenile Assessment Centers and probation offices
- All direct care staff and community partners trained
- Identify victims to ensure their safety and proper services and treatment



Respite Beds

- Youth Charged with Domestic Violence
 - Includes those previously adjudicated for other issues
 - Safe and appropriate alternative to secure detention
 - Includes family services
 - 23 beds; 8,395 bed care days annually statewide
 - Since February 1, 2013: 1,528 youth diverted and 12,206 days of respite care received
- Probation Youth
 - When no other alternative exists
 - 18 beds + rate agreements
 - Since July 1, 2013: 32 beds and 1,866 days of respite care received

*24-hour awake supervision
Assessment
Orientation
Case management
Medical and mental health services
Education
Religious/spiritual opportunities
Recreational and leisure time activities
Community involvement opportunities
Transportation*



Juvenile Justice System Improvement Project



Florida Department of Juvenile Justice Disposition Recommendation Matrix (Staff must always begin with the least restrictive setting within a particular disposition category. See SDM guidelines)

Most Serious Presenting Offense	PACT Risk Level to Re-Offend			
	Low-Risk to Re-offend	Moderate-Risk to Re-offend	Moderate/High-Risk to Re-offend	High-Risk to Re-offend
1st TIME MISDEMEANOR ¹	Level 1	Level 1	N/A	N/A
Minor ²	Level 2 or 3a	Level 2 or 3a	Level 2 or 3a-c	Level 3a-c or 4
Serious ³	Level 2 or 3a	Level 2 or 3a-b Least restrictive not yet tried	Level 3a-c or 4	Level 3a-c or 4
Violent ⁴	Level 2 or 3a-b	Level 2, 3a-c or 4	Level 3a-c, 4 or 5	Level 3a-c, 4 or 5

¹ - First time misdemeanor offenders with no history of arrest or participation in alternatives to arrest. Under Section 985.12, Florida Statutes, all first time misdemeanants are eligible for civil citation. Youth deemed ineligible for civil citation (based on community standards) should be reviewed under the "Misdemeanor" category based on their PACT Risk Level to Reoffend.

² - All misdemeanor offenses.

³ - Felony offenses that do not include violence.

⁴ - Violent felony offenses (does not include misdemeanor assault/battery, which is captured under "minor").

Level 1 - Alternatives to Arrest

Level 2 - Diversion & Non-DJJ Probation

Level 3 - Community Supervision

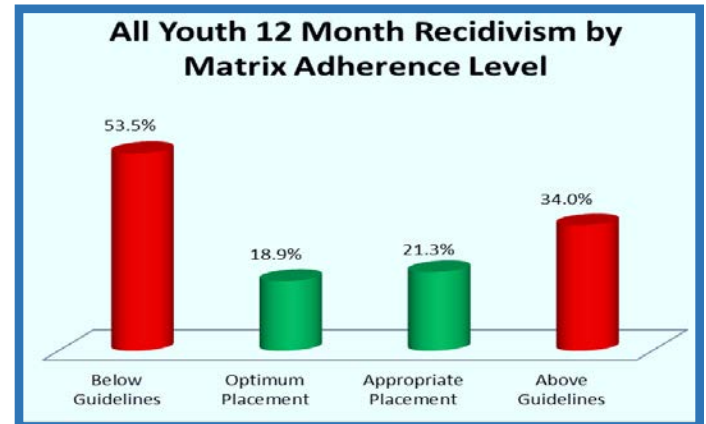
Level 4 - Non Secure Residential Commitment (Low & Moderate-Risk Programs)

(3a) - Probation supervision

Level 5 - Secure Residential Commitment (High & Maximum-Risk Programs)

(3b) - Probation enhancement services (ART, LifeSkills, etc.)

(3c) - Day Treatment, MST, FFT



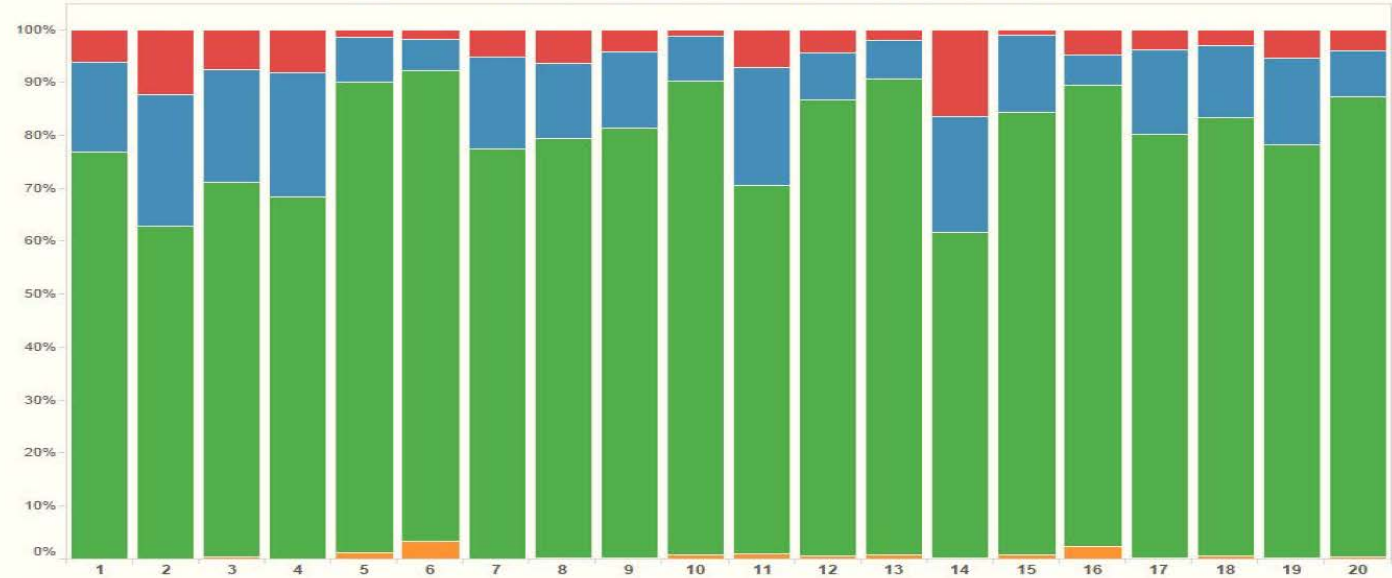
Dispositional Matrix Report

Dispositional Matrix Report Florida Department of **JUVENILE JUSTICE** *Our Children, Our Future*

Disposition Multiple Values PACT Risk level All Gender All Race/Ethnicity All

■ Above Guidelines
 ■ Appropriate Placement
 ■ Optimum Placement
 ■ Below Guidelines
 Youth # or %
● Youth # ○ Youth %

Placements by Circuit October 2013 - September 2014



Optimum Placement	1,093	412	178	1,480	1,284	1,880	1,061	572	2,159	2,247	1,274	738	2,115	290	1,347	75	1,618	975	714	1,563	
Appropriate Placement	239	163	54	511	126	126	240	103	385	214	408	78	180	103	237	5	324	163	151	161	
Above Guidelines	89	81	19	178	19	37	68	46	109	29	131	36	43	78	15	4	75	33	48	69	
Below Guidelines				1	2	18	71	1	2	7	19	19	5	20	1	12	2	4	6	1	8

Questions about the data should be directed to Mark Greenwald by e-mail at mark.greenwald@djj.state.fl.us.
For more information visit <http://www.djj.state.fl.us/>



Standardized Program Evaluation Protocol (SPEP)

- Captures delinquency interventions

- Service Type
- Service Quantity/Dosage
- Service Quality
- Juvenile Characteristics



right services
right place
right way
right time
right youth



- Identifies program or service improvements needed
- Makes recommendations

Optimize intervention effectiveness and positive outcomes to reduce recidivism.



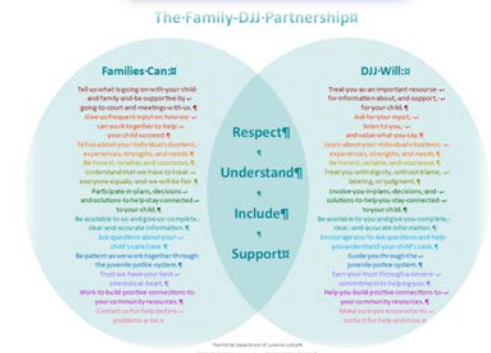
Probation and Community Intervention Effectiveness Improvements

- Juvenile Probation Officer (JPO) Transformation
deliver higher level of service to youth and families
- Effective Response System
incentivize successful behaviors toward probation completion and address technical violations immediately
- Effective Practices in Community Supervision (EPICS)
cognitive behavioral model to build relationship skills, address prescribed issues, and provide youth and family with prescribed dosage of treatment interventions

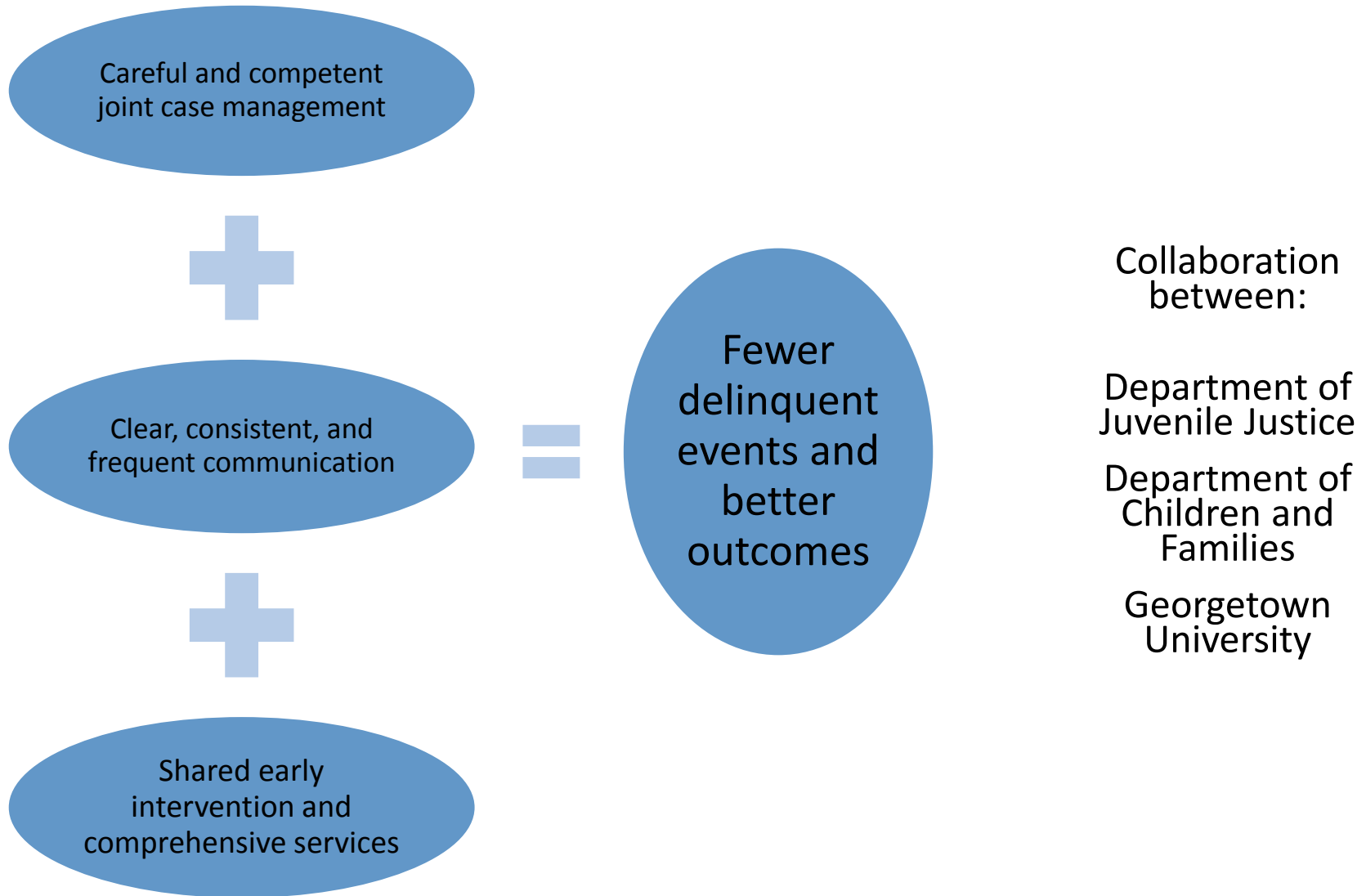


Family Engagement

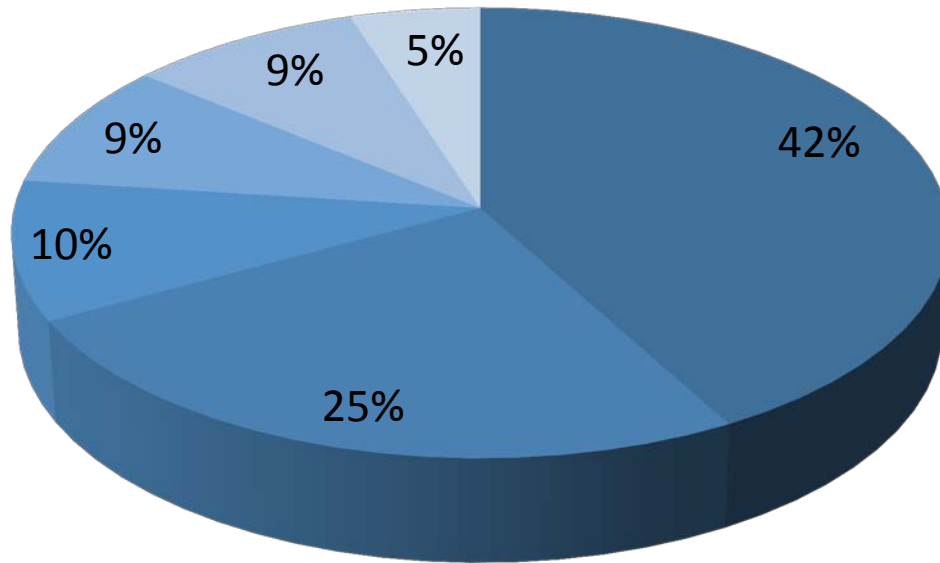
- In-home services via Redirections
- Surveyed needs and satisfaction of parents and youth
- Developed:
 - Orientation Videos
 - Educational Brochures
 - Parent and Youth Orientations
 - Parent Education Classes
 - Family Support Groups



Cross-over Youth Practice Model



Residential Program Services

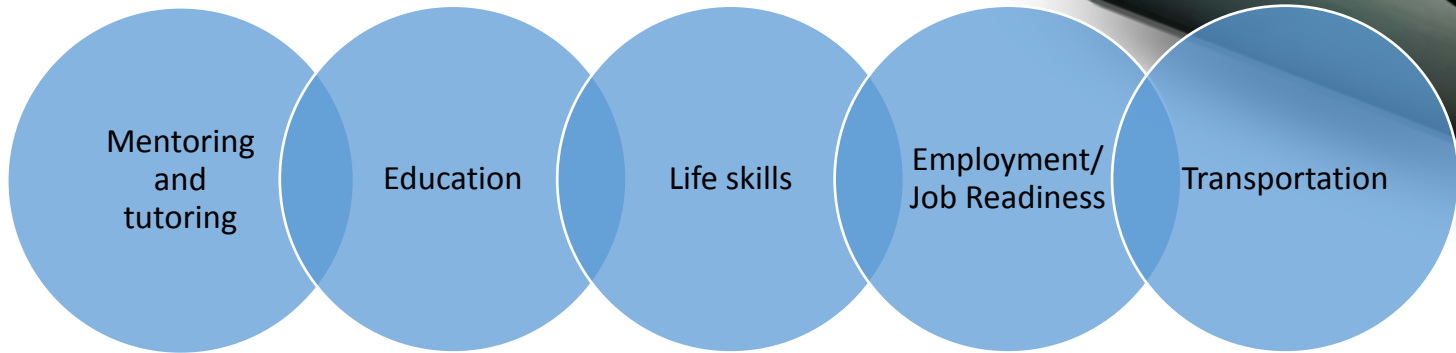


- Mental Health Overlay
- Substance Abuse Treatment
- Developmentally Disabled and Borderline Developmentally Delayed
- Sex Offender Treatment
- Intensive Mental Health Treatment
- Comprehensive Mental Health and Dual Diagnosis

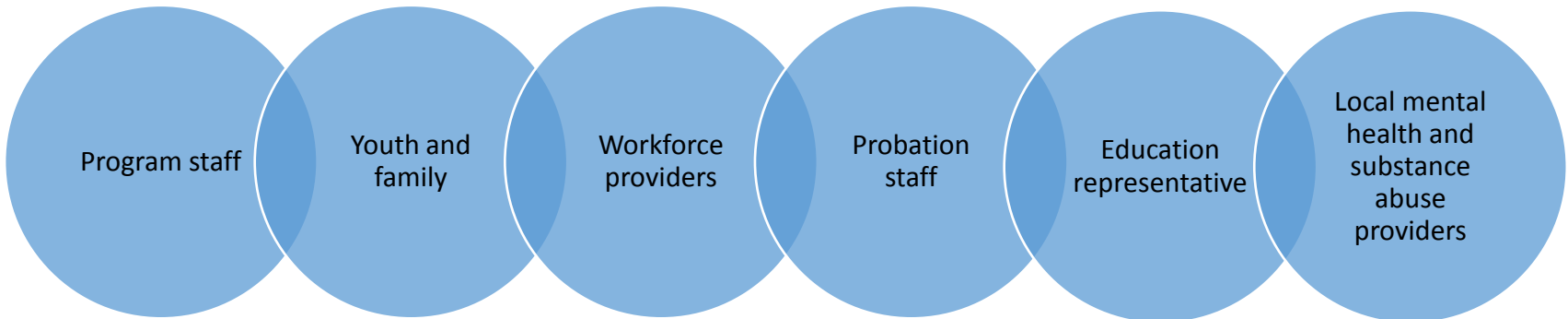
**Targeted Needs
Smaller Program Sizes
Effective Services**



Transition Services

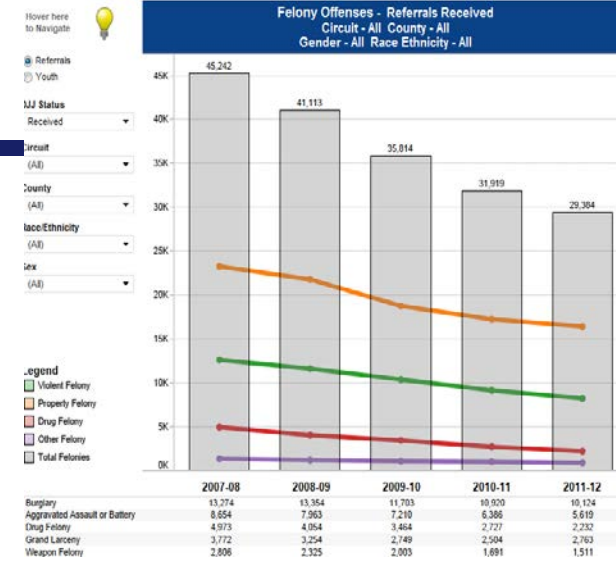


Statewide Community Re-entry Teams



Research and Data

- Delinquency Profile
- Briefing Sheets
- Agency Priority Scorecards
- Program Performance Dashboards



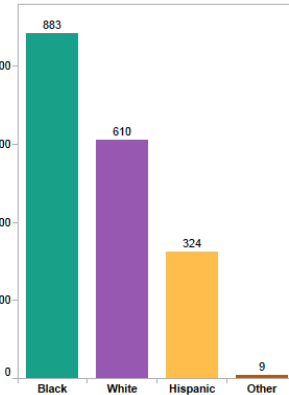
↑ A green arrow indicates improvement in a measure compared to the same month of the previous year.
● A green circle indicates no change from the same month of the previous year.
↓ A red arrow indicates that, compared to the same month of the previous year, an improvement is needed.

Note: For civil citation, the number shown represents a percentage point change compared to the same month of the previous year. For example, the 8 reported for January 2013 indicates that the percentage of eligible youth who received civil citation increased by eight percentage points from 25% to 33% since January 2012. For all other measures, percentages are a percentage change compared to the same month during the previous fiscal year. For example, the -8% reported for "Number of Delinquency Arrests" for January 2013 indicates a reduction by 8% from January 2012.

	NOV 2012	DEC 2012	JAN 2013	FEB 2013	MAR 2013	APR 2013	MAY 2013	JUN 2013	JUL 2013	AUG 2013	SEP 2013	OCT 2013
Eligible First Time Misdemeanants Issued Civil Citation by Law Enforcement* (% Point Change)												
	↑ 2	↑ 3	↑ 8	↑ 3	↑ 5	↑ 5	↑ 10	↑ 8	↑ 8	↑ 5	↑ 7	↑ 10
Number of Delinquency Arrests												
	↓-12%	↓-17%	↓-8%	↓-14%	↓-19%	↓-6%	↓-11%	↓-11%	↓-5%	↓-14%	↓-10%	↓-15%
Number of Felony Delinquency Arrests												
	↓-13%	↓-10%	↓-5%	↓-12%	↓-16%	↓-2%	↓-9%	↓-6%	● 0%	↓-8%	↓-5%	↓-6%
Number of Misdemeanor Delinquency Arrests												
	↓-13%	↓-23%	↓-14%	↓-12%	↓-20%	↓-5%	↓-8%	↓-7%	↓-7%	↓-13%	↓-8%	↓-13%
Number of "Other" Delinquency Arrests												
	↓-8%	↓-12%	↑ 2%	↓-23%	↓-21%	↓-16%	↓-20%	↓-26%	↓-9%	↓-26%	↓-23%	↓-32%
Number of First-Time Misdemeanor Arrests (Impacted by Use of Civil Citation and Delinquency Dropping)												
	↓-16%	↓-25%	↓-20%	↓-16%	↓-28%	↓-6%	↓-13%	↓-21%	↓-20%	↓-45%	↓-17%	↓-24%
Number of School Arrests												
	↓-13%	↓-14%	↓-20%	↓-17%	↓-20%	↑ 2%	↓-14%	↑ 12%	↑ 14%	↑ 4%	↓-7%	↓-17%

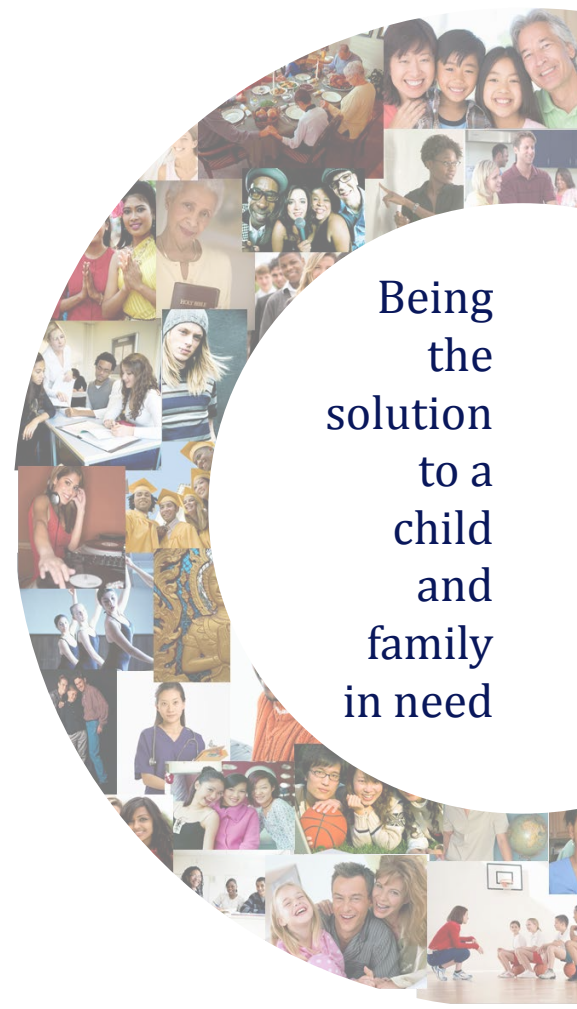
Youth Served Rank	Program Name	Total Slots	New Youth Admitted	Total Youth Served	Average Age
1	Pinellas	49	89	166	16
2	Leon	57	72	138	16
3	Alachua	36	67	121	16
	Volusia-Flagler	49	75	121	16
4	Lee	47	70	117	15
5	Marion	53	66	110	16
	Polk	42	62	110	15
6	Pasco	46	60	106	16
7	Hillsborough	47	60	105	17
8	Broward	76	53	101	16
9	Manatee	51	59	99	16
10	Escambia/Santa Rosa	52	58	94	16
11	Palm Beach	50	56	93	16
12	Jacksonville	79	37	92	16
	Treasure Coast	40	52	92	16
13	Orange	48	37	86	16
14	Collier at Immokalee	56	47	80	16

Race/Ethnicity of Total Girls Served by PACE



What's next?

- Prevention Assessment Tool
- Strengthening Education in DJJ Programs
- Expansion of what's working
 - Prevention
 - PACE
 - SNAP
 - EPICS
 - JPOs in schools
- Workforce partnerships
- Evening Reporting Centers
- Strengthening Family Support to Enhance Successful Re-entry
- Transitional housing
- Trauma Responsive Services Project
- Collaboration with state and national experts



Being
the
solution
to a
child
and
family
in need





FLORIDA DEPARTMENT OF JUVENILE JUSTICE

PART OF THE COMMUNITY, PART OF THE SOLUTION



Roadmap to System Excellence

House Judiciary Committee
February 11, 2015