



---

## **Health Quality Subcommittee**

**Tuesday, January 6, 2015  
4:30 PM - 6:30 PM  
306 HOB**

# Committee Meeting Notice

## HOUSE OF REPRESENTATIVES

### Health Quality Subcommittee

**Start Date and Time:** Tuesday, January 06, 2015 04:30 pm  
**End Date and Time:** Tuesday, January 06, 2015 06:30 pm  
**Location:** 306 HOB  
**Duration:** 2.00 hrs

Overview of the Department of Health  
Briefing on Ebola Preparedness by the Department of Health

**NOTICE FINALIZED on 12/19/2014 09:10 by Iseminger.Bobbye**

Overview of the  
Department of Health



---

*To protect, promote & improve the health of all people in Florida through integrated state, county, & community efforts*

**John H. Armstrong, MD, FACS**  
**Surgeon General & Secretary**

January 2015

# Vision

*To be the Healthiest State  
in the Nation*

# Values

- *Innovation*
- *Collaboration*
- *Accountability*
- *Responsiveness*
- *Excellence*



# By The Numbers

**Employees:** 17,190 statewide

## **Organization:**

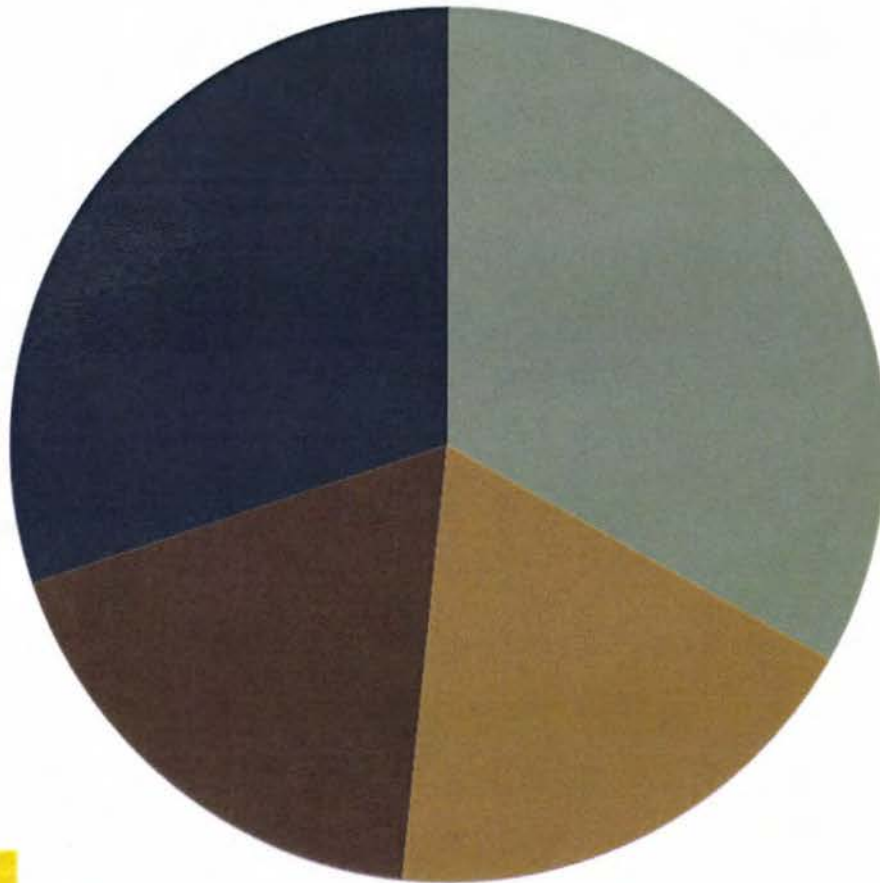
- State Health Office in Tallahassee—8 Divisions with statewide responsibilities
- 67 County Health Departments
- 20 Children’s Medical Service area offices
- 12 Medical Quality Assurance regional offices
- 9 Disability Determination area offices
- 4 Public Health Laboratories





# Budget

Budget: \$2.84 BILLION FY 2014-15



■ Federal Trust Funds  
33% \$942.0 M

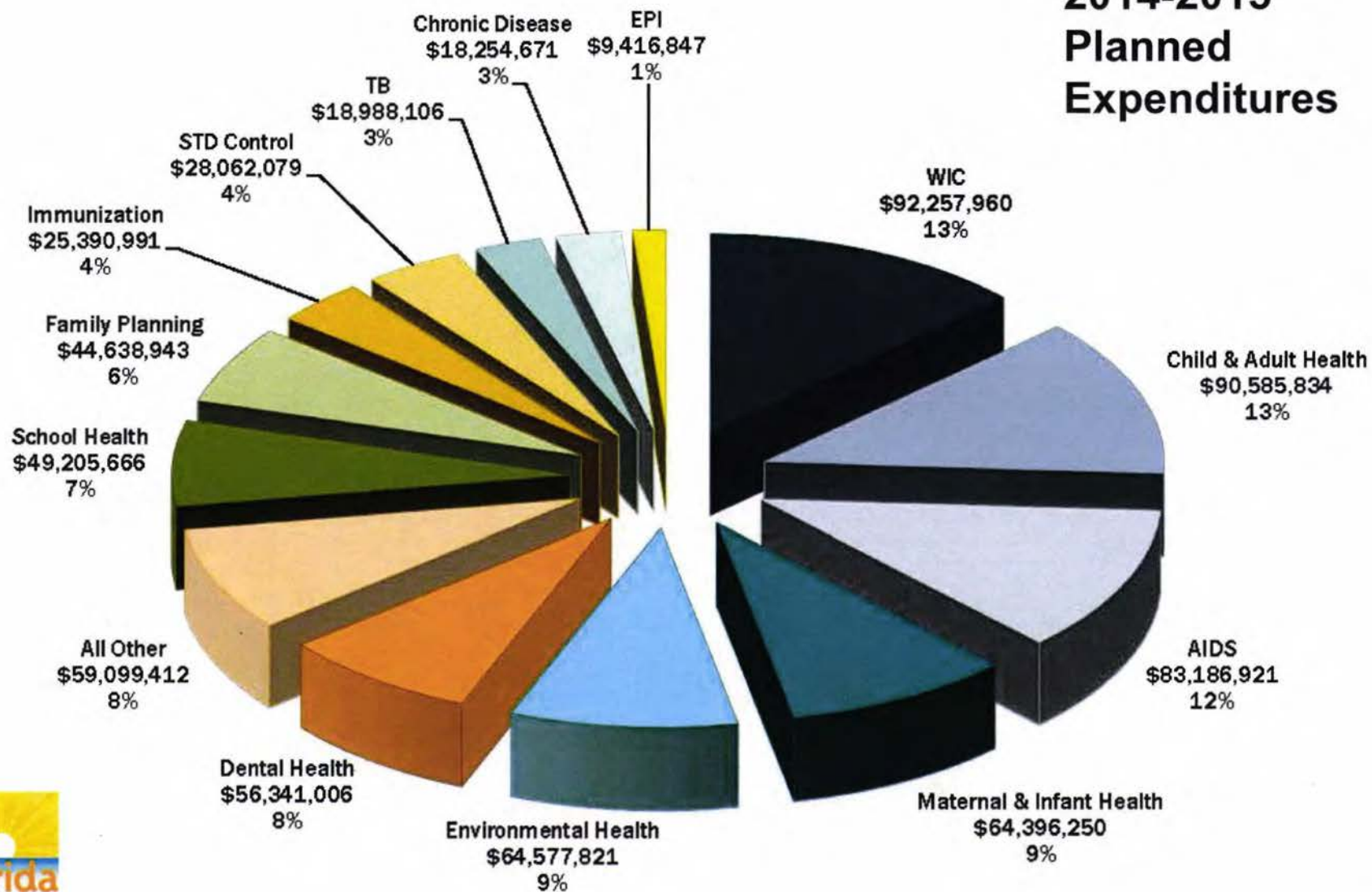
■ State Trust Funds  
18% \$524.8 M

■ General Revenue  
18% \$517.7 M

■ County Health  
Department Trust Fund  
30% \$856.9 M

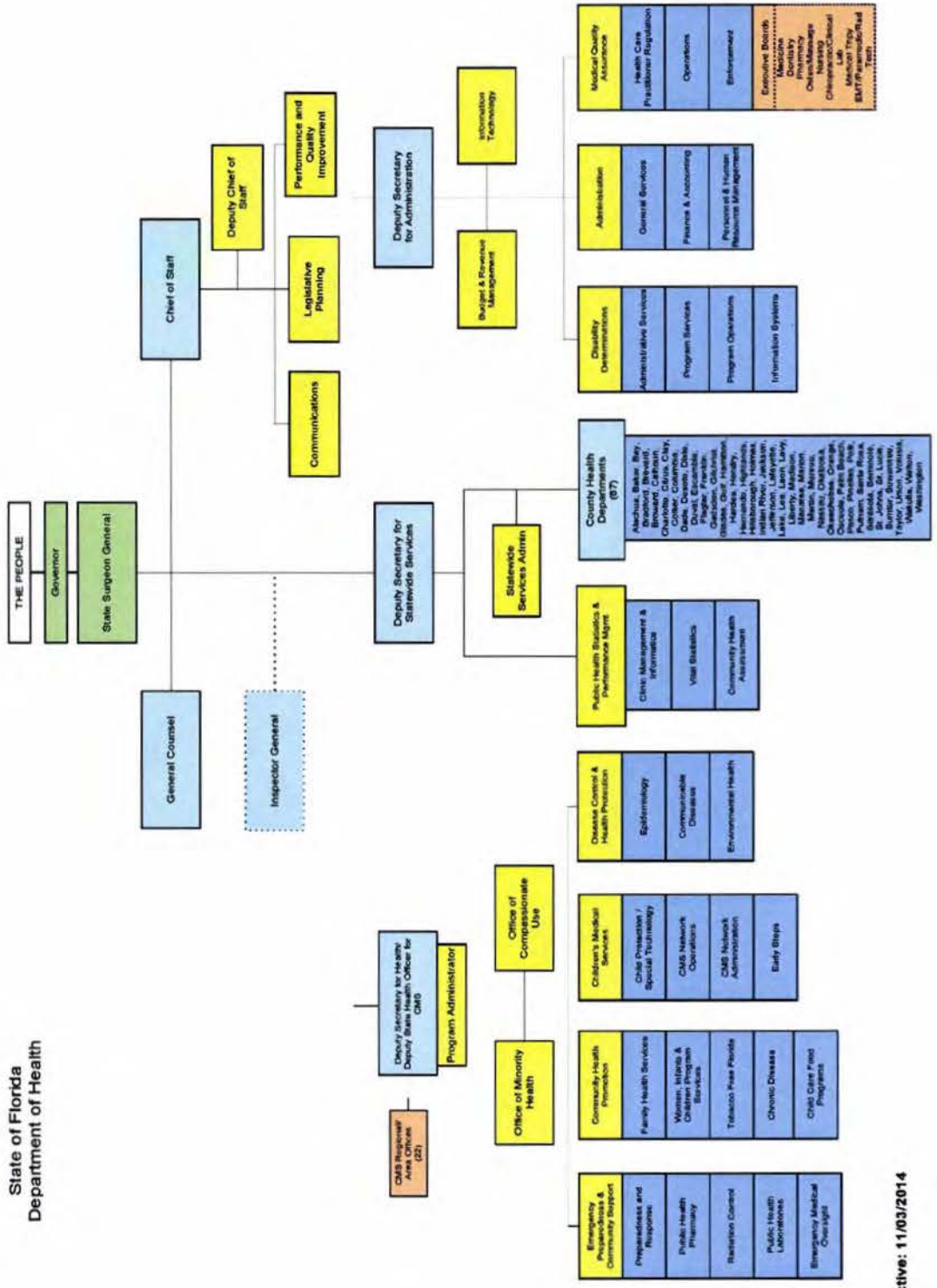
# County Health Departments

## 2014-2015 Planned Expenditures





# Organizational Chart



Effective: 11/03/2014

# Executive Leadership Team

**Kim Barnhill**  
*Chief of Staff*

**Dr. Celeste Philip**  
*Deputy Secretary for Health/Deputy State Health Officer*

**Paul Myers**  
*Deputy Secretary for Statewide Services*

**Marty Stubblefield**  
*Deputy Secretary for Administration*

**Jennifer Tschetter**  
*General Counsel*



# Disease Control & Health Protection

## Environmental Health

- Tests for safe food & water
- Examines onsite sewage systems
- Inspects safe facilities, including residential, migrant, healthcare, body art and tanning

## Epidemiology

- Surveillance of more than 100 reportable diseases
- Investigates outbreaks, injuries, and exposures
- Surveys health risks and provides consultations

## Communicable Diseases

- Targeted testing and education, disease investigation and reporting, & linkage to care
- Immunizations, HIV/AIDS, hepatitis, sexually transmitted diseases, & tuberculosis





# Community Health Promotion

## Tobacco Free Florida

- \$65 million in state funds
- \$2 million in federal funds
- Decreases in smoking estimated to save \$4.2 billion in health care

## Bureau of Child Care Food Programs

- Provides meals to 246,000 children per month in more than 6,400 child care facilities across Florida
- Funded by the U.S. Department of Agriculture Food and Nutrition Service



# Community Health Promotion

## Public Health Dental Program

- Promotes and administers oral health education, preventive dental programs through the County Health Departments (CHD)

## Healthiest Weight Florida

- Collaborates with state agencies, not-for-profit organizations, businesses, and entire communities to help Florida's children and adults make consistent, informed choices about healthy eating and active living
- 





# Community Health Promotion

## Chronic Disease Prevention

- Educate and implement social, policy and environmental changes that address risk factors
- Targeted programmatic areas include diabetes, heart disease, obesity, asthma and cancer screening

## WIC Program Services

- Provides nutritious foods to pregnant and breastfeeding women, new mothers, infants and children who are at nutrition risk and are at or below 185% of the Federal Poverty Level
  - Serves approximately 485,000 clients per month



# Community Health Promotion

## Biomedical Research

- Provides research grants to improve health through the:
  - James & Esther King Biomedical Research Program
  - William G. “Bill” Bankhead, Jr. and David Coley Cancer Research Program
  - Ed and Ethel Moore Alzheimer’s Disease Research Program
  - Florida Consortium of National Cancer Institute Centers Program
  - Direct appropriations for endowed research chairs and research centers

# Emergency Preparedness & Community Support

## **Bureau of Preparedness and Response**

- Provides all-hazards planning for potential catastrophic events, natural and man-made

## **Bureau of Emergency Medical Oversight**

- Ensures emergency medical services and trauma centers meet standards of care, and provide a system of care for traumatic brain/spinal cord injured survivors



# Emergency Preparedness & Community Support

## Bureau of Radiation Control

- Regulates and inspects radiation machines, laboratory testing of soil, water, and air samples for radiation detection and control

## Bureau of Public Health Pharmacy

- Supports pharmaceutical services provided by County Health Departments (CHD), including repackaging, dispensing, and the purchase and distribution of immunizations and other pharmaceuticals

# Children's Medical Services

## CMS Network

- Serves children with chronic and serious conditions who are enrolled in Medicaid, Kidcare or who have specialized unmet health care needs
  - 62,282 Title 19
  - 16,099 Title 21
  - 799 Safety Net



# Children's Medical Services

## CMS Early Steps

- Provides early intervention services to a child who has a developmental delay or is at risk of a developmental delay
  - FY 2013-2014: 43,788 enrolled
  - 27,265 served under an active Individualized Family Service Plan (IFSP)

## Child Protection Teams

- Provides medical, psychological, and other needed assessments to diagnose a history of child abuse or neglect
  - 29,980 children served in FY 2013-2014



# Children's Medical Services

## Newborn Screening

- Florida screens for all 31 disorders recommended by the United States HHS and an additional 22 secondary disorders, unless a parent objects in writing
  - 214,363 newborns screened of 215,770 live births in 2013
  - 461 newborns diagnosed with metabolic or other disorders,
  - 264 newborns diagnosed with hearing loss

# Public Health Statistics & Performance Management

## **[www.FloridaCHARTS.com](http://www.FloridaCHARTS.com)**

- Provides county by county analysis of health indicators
  - Injuries
  - Chronic diseases
  - Communicable diseases
  - Statistics on birth
  - Disease morbidity and mortality
  - Health risk behaviors
  - Socio-economic & health resources





# Medical Quality Assurance

- **BOARDS**

- Acupuncture
- Athletic Training
- Chiropractic Medicine
- Clinical Laboratory Personnel
- Clinical Social Work, Marriage and Family Therapy, and Mental Health Counseling
- Dentistry
- Hearing Aid Specialists
- Massage Therapy
- Medicine
- Nursing
- Nursing Home Administrators
- Occupational Therapy
- Opticianry
- Optometry
- Orthotists and Prosthetists
- Osteopathic Medicine
- Pharmacy
- Physical Therapy Practice
- Podiatric Medicine
- Psychology
- Respiratory Care
- Speech-Language Pathology and Audiology

- **COUNCILS**

- Certified Nursing Assistants
- Dietetics and Nutrition Practice
- Electrolysis
- Licensed Midwifery
- Medical Physicists
- Physician Assistants

- **DEPARTMENT REGULATED PROFESSIONS**

- Dental Laboratories
- Certified Master Social Worker
- Office Surgery Centers
- Optical Establishments
- Pain Management Clinics
- School Psychologists

# Medical Quality Assurance

## Prosecution Services Unit (PSU)

- Responsible for providing legal services in the regulation of all health care boards and councils

## Health Care Practitioner Regulation

- Licensing more than 1.1 million practitioners

## Enforcement

- Action may be taken against health care practitioners is administrative in nature (e.g., reprimand, fine, restriction of practice, administrative cost, probation, license suspension or license revocation).
-



# Disability Determination

- Determines medical eligibility of Floridians applying for disability benefits under Title II and Title XVI of the Social Security Act, and the state Medically Needy program
- Conducts reviews of existing beneficiaries under federal programs to determine continued eligibility for benefits
  - 1,060,740 Floridians receive almost \$11 billion in federal disability benefits

# Offices

## Office of Minority Health

- Works to improve health and health care outcomes for racial and ethnic minority communities
- Seeks to eliminate health disparities as they relate to groups impacted by disability, gender, age, socio-economic status, mental/behavioral health problems and sexual orientation

# Offices

## Office of Compassionate Use

- Regulate liquid derivatives of cannabis
- Facilitates green to investigational new drugs

# Offices

## Office of Information Technology

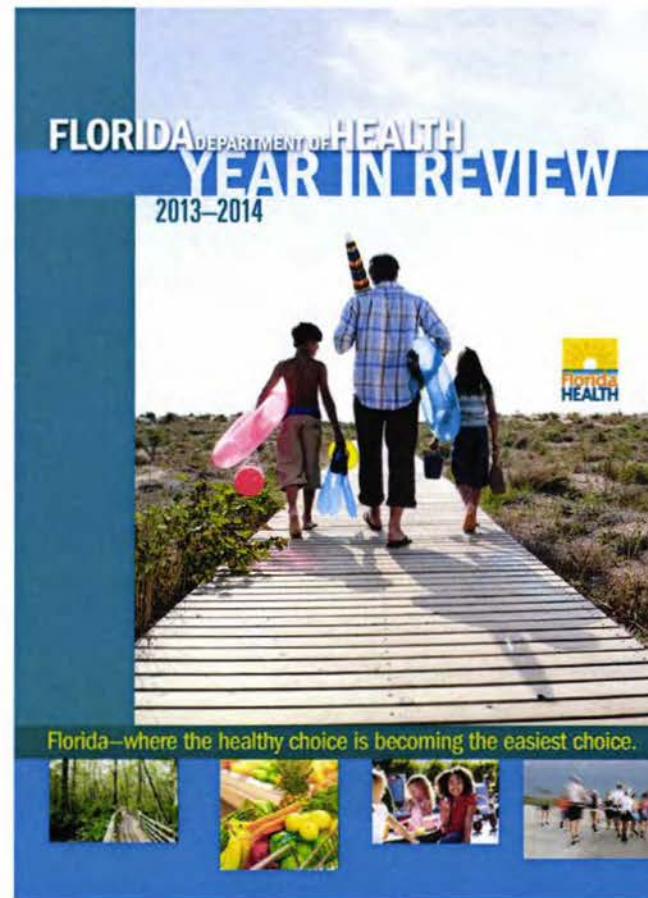
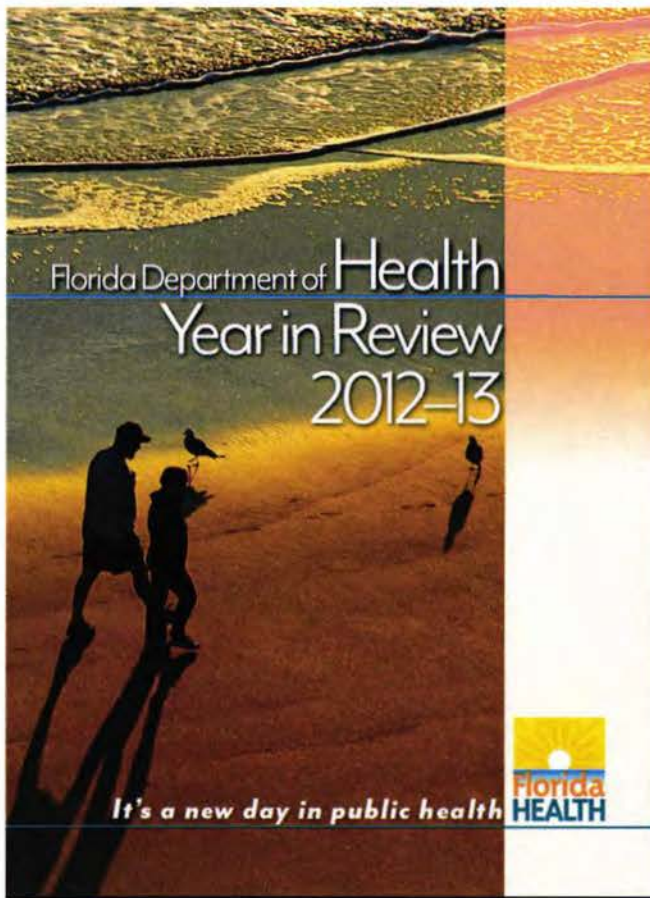
- Supports network between Central Office and 67 CHDs
- Maintains secure database

## Budget & Revenue Management

- Provides oversight of all budget and finance



# Year in Review



# Initiatives

- Healthiest Weight



- Public Health Accreditation



- 125 Years of Florida Public Health



**Briefing on Ebola  
Preparedness**



# **Ebola Virus Disease (EVD)**

John H. Armstrong, MD, FACS

Surgeon General & Secretary

Celeste M. Philip, MD, MPH

Deputy Secretary for Health and Deputy State Health Officer for Children's Medical Services

January 6, 2015

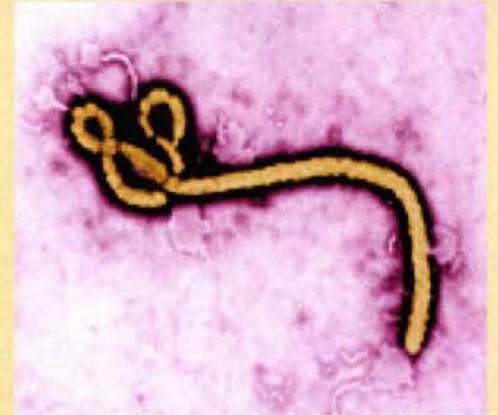






# Ebola virus

- Discovered in 1976 near Ebola River in central Africa
- Outbreaks occur sporadically in Africa
- 2014: first Ebola epidemic, 50% mortality





# Who

- Travel to Guinea, Liberia, Mali or Sierra Leone within past 3 weeks
- Contact with someone infected and symptomatic with Ebola





# How

- Direct contact with Ebola secretions
  - Saliva
  - Sweat
  - Vomit
  - Diarrhea
  - Blood
  - Urine
  - Contaminated materials (e.g., needles & syringes)
- Through broken skin or mucous membranes  
(Eyes, nose, mouth)



# Symptoms

- Abrupt fever
- Severe headache & muscles pains
- Vomiting & diarrhea
- Abdominal pain
- Unexplained hemorrhage





# Detection

- Incubation period (no symptoms) = 2 to 21 days
- Average range for symptoms to appear = 8 to 10 days
- Person infected with Ebola virus not contagious until symptoms appear



# Screening

- County Health Departments screen per CDC guidelines
  - Travel in Guinea, Liberia, Mali or Sierra Leone within past 3 weeks and/or
  - Contact with someone symptomatic with Ebola and
  - Fever and other symptoms





# Testing

- Only for positive risk screen, requires consultation with state epidemiologist & CDC
- Initial test at Miami, Jacksonville & Tampa labs, confirmatory testing by CDC
  - State lab turnaround time is 6 hours to provide an Ebola test result



# Testing

- Negative result: confirmatory, no need for state lab to send to CDC
- Positive result : preliminary, must be confirmed by CDC
  - CDC turnaround time is 48 hours





# Treatment

- Supportive care with fluids & electrolytes
- Strict isolation protocols
- Experimental treatments may be available
- No vaccine currently



# Florida Responds

- Protect the health of Florida's children, adults, families & visitors
- Ensure safety for Florida's health professionals
- Collaborate with state agencies, hospitals, emergency medical services, public safety, emergency managers & health professionals





# Florida Responds

## Across health care system

- **Identify** patient at risk for Ebola
- **Isolate** patient for screening and/or testing
- **Inform** local Department of Health (CHDs)



# Florida Responds

- Personal protective equipment (PPE) & training videos for first responders and health care professionals
- First responder and hospital support packages for rapid response
- Plan & drill with hospitals & other partners





# Florida Responds

- \$1.9 million disbursed to CHDs for equipment purchase & training
- 24 Hospital Support Packages regionally deployed within the state, received within 3 hours
- 15 First Responder Support Packages can be received within 1 hour



# Florida Responds

- No PPE has been provided by the federal government
- DOH has made requests to the federal government to provide additional testing kits & to conduct Ebola screening at Florida airports: unfulfilled





# Florida Responds

- Florida hospitals asked to establish mandatory Ebola training programs to protect healthcare professionals
- 162 of 210 hospitals from every region of the state have completed training programs to protect healthcare professionals (as of December 22, 2014)





# Florida Responds

- Governor's Executive Order 14-280  
(October 25, 2014)
- Track & monitor for 21 days individuals returning to U.S. from affected countries
  - To date, 100 individuals have been monitored in Florida
  - 45 individuals currently being monitored (as of December 22, 2014)



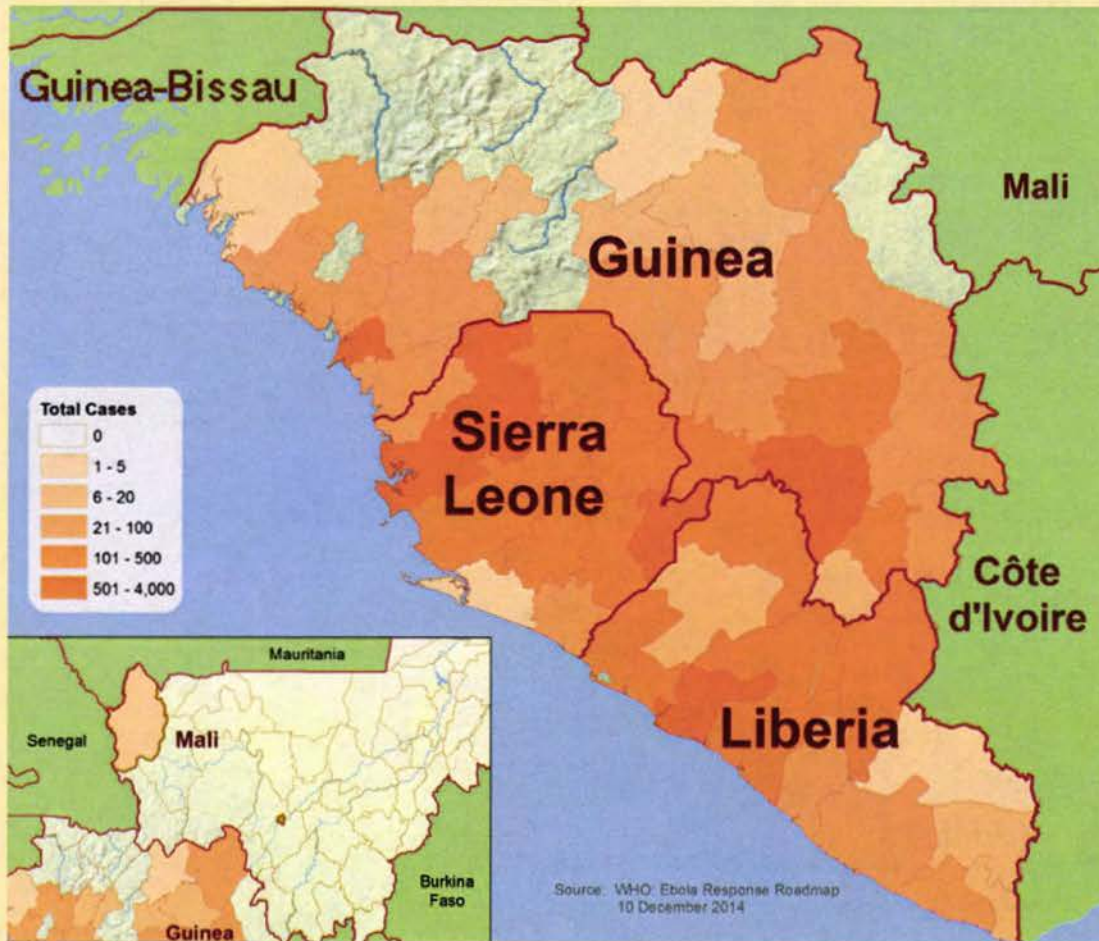
# Florida Responds

- Joint Information Center (JIC) established to coordinate communication to the public:
  - DOH
  - AHCA
  - FDEM
  - DOT
  - FDLE
  - DCF
  - DEP
- JIC produced 25 News Releases (as of December 22, 2014)





# Ebola in Africa



- Started March 2014
- Spread to 6 countries
  - Nigeria (20) & Senegal (1) stopped Ebola
  - Remains intense in Guinea, Liberia, Sierra Leone
  - New in Mali (8)
  - U.S. (4) & Spain (1)
- > 19,065 cases
- > 7,388 deaths





# Ebola in US

- Transfers from West African countries
  - 4 at Emory, 4 recovered
  - 3 at Nebraska, 2 recovered, 1 death
- Ebola in Dallas & NYC
  - Dallas: Liberian patient died Oct 8
    - 2 nurses at Dallas hospital with Ebola, Oct 11 & 15
      - Both discharged
  - NYC: physician back from Guinea, diagnosed Oct 23, recovered Nov 11



# Summary

- No case of Ebola in Florida
- Ebola risk comes from direct contact with an infected individual who is symptomatic
- Florida's public health system is prepared & ready to respond





# Precautions

- Stay informed at [www.FloridaHealth.gov](http://www.FloridaHealth.gov) & [www.cdc.gov](http://www.cdc.gov)
- Avoid travel to countries at risk
- Be prepared for flu season
  - Get your flu shot
  - Wash your hands frequently, avoid touching your face
  - Stay home when you are sick